



## **RUSSELL SIMPSON**

A recently refurbished and well  
proportioned three bedroom  
apartment

MONTROSE COURT  
SOUTH KENSINGTON SW7

# Montrose Court

# Let

BEDROOMS 3-3	INTERNAL 1,150 SQ FT	OUTDOOR —	FURNISHED STATUS Furnished
BATHROOMS 2-2	106 SQM	EPC D	COUNCIL TAX —



## The Property

On the ground floor of this secure and well located portered apartment block situated close to Hyde Park. Montrose Court is situated at the northern end of Princes Gate.





## The Bedrooms





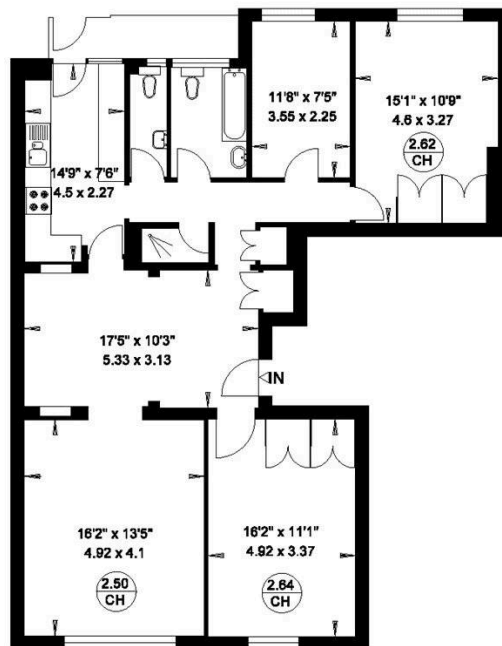
## The Neighbourhood

The property is well placed for shops, museums and public transport facilities of South Kensington



**25 MONTROSE COURT  
LONDON SW7**

**Gross Internal Area = 106 sq. metres  
1150 sq. feet**



**GROUND FLOOR**

**RUSSELL  
SIMPSON**

---

## Contact Us

+44 (0) 20 7225 0277

Contact us

[info@russellsimpson.co.uk](mailto:info@russellsimpson.co.uk)

---

## Sydney Street

+44 (0) 20 7225 0277

151A Sydney Street

London

SW3 6NT

[chelsea@russellsimpson.co.uk](mailto:chelsea@russellsimpson.co.uk)

---

## Kensington Square

+44 (0) 20 3761 9691

13 Kensington Square

London

W8 5HD

[kensington@russellsimpson.co.uk](mailto:kensington@russellsimpson.co.uk)