



RUSSELL SIMPSON

Spacious three-bedroom flat in a portered building moments away from Hyde Park

MONTROSE COURT
SOUTH KENSINGTON SW7

Montrose Court

£1,500 _{P/W}

<div>BEDROOMS</div> <div>3-3</div>	<div>INTERNAL</div> <div>1,150 _{SQ FT}</div> <div>106 _{SQM}</div>	<div>OUTDOOR</div> <div>—</div>	<div>FURNISHED STATUS</div> <div>Unfurnished</div>
<div>BATHROOMS</div> <div>2-2</div>		<div>EPC</div> <div>C</div>	<div>COUNCIL TAX</div> <div>Westminster City, G</div>



The Property

Bright flat with contemporary interiors on a sought-after street in South Kensington

Stepping into the flat on the first floor, the entrance hall flows through to a generous reception room with a west-facing window that fills the interior with afternoon light. Next door is a convenient fitted kitchen, while the hallway contains considerable storage space.

The flat also offers three bedrooms. One of them has an ensuite bathroom and a separate sun room, while the other two bedrooms share a bathroom with a bath.

The property is presented in good condition. Its wooden floors and contemporary finish make for a sophisticated design.

Montrose Court is an impressive building with lift and 24-hour porter. It is situated at the northern end of the prestigious Prince's Court.



img 1	Living Room
img 2	Living Room

The Neighbourhood

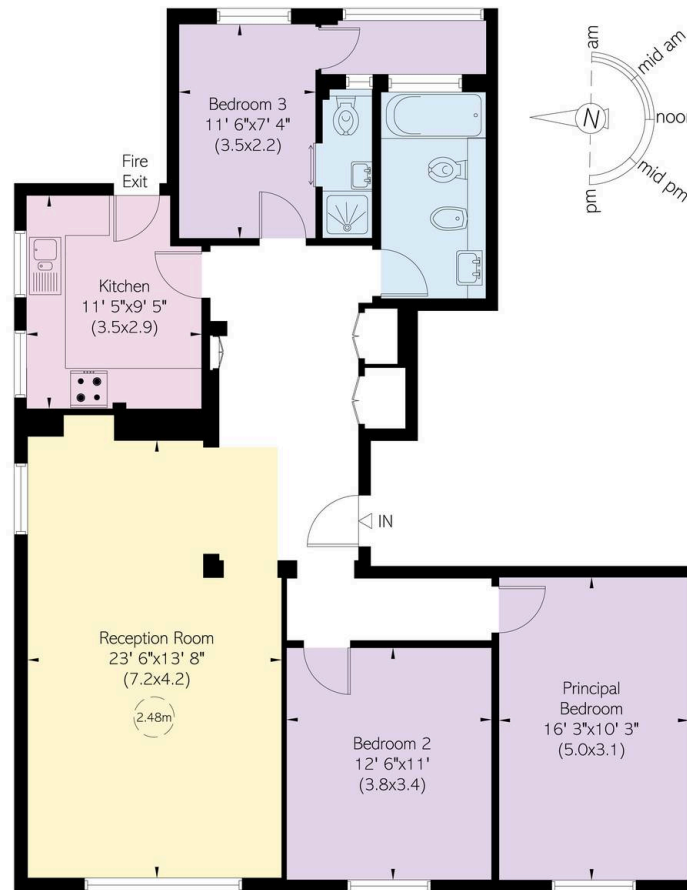
Montrose Court is located in the heart of South Kensington's cultural centre, surrounded by world-class museums, universities and performance venues. In addition, the open spaces of Hyde Park and South Kensington are a few moments' walk away. Finally, South Kensington underground station is within easy reach.

Montrose Court, Princes Gate, SW7

**RUSSELL
SIMPSON**

Approximate Internal Area
1,150 sq ft/ 107 sq m

This plan is for layout guidance only. Not drawn to scale unless stated. Windows and door openings are approximate. Whilst every care is taken in the preparation of this plan, please check all dimensions, shapes, and compass bearings before making any decisions reliant upon them.



First Floor

**RUSSELL
SIMPSON**

Contact Us

+44 (0) 20 7225 0277

151A Sydney Street
London
SW3 6NT

chelsea@russellsimpson.co.uk

In accordance with the Property Mis-Description Act 1991, the following details have been prepared in good faith, and are not intended to constitute part of an offer or contract. Any information contained herein (whether in the text, plans or photographs) is given in good faith but should not be relied upon as being a statement of representation of fact. Nothing in these Particulars shall be deemed to be a statement that the property is in good condition or otherwise nor that any services or facilities are in good working order. Any measurements of distances referred to herein are approximate only. October 2021