



RUSSELL SIMPSON

Elegant two-bedroom apartment in a
distinguished Edwardian building

MONTAGU MANSIONS
MARYLEBONE W1U

Montagu Mansions

£7,500 P/M

<div>BEDROOMS</div> <div>2</div>	<div>INTERNAL</div> <div>1,119 <small>SQ FT</small></div> <div>103 <small>SQM</small></div>	<div>OUTDOOR</div> <div>72 <small>SQ FT</small></div>	<div>FURNISHED STATUS</div> <div>Furnished</div>
<div>BATHROOMS</div> <div>2</div>		<div>EPC</div> <div>E</div>	<div>COUNCIL TAX</div> <div>Westminster City, F</div>

The Property

A beautifully presented flat with sophisticated interiors.

Entering the flat to a spacious reception hall, the reception room to the left features high ceilings and large windows that fill the space with light. The room is decorated in a contemporary style with neutral tones and flows through to the dining room and then on to the modern kitchen fitted with glossy beige units, marble-effect countertops and integrated appliances including wine storage. A mirrored backsplash adds to the sense of space.

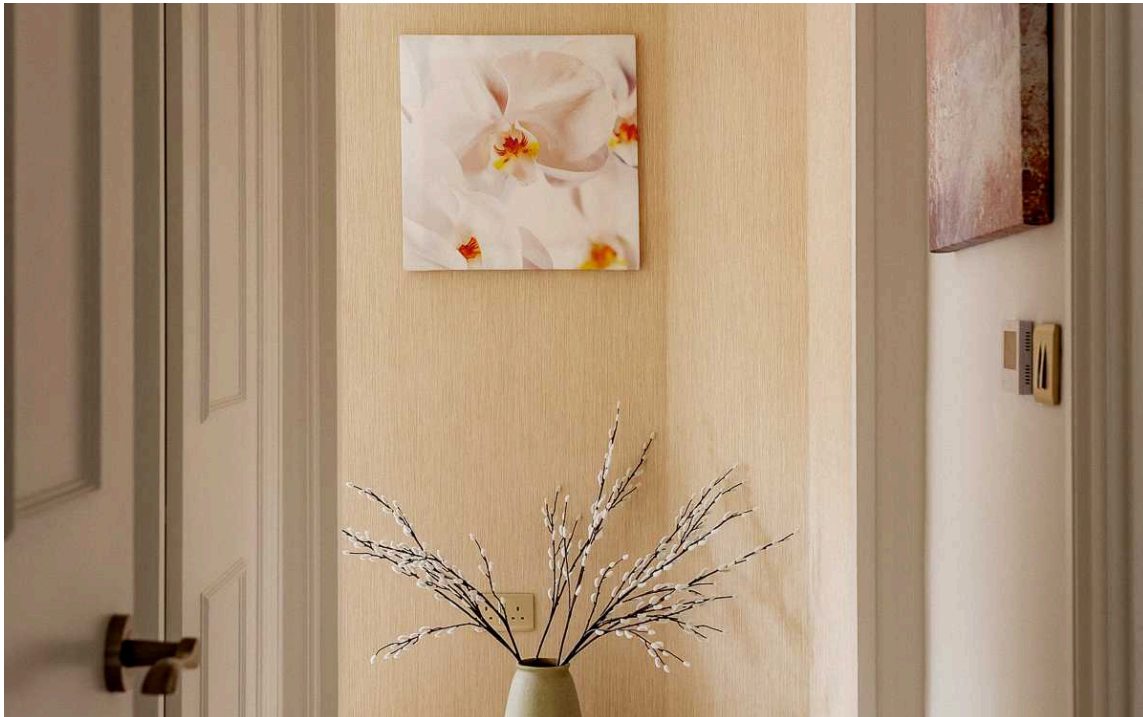




The Bedrooms

The two bedrooms offer fitted wardrobes and benefit from excellent natural light through large windows. The ensuite bathroom for the principal bedroom features modern fittings with stone-effect tiling and both bath and shower facilities, finished with brass-toned fixtures. A second bathroom with shower finishes this flat.

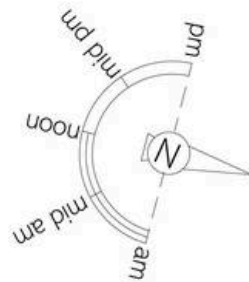
Throughout, the flat benefits from wooden floors and refined contemporary interiors that maximise the sense of light and space, and four small balconies.





The Neighbourhood

Montagu Mansions is situated moments away from the open spaces of Regent's Park and within easy reach of Marylebone's upmarket boutiques and restaurants. The area offers excellent transport connections with Baker Street and Marylebone stations nearby, providing swift access to the West End and across London. The distinguished Edwardian building adds to the property's elegant offering in this sought-after location.



Montagu Mansions, W1

**RUSSELL
SIMPSON**

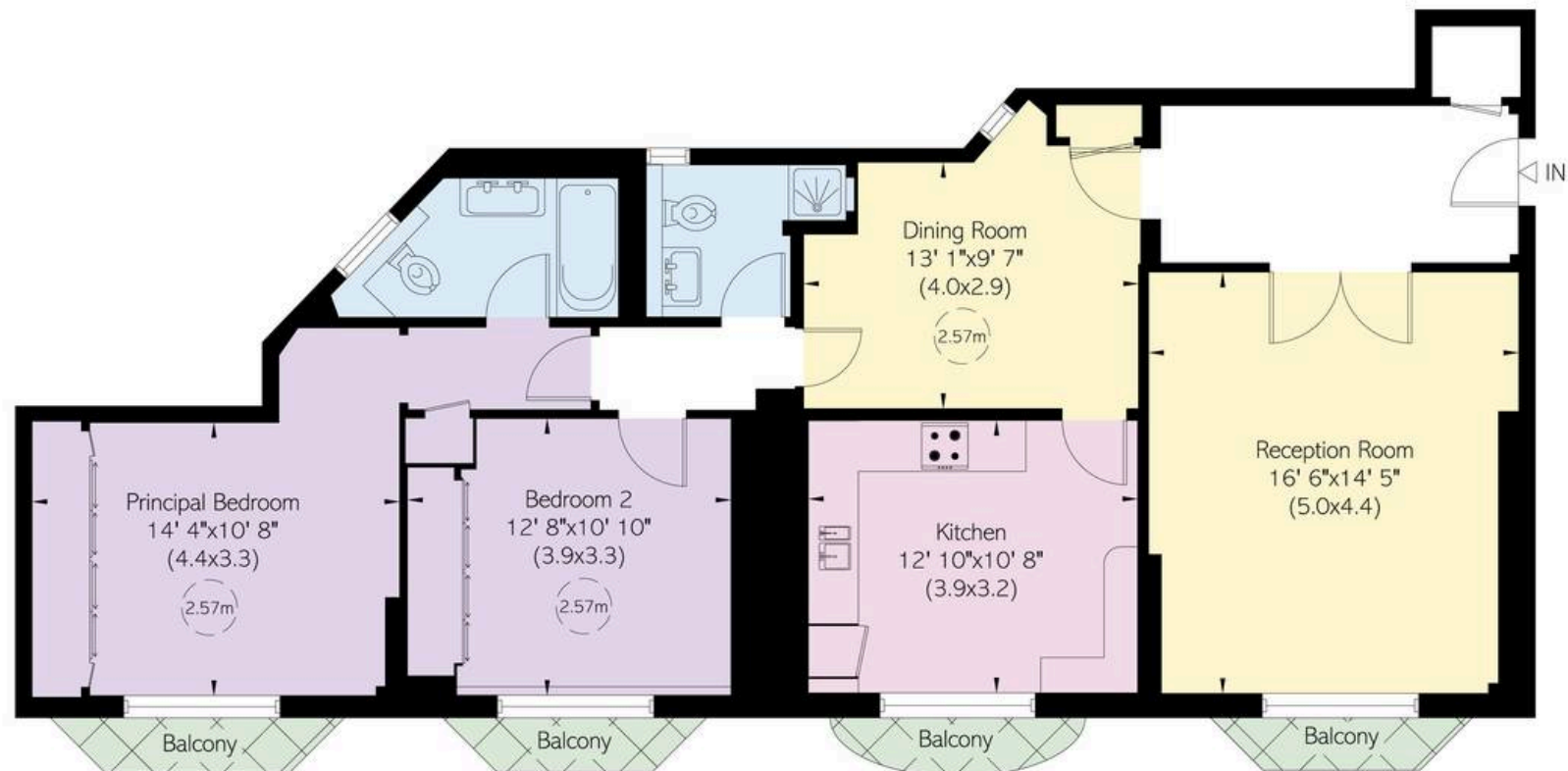
Approximate Internal Area

1,119 sq ft/ 104 sq m

Outside Area

72 sq ft/ 7 sq m

This plan is for layout guidance only. Not drawn to scale unless stated. Windows and door openings are approximate. Whilst every care is taken in the preparation of this plan, please check all dimensions, shapes, and compass bearings before making any decisions reliant upon them.



Fourth Floor

**RUSSELL
SIMPSON**

Contact Us

+44 (0) 20 3761 9691

mayfair@russellsimpson.co.uk

In accordance with the Property Mis-Description Act 1991, the following details have been prepared in good faith, and are not intended to constitute part of an offer or contract. Any information contained herein (whether in the text, plans or photographs) is given in good faith but should not be relied upon as being a statement of representation of fact. Nothing in these Particulars shall be deemed to be a statement that the property is in good condition or otherwise nor that any services or facilities are in good working order. Any measurements of distances referred to herein are approximate only. October 2021