



## **RUSSELL SIMPSON**

Beautiful three bedroom flat  
moments away from South  
Kensington station to rent

MALVERN COURT  
SOUTH KENSINGTON SW7

# Malvern Court

# Let

BEDROOMS 3	INTERNAL 1,143 SQ FT	OUTDOOR —	FURNISHED STATUS Part Furnished
BATHROOMS 2	106 SQM	EPC E	COUNCIL TAX RBKC, G



## The Property

Spacious flat with an impressive reception room in a popular Art Deco apartment building

This seventh-floor flat centres on a large reception room with wide windows. As well as wooden floors and a pair of ornamental fireplaces, this room has enough space for separate dining and seating areas.



## Indoor Spaces

The flat is decorated in a contemporary style with considerable storage space. It is presented in good condition.

In addition, this side of the flat contains a principal bedroom with an ensuite bathroom. Next door is a second bedroom, while the third can be found at the opposite end of the flat with a bathroom next door. In addition, there is a fitted kitchen with modern appliances and enough space for an informal breakfast area.





## The Neighbourhood

Malvern Court is a sought-after Art Deco apartment building with a porter and lift.

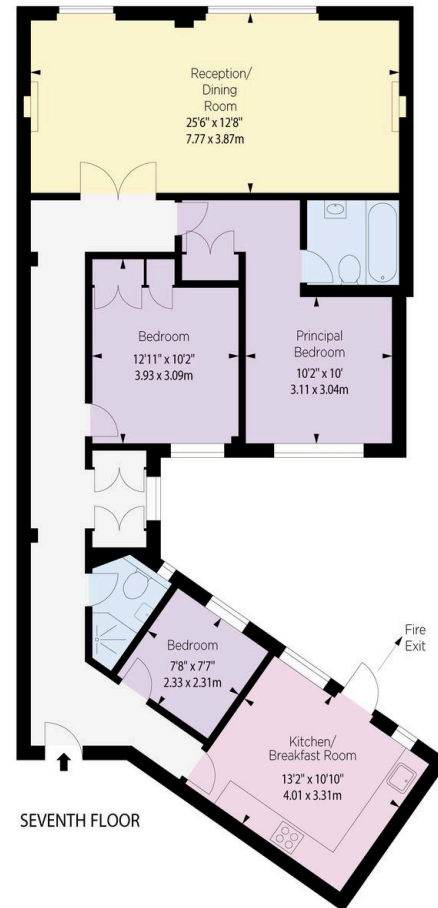
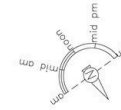
The property is ideally located. South Kensington underground station is close, while the world-class cultural facilities of the Museum District are also nearby. In addition, the many restaurants and shops of the King's Road and the Fulham Road are within easy reach.

# Malvern Court, Onslow Square, SW7

Approximate Gross Internal area  
1143 Ft<sup>2</sup> / 106.18 M<sup>2</sup>

**RUSSELL  
SIMPSON**

This plan is for layout guidance only.  
Not drawn to scale unless stated. Windows  
and door openings are approximate. Whilst  
every care is taken in the preparation of this  
plan, please check all dimensions, shapes,  
and compass bearings before making any  
decisions reliant upon them.



ALEX WINSHIP

**RUSSELL  
SIMPSON**

---

## Contact Us

+44 (0) 20 7225 0277

151A Sydney Street  
London  
SW3 6NT

[chelsea@russellsimpson.co.uk](mailto:chelsea@russellsimpson.co.uk)