



RUSSELL SIMPSON

Beautiful flat with spacious layout in
the heart of Old Chelsea to rent

LAWRENCE MANSIONS
CHELSEA SW3

Lawrence Mansions

£800 P/W

BEDROOMS 2	INTERNAL 797 <small>SQ FT</small>	OUTDOOR —	FURNISHED STATUS Unfurnished
BATHROOMS 2	74 <small>SQM</small>	EPC C	COUNCIL TAX RBKC, G



The Property

Two bedroom flat in an impressive mansion block close to Albert Bridge and the Thames

Entering the flat on the second floor, the entrance hall leads through to a generous reception room. As well as an open-plan kitchen and separate dining and seating areas, this room includes south-east facing sash windows bringing in added brightness.



The Bedrooms

The property is available in good condition with wooden floors throughout.

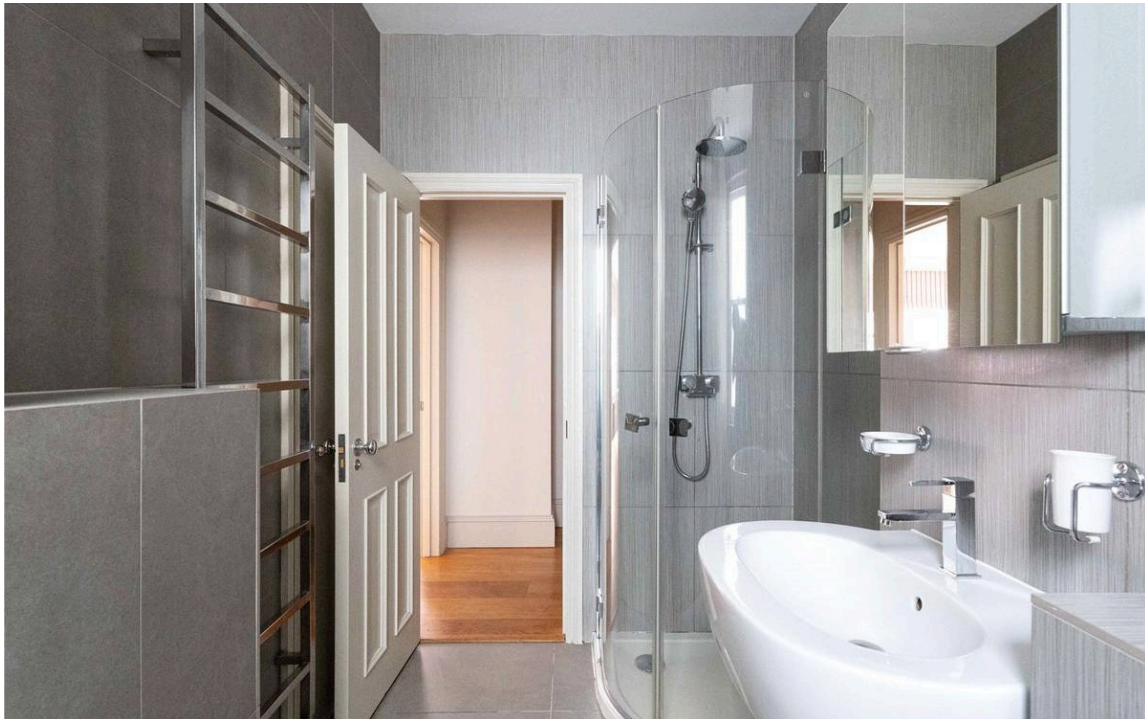
On one side of the reception room is a principal bedroom with ensuite bathroom. On the other side is a second bedroom, this one with a bay window and a bathroom opposite.

img 1

Double Bedroom

img 2

Bathroom





The Neighbourhood

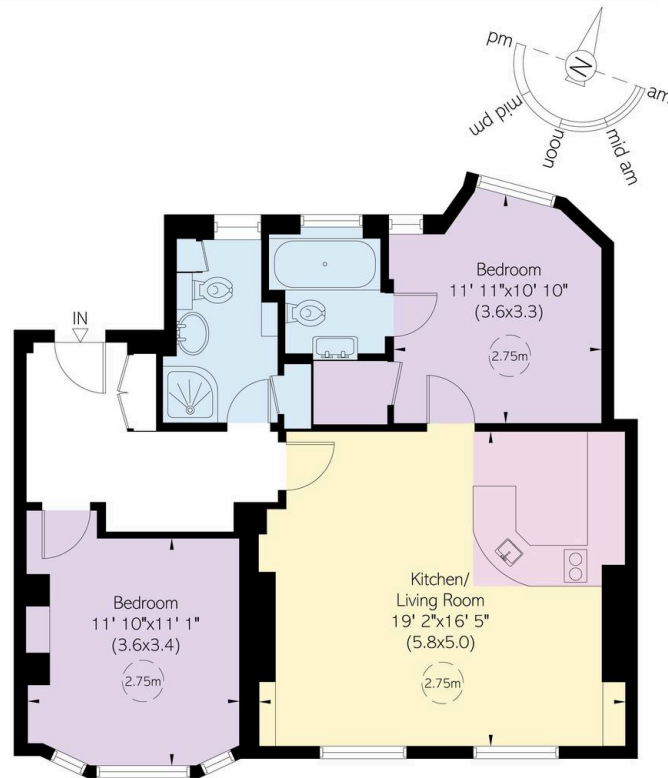
Lordship Place is a quiet road connecting Lawrence Street with the historic Cheyne Row. The neighbourhood contains several red-brick mansion blocks, as well as the beautiful Georgian houses of Old Chelsea. To the south, the Thames embankment and the Albert Bridge are a few minutes away, leading to the open spaces of Battersea Park. To the north, the restaurants and shops of the King's Road are all within easy reach. Finally, Sloane Square and Imperial Wharf stations are both a short bus ride away.

Lawrence Mansions, Lordship Place, SW3

**RUSSELL
SIMPSON**

Approximate Internal Area
797 sq ft / 74 sq m

This plan is for layout guidance only. Not drawn to scale unless stated. Windows and door openings are approximate. Whilst every care is taken in the preparation of this plan, please check all dimensions, shapes, and compass bearings before making any decisions reliant upon them.



Second Floor

**RUSSELL
SIMPSON**

Contact Us

+44 (0) 20 7225 0277

151A Sydney Street
London
SW3 6NT

chelsea@russellsimpson.co.uk