



RUSSELL SIMPSON

Convenient one-bedroom flat with
pool, spa and gym access near
Kensington High Street to rent

LANCER SQUARE
KENSINGTON W8

Lancer Square

£1,700 P/W

BEDROOMS 1	INTERNAL 737 <small>SQ FT</small>	OUTDOOR —	FURNISHED STATUS Furnished
BATHROOMS 1	68 <small>SQM</small>	EPC B	COUNCIL TAX RBKC, G

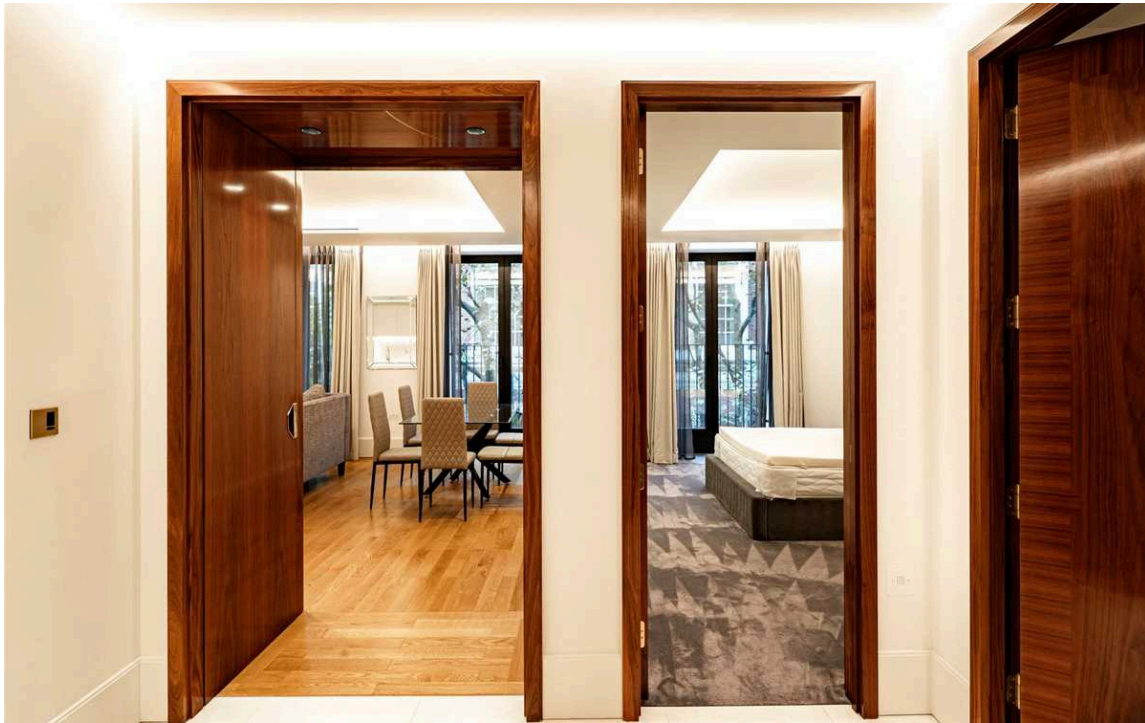


The Property

Contemporary flat in an exquisite modern development moments away from Kensington Gardens

Stepping into the flat on the second floor, the front hall leads through to a generous reception room. This includes an open-plan kitchen with fitted units and a breakfast bar, as well as separate dining and seating areas. Furthermore, a pair of double French doors open onto Juliet balconies, while wooden floors add to the sense of brightness and space.

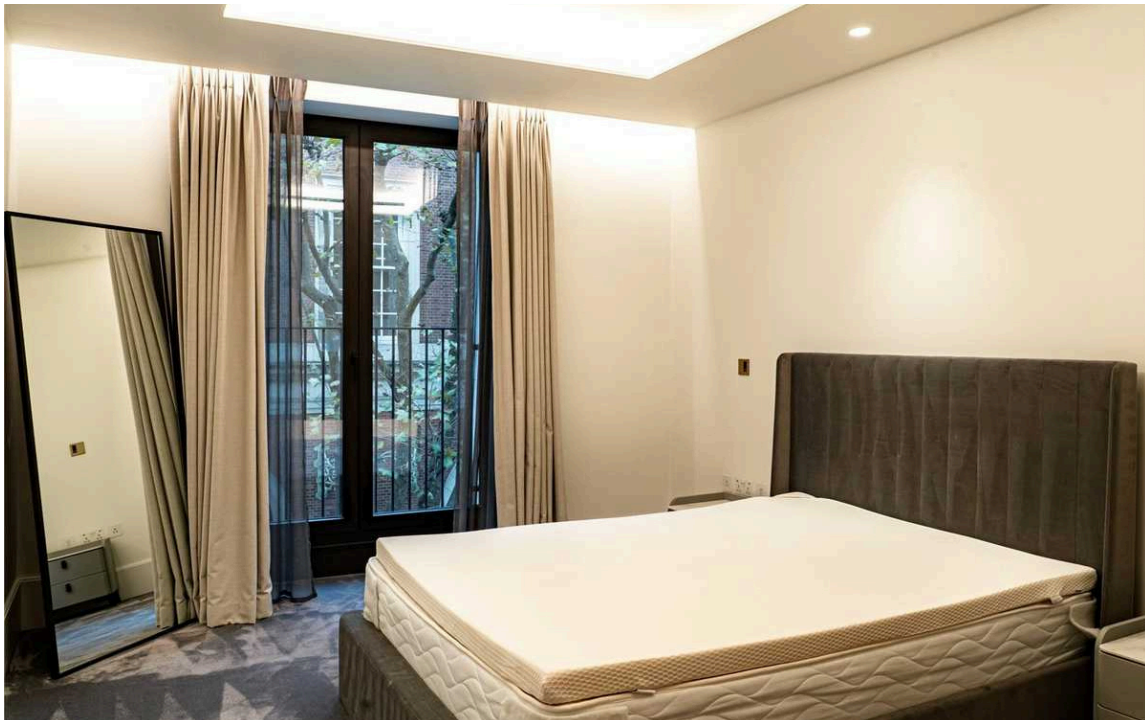




Indoor Spaces

The stylish contemporary interiors are presented in excellent condition, offering air conditioning and underfloor heating throughout.

This flat also contains a bedroom with its own Juliet balcony and a bathroom next door.



The Neighbourhood

Lancer Square is a recent development providing fantastic facilities to its residents. These include a 24-hour concierge service, a gym and treatment rooms, and a private spa and pool. There is also a lift to all floors, an elegant lobby and a tasteful communal garden.

Lancer Square is exceptionally well-located in the heart of Kensington. From here, the restaurants, shops and underground station of Kensington High Street are close. In addition, the open spaces of Kensington Gardens and Hyde Park are within easy reach.



One Lancer Square, W8

**RUSSELL
SIMPSON**

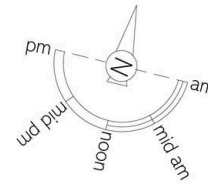
Approximate Internal Area

737 sq ft/ 68 sq m

Outside Area

18 sq ft/ 2 sq m

This plan is for layout guidance only. Not drawn to scale unless stated. Windows and door openings are approximate. Whilst every care is taken in the preparation of this plan, please check all dimensions, shapes, and compass bearings before making any decisions reliant upon them.



**RUSSELL
SIMPSON**

Contact Us

+44 (0) 20 3761 9691

13 Kensington Square
London
W8 5HD

kensington@russellsimpson.co.uk