



## **RUSSELL SIMPSON**

Exceptional duplex flat with superb facilities to rent in Knightsbridge's most luxurious development

KNIGHTSBRIDGE  
KNIGHTSBRIDGE SW1X

Knightsbridge

£4,250 <sub>P/W</sub>

|                |  |              |                               |
|----------------|--|--------------|-------------------------------|
| BEDROOMS<br>1  | INTERNAL<br><br>1,621 <sub>SQ FT</sub><br><br>150 <sub>SQM</sub> | OUTDOOR<br>— | FURNISHED STATUS<br>Furnished |
| BATHROOMS<br>2 |  | EPC<br>B     | COUNCIL TAX<br>—              |



## The Property

Sublime one bedroom flat in celebrated Candy Brothers building with access to pool, cinema, parking and 24-hour concierge service



## Indoor Spaces

Entering the flat on the second floor, the hallway leads through to a generous reception room. This includes an open-plan kitchen with breakfast bar, as well as separate dining and seating areas. South-west facing floor-to-ceiling windows offer impressive views and ensure the room is filled with light.





## The Bedroom

Downstairs, the first floor is entirely occupied by the bedroom suite. This includes a bathroom with a bath, a spacious bedroom with floor-to-ceiling windows, and considerable storage space.

## The Design

The interiors mix contemporary and traditional styles and are finished to the highest level. With a blend of leathers, metals and natural material, the result is a polished and sophisticated aesthetic.

One Hyde Park is one of the London's most luxurious developments. The building offers a lift, 24-hour concierge service, parking and chauffeur-driven car, and room service from the neighbouring Mandarin Oriental hotel. In addition, residents have access to a private cinema, a pool, a jacuzzi, a sauna and spa, a gym and squash court, and a business suite.



## The Neighbourhood

The property is superbly located. On one side you have the open spaces of Hyde Park and Kensington Gardens. On the other side you have the world-class shops and restaurants of Knightsbridge. The underground station is a few moments away, while the prestigious Mandarin Oriental Hotel is next door.



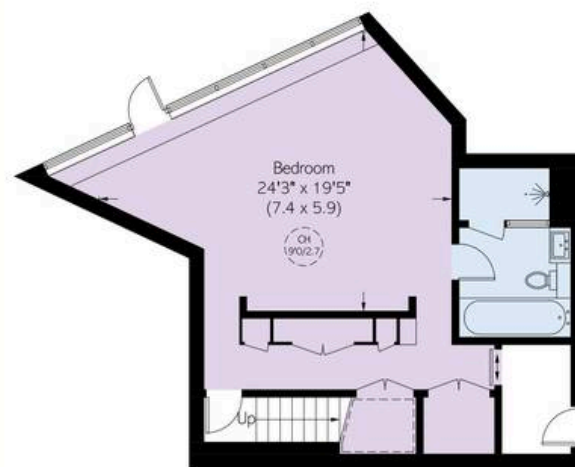
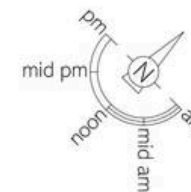
# One Hyde Park SW1X

**Approximate area**  
150.6 sq m / 1621 sq ft

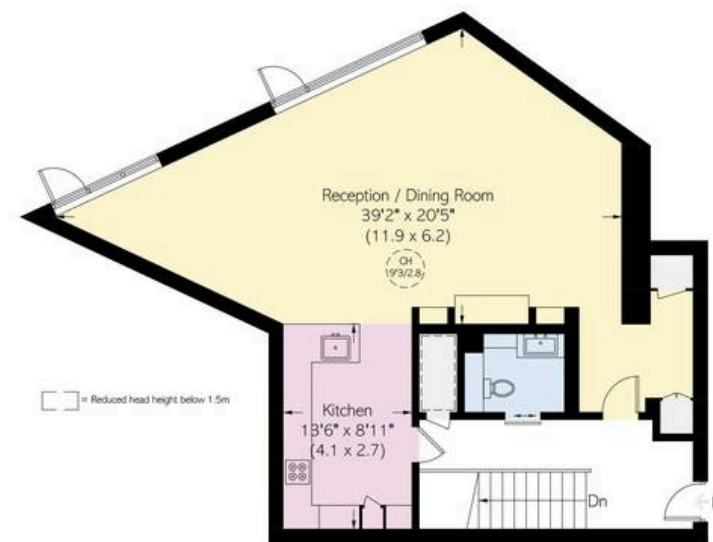
**Including limited use area**  
(5.0 sq m / 54 sq ft)

## RUSSELL SIMPSON

This plan is for layout guidance only.  
Not drawn to scale unless stated. Whilst  
every care is taken in the preparation of this  
plan, please check all dimensions, shapes,  
and compass bearings before making any  
decisions reliant upon them.



First Floor



Second Floor

**RUSSELL  
SIMPSON**

---

## Contact Us

+44 (0) 20 7225 0277

151A Sydney Street  
London  
SW3 6NT

[chelsea@russellsimpson.co.uk](mailto:chelsea@russellsimpson.co.uk)

In accordance with the Property Mis-Description Act 1991, the following details have been prepared in good faith, and are not intended to constitute part of an offer or contract. Any information contained herein (whether in the text, plans or photographs) is given in good faith but should not be relied upon as being a statement of representation of fact. Nothing in these Particulars shall be deemed to be a statement that the property is in good condition or otherwise nor that any services or facilities are in good working order. Any measurements of distances referred to herein are approximate only. October 2021