



**RUSSELL  
SIMPSON**

King's Road

KING'S ROAD  
WEST CHELSEA SW10

King's Road

Let

BEDROOMS 2-2	INTERNAL 627 SQ FT	OUTDOOR —	FURNISHED STATUS Unfurnished
BATHROOMS 2	58 SQM	EPC D	COUNCIL TAX RBKC, D



## The Property

The property benefits from two large south facing windows in the open plan kitchen / reception room which gives an abundance of natural light. The two bedrooms, each with their own bathroom, sit quietly at the back of the property. This duplex apartment has the added benefit of plenty of storage throughout.

This apartment is situated in West Chelsea on the King's Road and is within close proximity to the many shops and restaurants that the local area has to offer. Offered on an unfurnished basis.

---

img 1

Picture No. 06

img 2

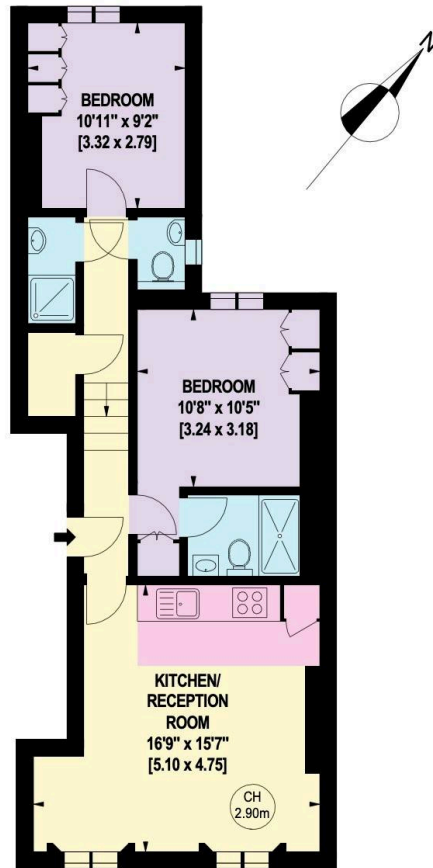
Picture No. 10



# Kings Road, SW10

Approximate Gross Internal Area: 58.25 Sq. metres  
627 Sq. feet

Key :  
CH - Ceiling Height



## FIRST FLOOR

Illustration for identification purposes only, not to scale.

All measurements and areas are approximate, and include wardrobes and window bays where appropriate.  
This Floorplan has been prepared in accordance with the current edition of the RICS code of measuring practice.  
Copyright of FeaturePRO

**RUSSELL  
SIMPSON**

---

## Contact Us

+44 (0) 20 7225 0277

151A Sydney Street  
London  
SW3 6NT

[chelsea@russellsimpson.co.uk](mailto:chelsea@russellsimpson.co.uk)