



**RUSSELL
SIMPSON**

King's Road

KING'S ROAD
WEST CHELSEA SW10

King's Road

Let

BEDROOMS 2-2	INTERNAL 627 SQ FT	OUTDOOR —	FURNISHED STATUS Unfurnished
BATHROOMS 2	58 SQM	EPC D	COUNCIL TAX RBKC, D



The Property

The property benefits from two large south facing windows in the open plan kitchen / reception room which gives an abundance of natural light. The two bedrooms, each with their own bathroom, sit quietly at the back of the property. This duplex apartment has the added benefit of plenty of storage throughout.

This apartment is situated in West Chelsea on the King's Road and is within close proximity to the many shops and restaurants that the local area has to offer. Offered on an unfurnished basis.

img 1

Picture No. 06

img 2

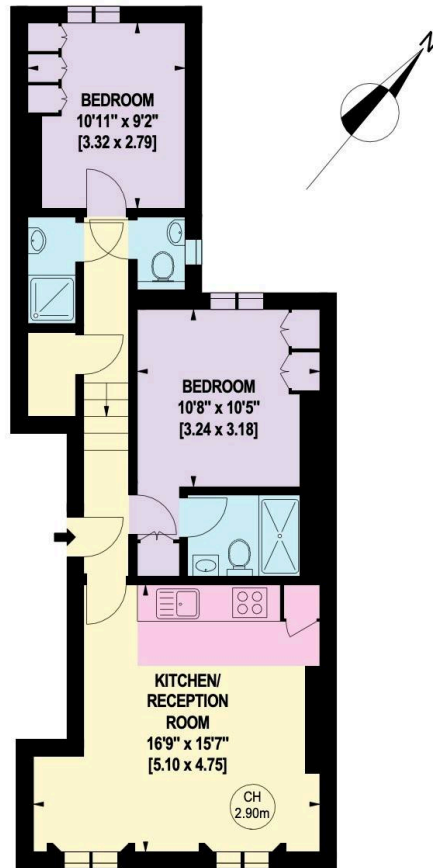
Picture No. 10



Kings Road, SW10

Approximate Gross Internal Area: 58.25 Sq. metres
627 Sq. feet

Key :
CH - Ceiling Height



FIRST FLOOR

Illustration for identification purposes only, not to scale.

All measurements and areas are approximate, and include wardrobes and window bays where appropriate.
This Floorplan has been prepared in accordance with the current edition of the RICS code of measuring practice.
Copyright of FeaturePRO

**RUSSELL
SIMPSON**

Contact Us

+44 (0) 20 7225 0277

Contact us

info@russellsimpson.co.uk

Sydney Street

+44 (0) 20 7225 0277

151A Sydney Street

London

SW3 6NT

chelsea@russellsimpson.co.uk

Kensington Square

+44 (0) 20 3761 9691

13 Kensington Square

London

W8 5HD

kensington@russellsimpson.co.uk