



## **RUSSELL SIMPSON**

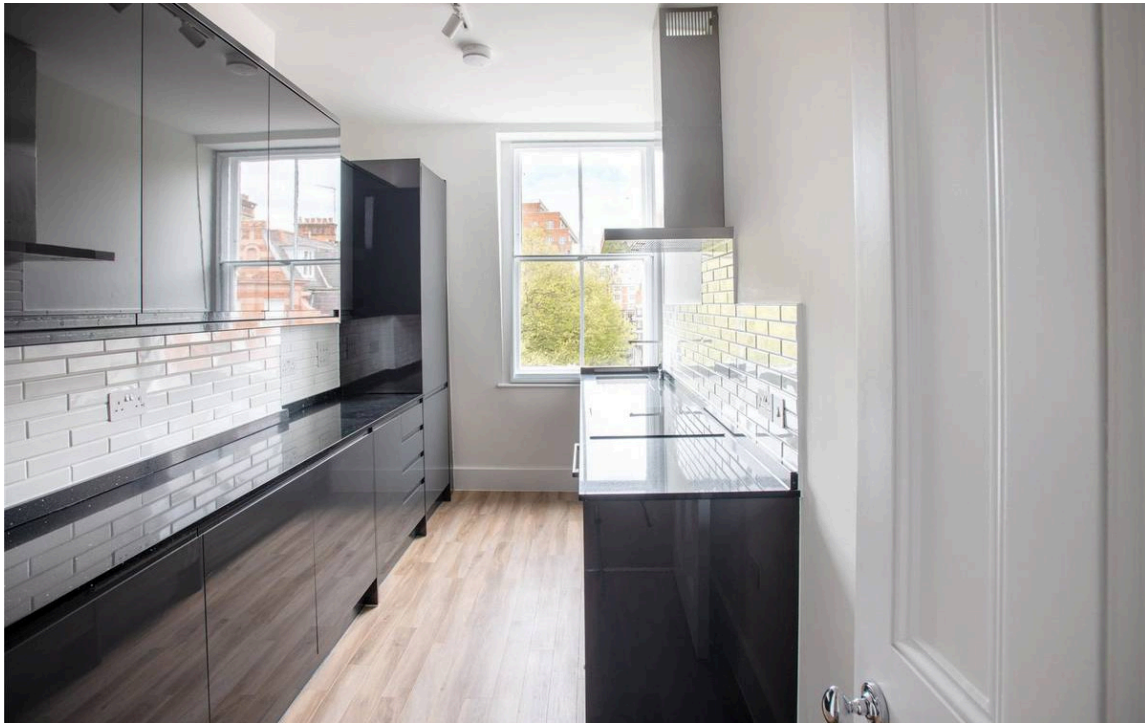
Newly refurbished two bedroom flat  
on a historic garden square to rent

KENSINGTON SQUARE  
KENSINGTON W8

# Kensington Square

Let

BEDROOMS 2	INTERNAL 812 SQ FT	OUTDOOR —	FURNISHED STATUS Unfurnished
BATHROOMS 1	75 SQM	EPC E	COUNCIL TAX RBKC, E



## The Property

Quiet and comfortable flat within walking distance of Kensington High Street and Kensington Gardens

Stepping into the flat on the fourth floor, the front hall leads through to a well-proportioned reception room. As well as plenty of space for dining and seating areas, this room has a wide window with a beautiful view over the square. Next door is a fitted kitchen with modern appliances.

---

img 1

Kitchen

img 2

Reception Room





## Indoor Spaces

The flat has been newly refurbished. It is decorated in a neutral palette, giving bright and tranquil rooms.

The flat also contains a pair of bedrooms. The principal bedroom has inbuilt storage, while the second bedroom has a south-facing window bringing in extra light. There is also a study or dressing room beside the principal bedroom.

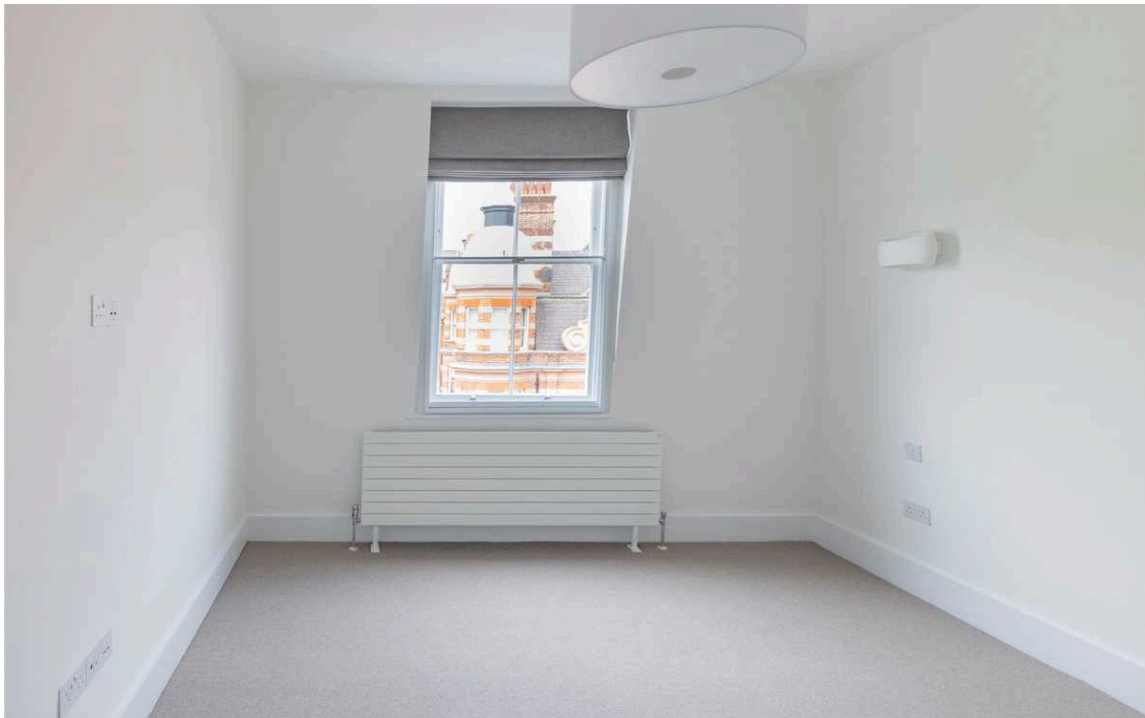
---

img 1

Double Bedroom

img 2

Bedroom



# The Neighbourhood

Kensington Square has a rich religious, academic and artistic history. In the nineteenth century, it was home to the artist Edward Burne-Jones, the philosopher John Stuart Mill, and the composer Hubert Parry. Today, the square is within walking distance of Kensington High Street underground station, as well as the open spaces of Kensington Gardens and Hyde Park. In addition, the area's outstanding restaurants, shops and schools are all in easy reach.



# Kensington Square, W8

**RUSSELL  
SIMPSON**

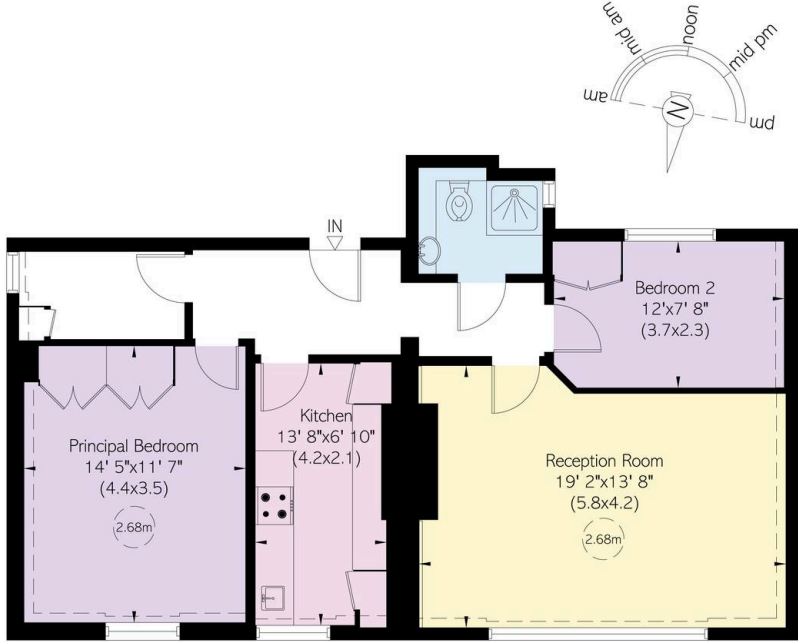
**Approximate Internal Area**

812 sq ft/ 75 sq m

**Outside Area**

34 sq ft/ 3 sq m

This plan is for layout guidance only. Not drawn to scale unless stated. Windows and door openings are approximate. Whilst every care is taken in the preparation of this plan, please check all dimensions, shapes, and compass bearings before making any decisions reliant upon them.



Fourth Floor

**RUSSELL  
SIMPSON**

---

## Contact Us

+44 (0) 20 3761 9691

13 Kensington Square  
London  
W8 5HD

[kensington@russellsimpson.co.uk](mailto:kensington@russellsimpson.co.uk)