



## **RUSSELL SIMPSON**

Notting Hill flat with beautiful  
rooftop views to rent

KENSINGTON PLACE  
KENSINGTON W8

# Kensington Place

Let

BEDROOMS 1-1	INTERNAL 469 <sub>SQ FT</sub>	OUTDOOR —	FURNISHED STATUS Furnished
BATHROOMS 1-1	43 <sub>SQM</sub>	EPC C	COUNCIL TAX RBKC, D



## The Property

One bedroom studio in a modern building with lift close to Notting Hill Gate underground station

Entering the flat on the fifth floor, the door opens onto a front hall with storage space. The hall leads through a reception room with enough space for separate dining and seating areas. In addition, wide windows offer views over the surrounding rooftops.

The reception room contains a double bedroom, partitioned from the room to give added privacy. In addition, the flat contains a kitchen and a bathroom.

Available from 12th October 2023.





## The Neighbourhood

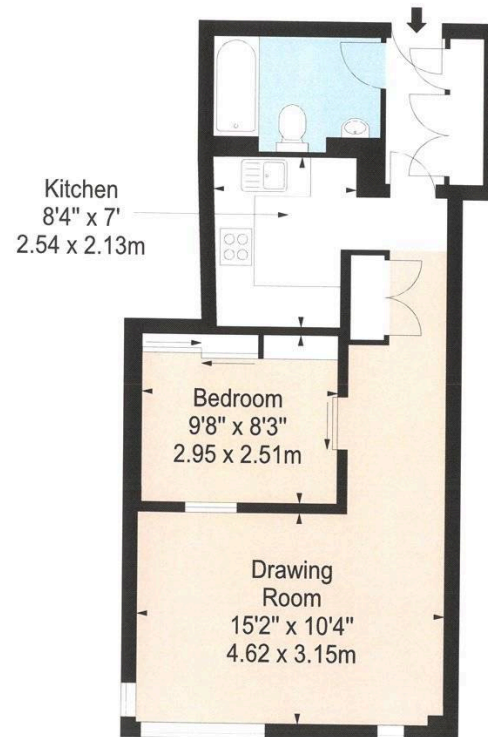
Palmerston House is a modern, red-brick building with a lift. It is located on Kensington Place, a residential street mostly lined with low-build terrace houses painted pastel colours. The nearby primary school hosts the Notting Hill Farmers' Market each Saturday morning.

From here, Notting Hill Gate underground station is a short walk away, as well as the neighbourhood's many shops and restaurants. In addition, the open spaces of Kensington Gardens and Hyde Park are close, while Holland Park is also within walking distance.

**PALMERSTON HOUSE W8**  
**APPROX. GROSS INTERNAL AREA \***  
**469 Ft<sup>2</sup> - 43.57 M<sup>2</sup>**

Illustration For Identification Only, Not to Scale  
All Calculations include Any/All Areas Under 1.5m Head Height.

\* As Defined by RICS - Code of Measuring Practice



**FIFTH FLOOR**



[www.bkrfloorplans.co.uk](http://www.bkrfloorplans.co.uk)  
T: 0345 257 2023  
© BKR 2017

**RUSSELL  
SIMPSON**

---

## Contact Us

+44 (0) 20 7225 0277

Contact us

[info@russellsimpson.co.uk](mailto:info@russellsimpson.co.uk)

---

## Sydney Street

+44 (0) 20 7225 0277

151A Sydney Street

London

SW3 6NT

[chelsea@russellsimpson.co.uk](mailto:chelsea@russellsimpson.co.uk)

---

## Kensington Square

+44 (0) 20 3761 9691

13 Kensington Square

London

W8 5HD

[kensington@russellsimpson.co.uk](mailto:kensington@russellsimpson.co.uk)