



## **RUSSELL SIMPSON**

Stylish two-bedroom Kensington flat  
to rent with south-facing terrace

KENSINGTON HIGH STREET  
KENSINGTON W8

# Kensington High Street

# Let

BEDROOMS 2	INTERNAL 910 <sub>SQ FT</sub>	OUTDOOR —	FURNISHED STATUS Unfurnished
BATHROOMS 1	84 <sub>SQM</sub>	EPC B	COUNCIL TAX RBKC, E



## The Property

Exceptionally convenient flat with contemporary interiors close to Kensington High Street station

Entering the flat on the first floor, the front hall leads through to an open-plan kitchen and reception room. As well as high ceilings and full-length double-glazed windows, this room has enough space for separate dining and seating areas.



## Indoor Spaces

The property also contains a pair of bedrooms with built-in storage and a shared bathroom with underfloor heating. Wooden floors, metal fittings and painted brickwork add to the sense of modern style.

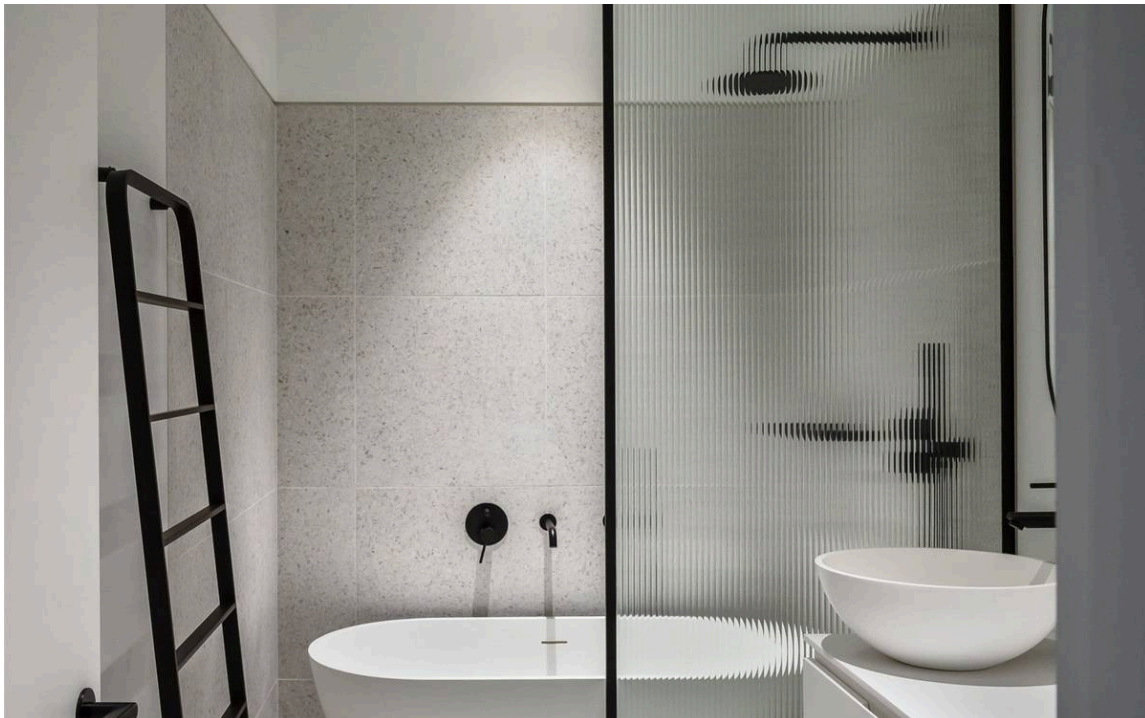
---

img 1

Bedroom

img 2

Bathroom





## The Neighbourhood

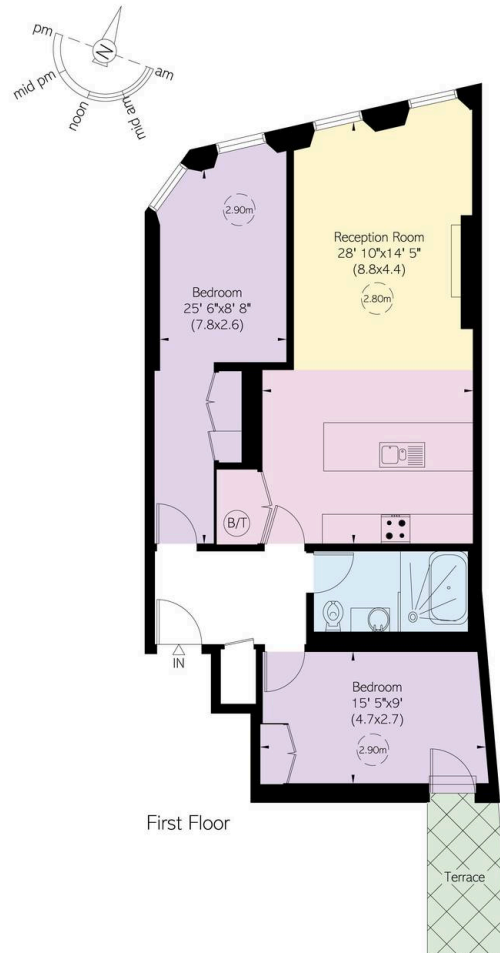
The property includes a south-facing terrace with rooftop views.

The flat is located in the heart of Kensington. The restaurants, shops and underground station of High Street Kensington are all within easy reach. In addition, the southern entrance to Holland Park is a short walk away.

Kensington High Street, W8 **RUSSELL SIMPSON**

**Approximate Internal Area**  
910 sq ft/ 84 sq m

This plan is for layout guidance only. Not drawn to scale unless stated. Windows and door openings are approximate. Whilst every care is taken in the preparation of this plan, please check all dimensions, shapes, and compass bearings before making any decisions reliant upon them.



**RUSSELL  
SIMPSON**

---

## Contact Us

+44 (0) 20 7225 0277

Contact us

[info@russellsimpson.co.uk](mailto:info@russellsimpson.co.uk)

---

## Sydney Street

+44 (0) 20 7225 0277

151A Sydney Street

London

SW3 6NT

[chelsea@russellsimpson.co.uk](mailto:chelsea@russellsimpson.co.uk)

---

## Kensington Square

+44 (0) 20 3761 9691

13 Kensington Square

London

W8 5HD

[kensington@russellsimpson.co.uk](mailto:kensington@russellsimpson.co.uk)