



## **RUSSELL SIMPSON**

Stylish Kensington penthouse with  
two spacious balconies to rent

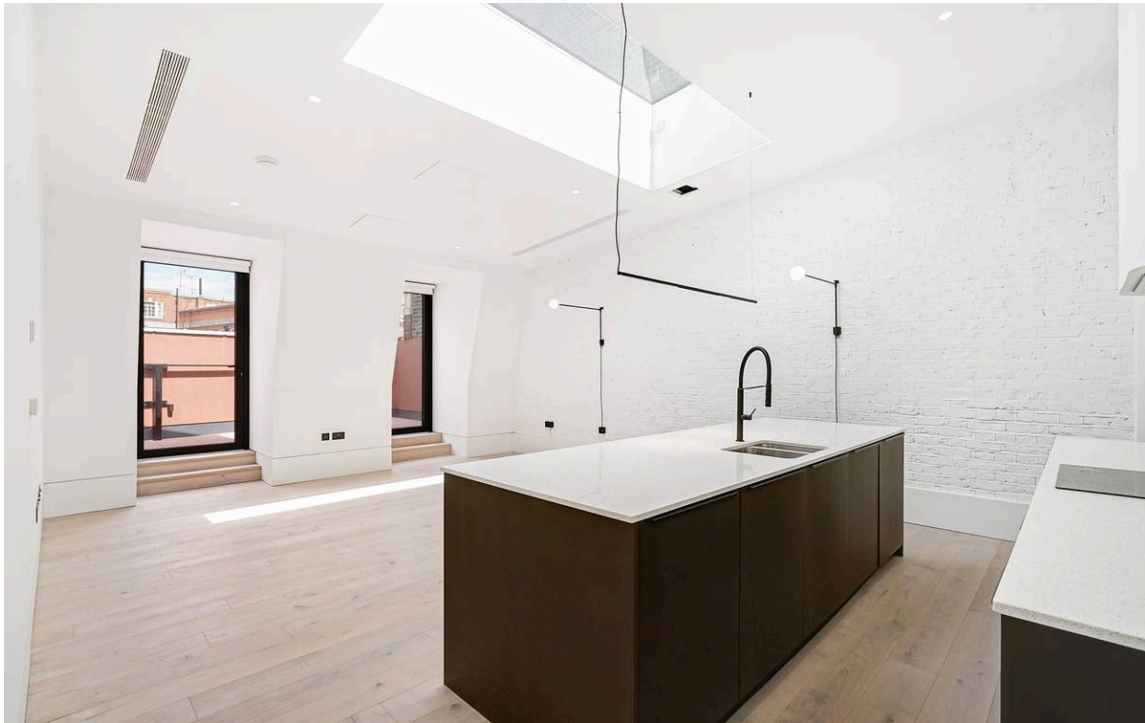
KENSINGTON HIGH STREET  
KENSINGTON W8

VIRTUALLY STAGED IMAGE FULHAM  
PERFORMANCE

# Kensington High Street

# Let

BEDROOMS 2	INTERNAL 1,334 SQ FT	OUTDOOR —	FURNISHED STATUS Furnished / Unfurnished
BATHROOMS 2	123 SQM	EPC B	COUNCIL TAX RBKC, E



## The Property

Exceptionally convenient two bedroom flat moments away from Kensington High Street station

This third-floor property centres on a spacious open-plan kitchen with enough space for separate dining and seating areas, as well as a pair of French doors opening onto the first balcony.

The images are OGI photos.





## The Bedrooms

The flat also contains a principal bedroom with an ensuite bathroom and built-in storage, as well as two French doors leading through to a second, south-facing balcony. Furthermore, there is a second bedroom with a Juliet balcony and a second bathroom.

The property includes additional storage space and a staircase leading down to the second-floor entrance. Painted brick walls and minimal interiors enhance the contemporary feel.





## Outdoor Spaces

The property offers a spacious balcony along one side of the building with enough space for outdoor seating, and a south-facing balcony with beautiful views over the rooftops of Eden Close.



## The Bedrooms

The flat is located in the heart of Kensington. The restaurants, shops and underground station of High Street Kensington are all within easy reach. In addition, the southern entrance to Holland Park is a short walk away.



## The Neighbourhood

The property further benefits from being only moments away from Kensington Gardens and Holland Park, as well as all the amenities and transport links provided by Kensington High Street.

**PENTHOUSE, 163 KENSINGTON HIGH STREET, W8**

Approximate Area = 1334 sq ft/ 124 sq m

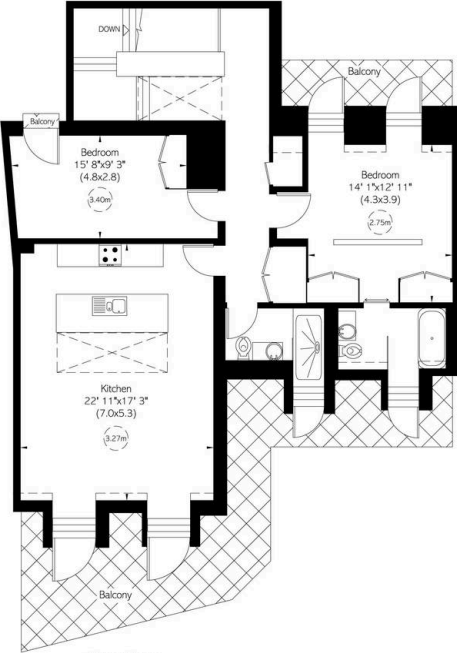
Including Limited Use Area (14 sq ft/ 1 sq m)



Reduced head height below 1.5m



Second Floor



Third Floor

<p><b>VIEWING ARRANGEMENTS</b></p> <p>Telephone: +44 (0) 20 3761 9691 Email: <a href="mailto:info@russellsimpson.co.uk">info@russellsimpson.co.uk</a></p> <p><small>This plan is for layout guidance only. Not drawn to scale unless stated. Windows and door openings are approximate. Whilst every care is taken in the preparation of this plan, please check all dimensions, shapes and corners carefully before making any decisions reliant upon them.</small></p>	<p><b>RUSSELL SIMPSON</b></p>
--	-----------------------------------



**RUSSELL  
SIMPSON**

---

## Contact Us

+44 (0) 20 7225 0277

Contact us

[info@russellsimpson.co.uk](mailto:info@russellsimpson.co.uk)

---

## Sydney Street

+44 (0) 20 7225 0277

151A Sydney Street

London

SW3 6NT

[chelsea@russellsimpson.co.uk](mailto:chelsea@russellsimpson.co.uk)

---

## Kensington Square

+44 (0) 20 3761 9691

13 Kensington Square

London

W8 5HD

[kensington@russellsimpson.co.uk](mailto:kensington@russellsimpson.co.uk)