

## **RUSSELL SIMPSON**

Stylish flat to rent moments away  
Kensington High Street station

KENSINGTON HIGH STREET  
KENSINGTON W8

# Kensington High Street

# Let

BEDROOMS 1	INTERNAL 529 <sub>SQ FT</sub>	OUTDOOR —	FURNISHED STATUS Furnished
BATHROOMS 1	49 <sub>SQM</sub>	EPC B	COUNCIL TAX RBKC, D



# The Property

One bedroom flat with modern interiors within easy reach of Holland Park

---

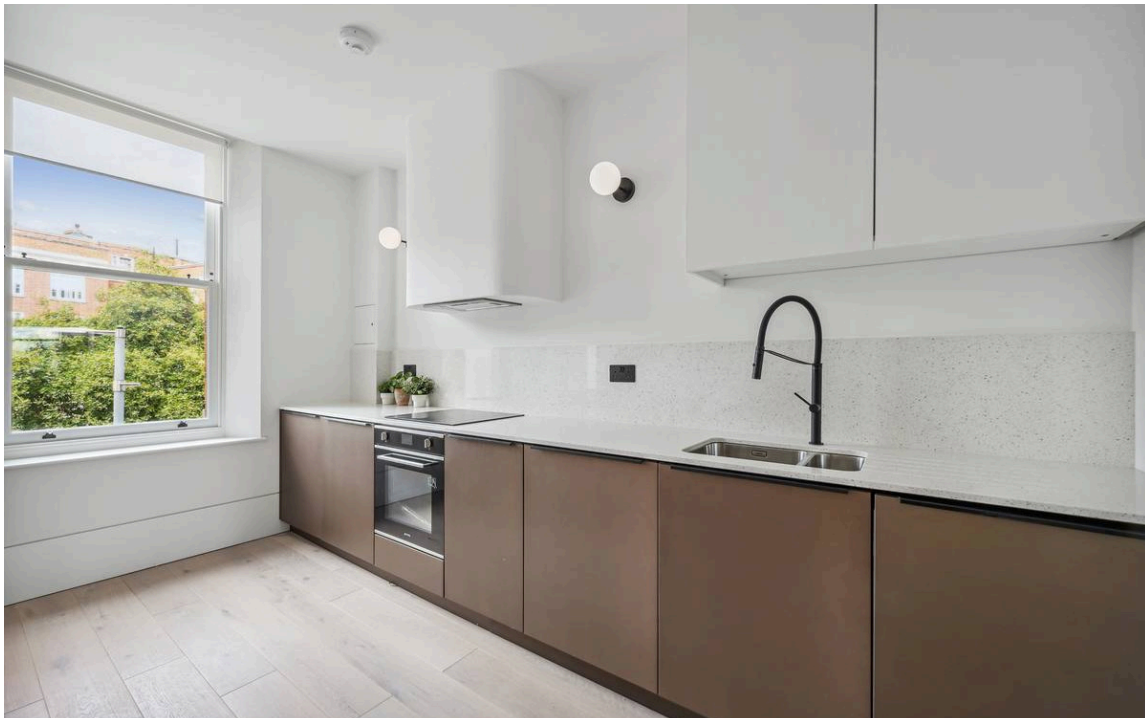
img 1

Dining Area

img 2

---

Kitchen





## Indoor Spaces

Entering the flat on the second floor, the front halls leads through to a generous reception room. This includes an open-plan kitchen, as well as enough space for separate dining and eating areas.



## The Bedrooms

The rear side of the flat features a double bedroom with built-in storage. In addition, the pair of sash windows offer a beautiful view along the picturesque rooftops of Adam and Eve mews.

The property also includes a contemporary bathroom with bath. In addition, it has wooden floors and is decorated in a modern, minimal style.





## The Neighbourhood

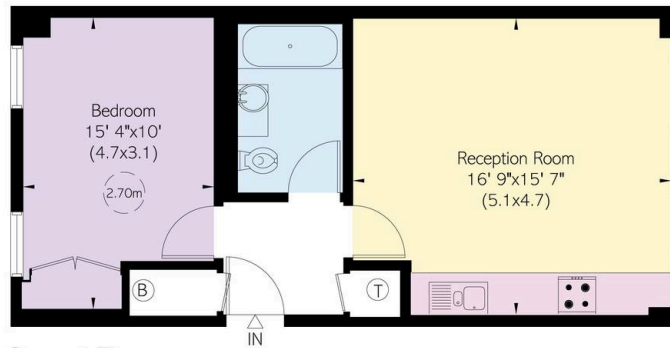
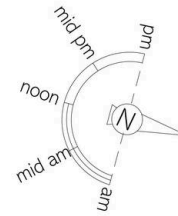
The flat is located in the heart of Kensington. The restaurants, shops and underground station of High Street Kensington are all within easy reach. In addition, the southern entrance to Holland Park is a short walk away.

# Kensington High Street, W8

**RUSSELL  
SIMPSON**

**Approximate Internal Area**  
529 sq ft/ 49 sq m

This plan is for layout guidance only. Not drawn to scale unless stated. Windows and door openings are approximate. Whilst every care is taken in the preparation of this plan, please check all dimensions, shapes, and compass bearings before making any decisions reliant upon them.



Second Floor

**RUSSELL  
SIMPSON**

---

## Contact Us

+44 (0) 20 7225 0277

Contact us

[info@russellsimpson.co.uk](mailto:info@russellsimpson.co.uk)

---

## Sydney Street

+44 (0) 20 7225 0277

151A Sydney Street

London

SW3 6NT

[chelsea@russellsimpson.co.uk](mailto:chelsea@russellsimpson.co.uk)

---

## Kensington Square

+44 (0) 20 3761 9691

13 Kensington Square

London

W8 5HD

[kensington@russellsimpson.co.uk](mailto:kensington@russellsimpson.co.uk)