



## **RUSSELL SIMPSON**

Charming two bedroom apartment  
in a prime Kensington location

KENSINGTON COURT  
KENSINGTON W8

# Kensington Court

£925 P/W

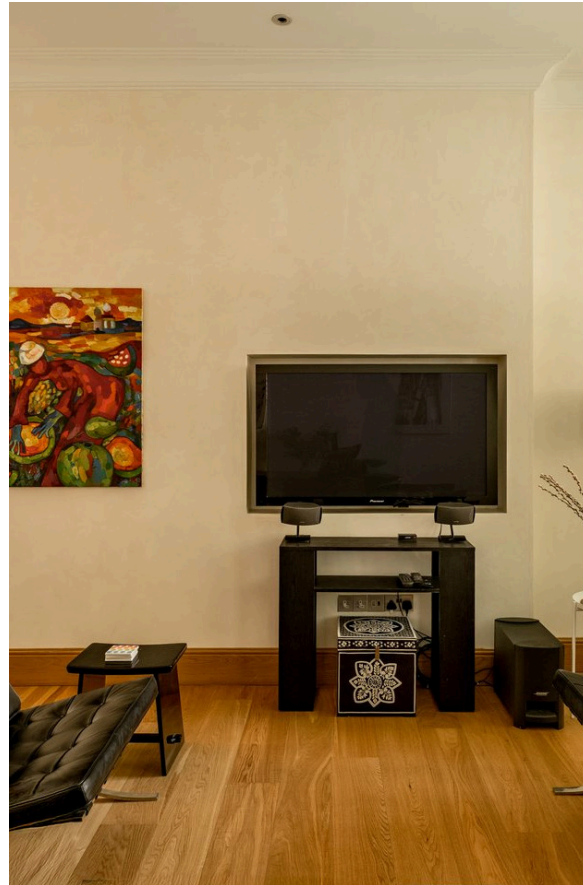
BEDROOMS 2	INTERNAL  986 <small>SQ FT</small>  91 <small>SQM</small>	OUTDOOR  50 <small>SQ FT</small>	FURNISHED STATUS  Furnished / Unfurnished
BATHROOMS 2		EPC  C	COUNCIL TAX  RBKC, G

## The Property

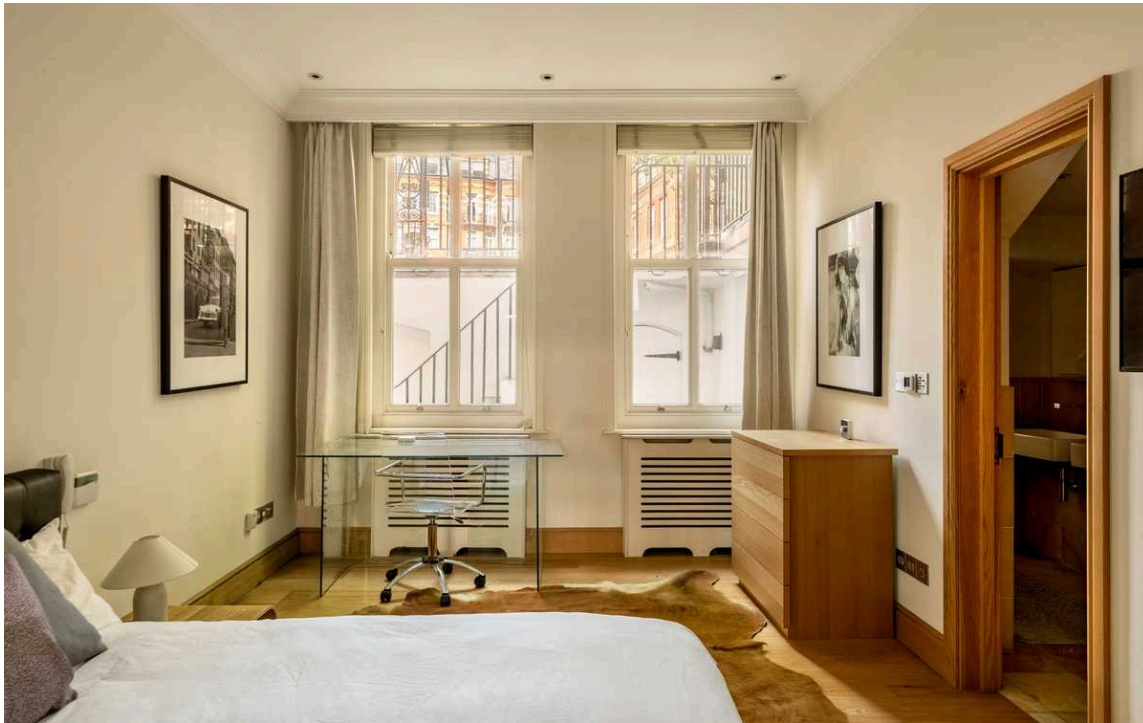
A well-proportioned two-bedroom apartment set within a handsome period building in Kensington.

Stepping into the apartment, residents are welcomed by a bright reception and dining room featuring large windows that flood the space with natural light.

The kitchen is well-appointed with modern appliances, wooden cabinetry, and ample counter space for food preparation.







## The Bedrooms

Both bedrooms are generously sized, with the principal bedroom benefiting from built-in storage and a large en-suite bathroom complete with double sinks, a shower, and a bath. The second bedroom is equally well-proportioned and is served by a separate shower room featuring contemporary fixtures.



## Outdoor Spaces

The property includes a small patio area accessible from the principal bedroom

# The Neighbourhood

Kensington Court is a quiet residential address in one of London's most sought-after neighbourhoods. The property is moments away from Kensington High Street with its superb selection of shops, restaurants, and cafés. Kensington Gardens and Hyde Park are within easy walking distance, providing extensive green space. Transport links are excellent, with High Street Kensington underground station nearby, offering convenient connections across London.

## Kensington Court, W8

**RUSSELL  
SIMPSON**

### Approximate Internal Area

986 sq ft/ 92 sq m

### Outside Area

50 sq ft/ 5 sq m

This plan is for layout guidance only. Not drawn to scale unless stated. Windows and door openings are approximate. Whilst every care is taken in the preparation of this plan, please check all dimensions, shapes, and compass bearings before making any decisions reliant upon them.



**RUSSELL  
SIMPSON**

---

## Contact Us

+44 (0) 20 3761 9691

13 Kensington Square  
London  
W8 5HD

[kensington@russellsimpson.co.uk](mailto:kensington@russellsimpson.co.uk)