



## **RUSSELL SIMPSON**

Elegant four-bedroom flat to rent in  
an impressive Victorian villa with  
white stucco façade

HOLLAND PARK  
HOLLAND PARK W11

Holland Park

£3,000 <sub>P/W</sub>

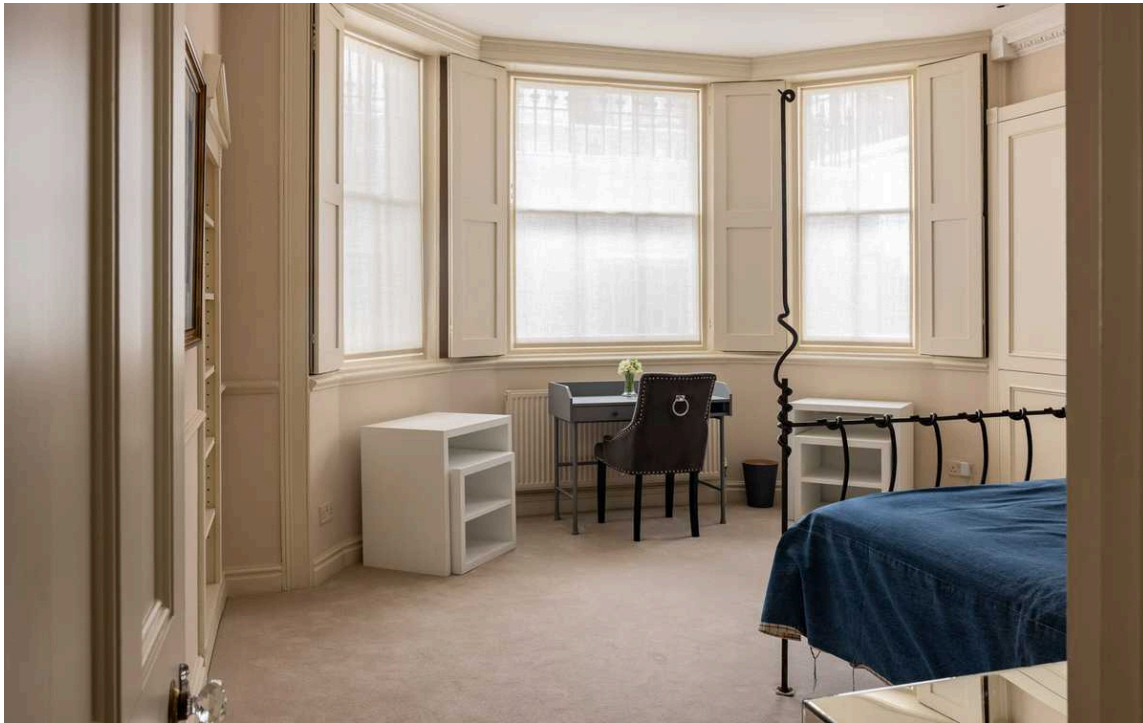
BEDROOMS 4	INTERNAL  2,153 <sub>SQ FT</sub>  200 <sub>SQM</sub>	OUTDOOR  —	FURNISHED STATUS  Furnished / Unfurnished
BATHROOMS 3		EPC  D	COUNCIL TAX  RBKC, H

# The Property



Duplex flat with bright and spacious reception rooms on a historic street next to Holland Park

Entering the flat on the raised ground floor, the front hall leads into a generous reception room. This includes high ceilings and a south-facing bay, with full-length windows overlooking a beautiful garden. On the opposite side of the flat is a dining room, also with high ceilings and a large bay window, flowing to a kitchen with fitted units and marble worktops.



## The Bedrooms

The lower round floor features four bedrooms. The principal bedroom has an ensuite bathroom and considerable wardrobe space. There are three more bedrooms and two more bathrooms, one of them ensuite, as well as further storage space in the hall. A guest WC completes this level.





## The Design

The tasteful interiors are decorated in a colourful fashion. Ornate cornices, wooden floors and decorative wainscoting add to the sense of traditional elegance.





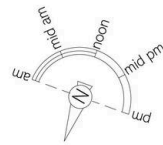


## The Neighbourhood

The flat is part of a double-fronted stucco townhouse with a lift built in the mid-Victorian era. These grand villas were constructed between 1860 and 1880 by the brothers William and Francis Radford. Early residents of the street included aristocrats and statesmen, as well as prominent engineers, politicians and lawyers. Residents have access to the communal gardens.

From here, Holland Park underground station is a few moments' walk away, while the restaurants and shops of Notting Hill are also nearby. In addition, the open spaces of Holland Park are close.





## Holland Park, W11

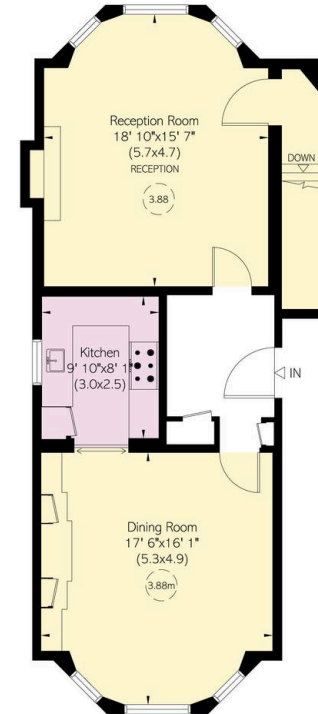
**Approximate Internal Area**  
2,153 sq ft / 200 sq m

**RUSSELL  
SIMPSON**

This plan is for layout guidance only. Not drawn to scale unless stated. Windows and door openings are approximate. Whilst every care is taken in the preparation of this plan, please check all dimensions, shapes, and compass bearings before making any decisions reliant upon them.



Lower Ground Floor



Raised Ground Floor

**RUSSELL  
SIMPSON**

---

## Contact Us

+44 (0) 20 3761 9691

13 Kensington Square  
London  
W8 5HD

[kensington@russellsimpson.co.uk](mailto:kensington@russellsimpson.co.uk)