



## **RUSSELL SIMPSON**

Charming two-bedroom apartment  
in this period building with  
communal gardens

HOBURY STREET  
CHELSEA SW10

Hobury Street

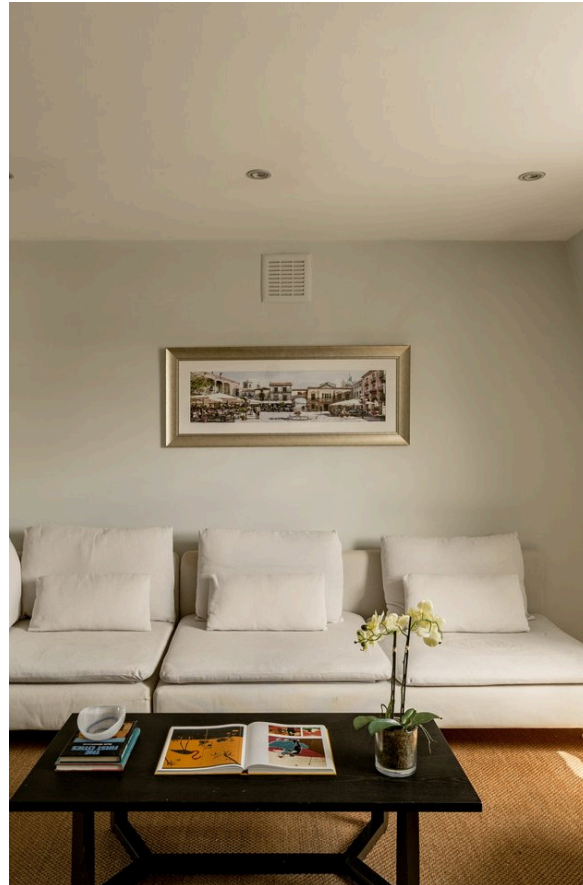
£750 P/W

<div>BEDROOMS</div> <div>2</div>	<div>INTERNAL</div> <div>741 <small>SQ FT</small></div> <div>68 <small>SQM</small></div>	<div>OUTDOOR</div> <div>—</div>	<div>FURNISHED STATUS</div> <div>Furnished</div>
<div>BATHROOMS</div> <div>1</div>		<div>EPC</div> <div>D</div>	<div>COUNCIL TAX</div> <div>RBKC, G</div>

## The Property

A delightful two-bedroom apartment on the third floor of a period conversion building.

Throughout the flat, wooden floors add warmth and character to the generously sized rooms within this charming period conversion.





## Indoor Spaces

Stepping into this well-proportioned flat, you are greeted by a lovely reception room filled with natural light. The large eat-in kitchen features fitted units and includes space for a dining table.





## The Bedrooms

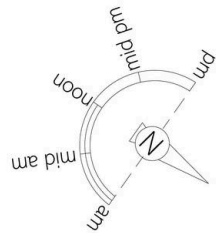
The principal bedroom benefits from fitted wardrobes, whilst a second single bedroom offers additional flexibility. The apartment is completed by a well-appointed bathroom.





## The Neighbourhood

Hobury Street is a quiet residential address in Chelsea, perfectly positioned for easy access to both Sloane Square and South Kensington underground stations. The location offers sophisticated shopping and dining of the King's Road moments away, alongside the cultural attractions of South Kensington. This desirable SW10 postcode provides a village-like atmosphere whilst remaining within easy reach of all the facilities that Chelsea and Kensington have to offer.



## Hobury Street, SW10

**RUSSELL  
SIMPSON**

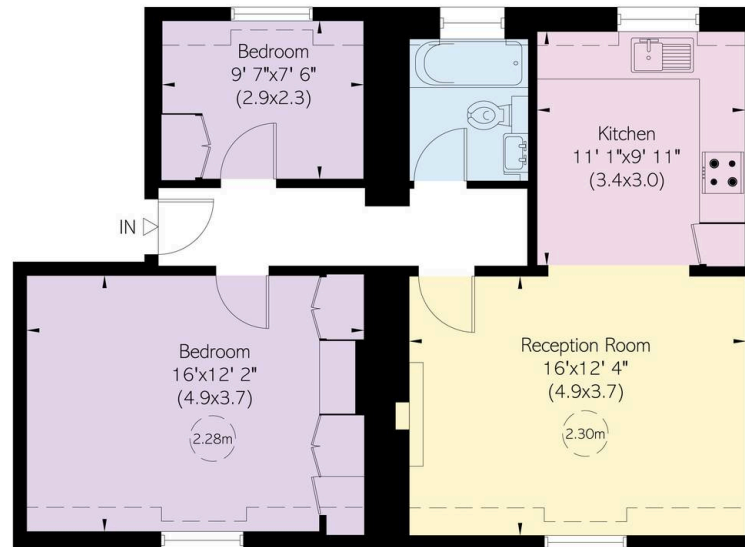
### Approximate Internal Area

741 sq ft/ 69 sq m

### Including limited use area

50 sq ft/ 5 sq m

This plan is for layout guidance only. Not drawn to scale unless stated. Windows and door openings are approximate. Whilst every care is taken in the preparation of this plan, please check all dimensions, shapes, and compass bearings before making any decisions reliant upon them.



Third Floor

**RUSSELL  
SIMPSON**

---

## Contact Us

+44 (0) 20 7225 0277

151A Sydney Street  
London  
SW3 6NT

[chelsea@russellsimpson.co.uk](mailto:chelsea@russellsimpson.co.uk)

In accordance with the Property Mis-Description Act 1991, the following details have been prepared in good faith, and are not intended to constitute part of an offer or contract. Any information contained herein (whether in the text, plans or photographs) is given in good faith but should not be relied upon as being a statement of representation of fact. Nothing in these Particulars shall be deemed to be a statement that the property is in good condition or otherwise nor that any services or facilities are in good working order. Any measurements of distances referred to herein are approximate only. October 2021