



RUSSELL SIMPSON

Superlative five-bedroom family
home on a prestigious South
Kensington square to rent

HEREFORD SQUARE
SOUTH KENSINGTON SW7

Hereford Square

£8,750 P/W

BEDROOMS 5	INTERNAL 3,617 <small>SQ FT</small>	OUTDOOR 420 <small>SQ FT</small>	FURNISHED STATUS Furnished
BATHROOMS 5	336 <small>SQM</small>	EPC D	COUNCIL TAX RBKC, H



The Property

White stucco townhouse with gym, home cinema and elegant interiors close to Gloucester Road station

Entering the house on the ground floor, the front hall includes an informal seating area and a beautiful staircase rising up through the property. Beyond is a moral formal reception room with high ceilings, an ornate fireplace and double French doors opening onto a terrace.





Indoor Spaces

The lower ground floor features a well-proportioned open-plan kitchen with an island breakfast bar. It opens onto a dining area, filled with light that to an overhead skylight and floor-to-ceiling sliding doors that lead onto the rear patio. This floor also contains a family television room, a guest WC and separate street access. Below, the basement floor offers a gym and a home cinema.





The Bedrooms

The first floor is entirely occupied by the sublime principal bedroom suite. The bedroom has a pair of full-length French doors opening onto the front balcony, as well as an ensuite bathroom, a corridor wardrobe and a study with garden views.

The second and third floors both feature a pair of ensuite bedrooms, bringing the total number to five. The attic fourth floor has considerable storage space.





The Design

The interiors blend contemporary and classical details to offer both elegance and convenience. The dark wooden floors and high-quality bathrooms add to the sense of sophistication.



Outdoor Spaces

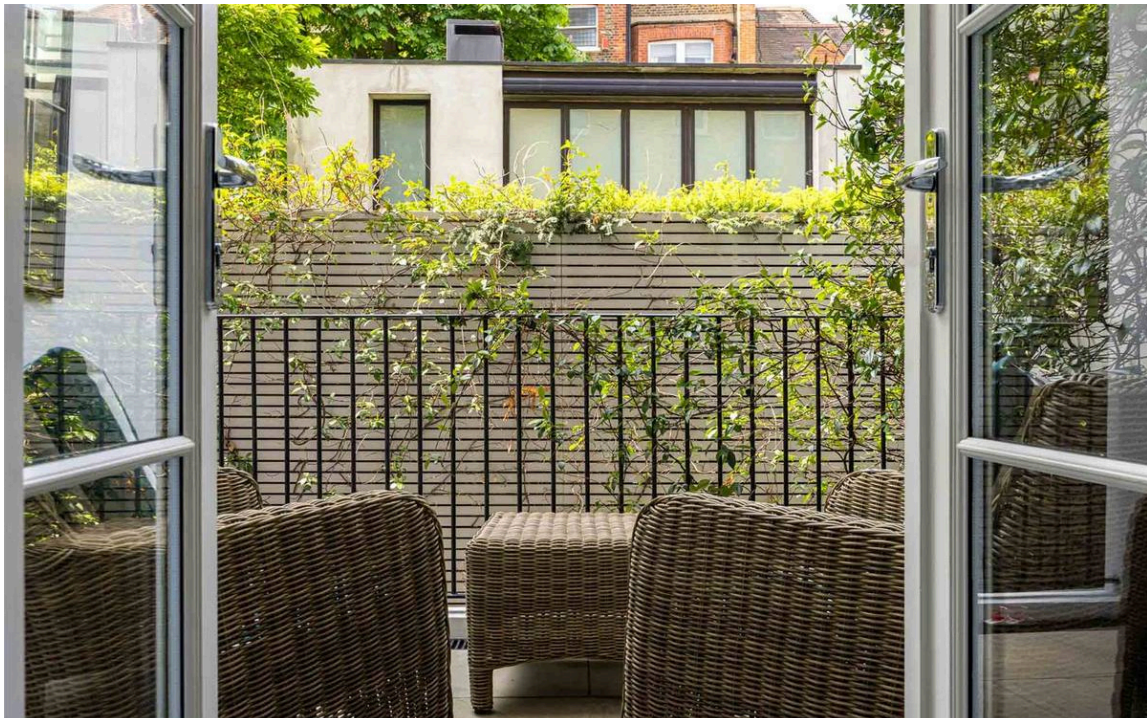
The property includes a patio garden with enough space for outdoor seating and a west-facing terrace that catches the afternoon light. There is also a front balcony with views over the communal garden square. Residents have the right to access the square.

img 1

Hereford Square

img 2

Balcony





The Neighbourhood

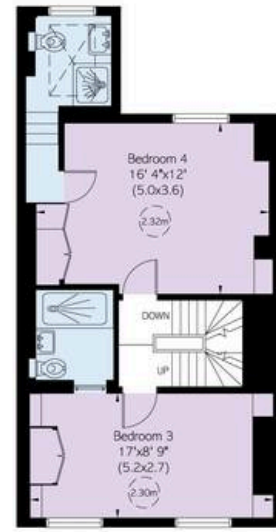
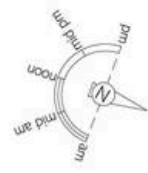
The houses of Hereford Square were built by the architect Thomas Holmes between 1845 and 1850. Their white stucco facades are decorated with Italianate architectural details, creating a sense of grandeur. Over the years they have been home to various celebrated writers and artists. From here, Gloucester Road station is a short walk away. Furthermore, the Old Brompton Road is lined with a mix of excellent restaurants and independent boutiques.

Hereford Square, SW7

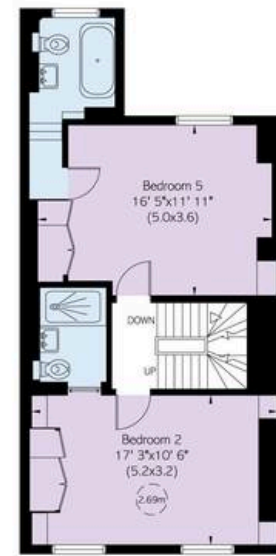
RUSSELL SIMPSON

Approximate Internal Area
3,617 sq ft/ 336 sq m
Including outside storage
51 sq ft/ 5 sq m
Outside Area
420 sq ft/ 39 sq m

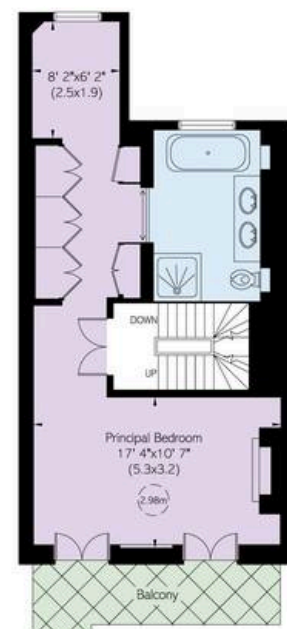
This plan is for layout guidance only. Not drawn to scale unless stated. Windows and door openings are approximate. Whilst every care is taken in the preparation of this plan, please check all dimensions, shapes, and compass bearings before making any decisions reliant upon them.



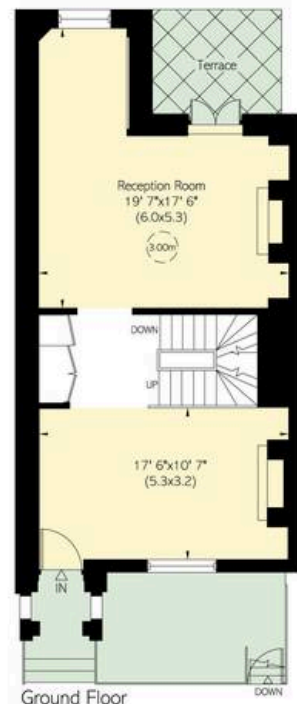
Third Floor



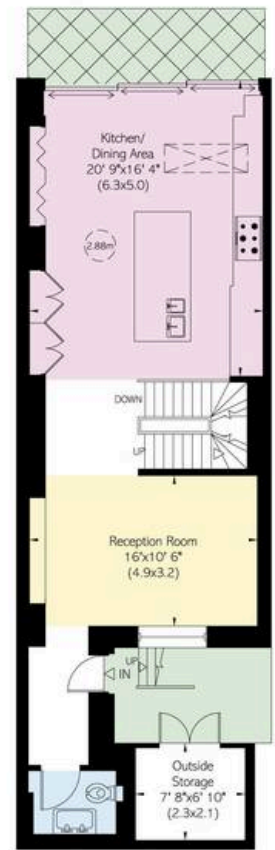
Second Floor



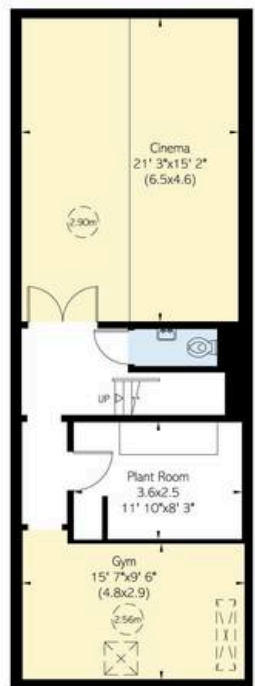
First Floor



Ground Floor



Lower Ground Floor



Basement

**RUSSELL
SIMPSON**

Contact Us

+44 (0) 20 7225 0277

151A Sydney Street
London
SW3 6NT

chelsea@russellsimpson.co.uk