



RUSSELL SIMPSON

A lower ground floor one bedroom
flat with garden access situated on
Heathfield Terrace

HEATHFIELD TERRACE
CHISWICK W4

Heathfield Terrace

Let

BEDROOMS 1	INTERNAL 571 SQ FT	OUTDOOR —	FURNISHED STATUS Unfurnished
BATHROOMS 1	53 SQM	EPC C	COUNCIL TAX Hounslow, D



The Property

A ground floor one bedroom flat with garden access situated on Heathfield Terrace

This recently redecorated ground floor flat, with its own private entrance is situated in prime Chiswick and ideal for a single professional or couple. The flat consists of an open plan living area and modern kitchen where a dishwasher and washing machine can be found.

img 1

Open Plan Living





The Bedroom

To the rear of the home, you can find the bathroom which then leads into the bright double bedroom which has direct access to a shared patio area. A large storage cupboard is also located in the property where there is enough room for bicycle etc.





The Neighbourhood

Heathfield terrace, which overlooks Turnham Green is a short walk away from the many shops, restaurants and pubs the High Road has to offer. Chiswick Park underground station is a 5 minute walk away.



Heathfield Terrace, W4


**RUSSELL
SIMPSON**

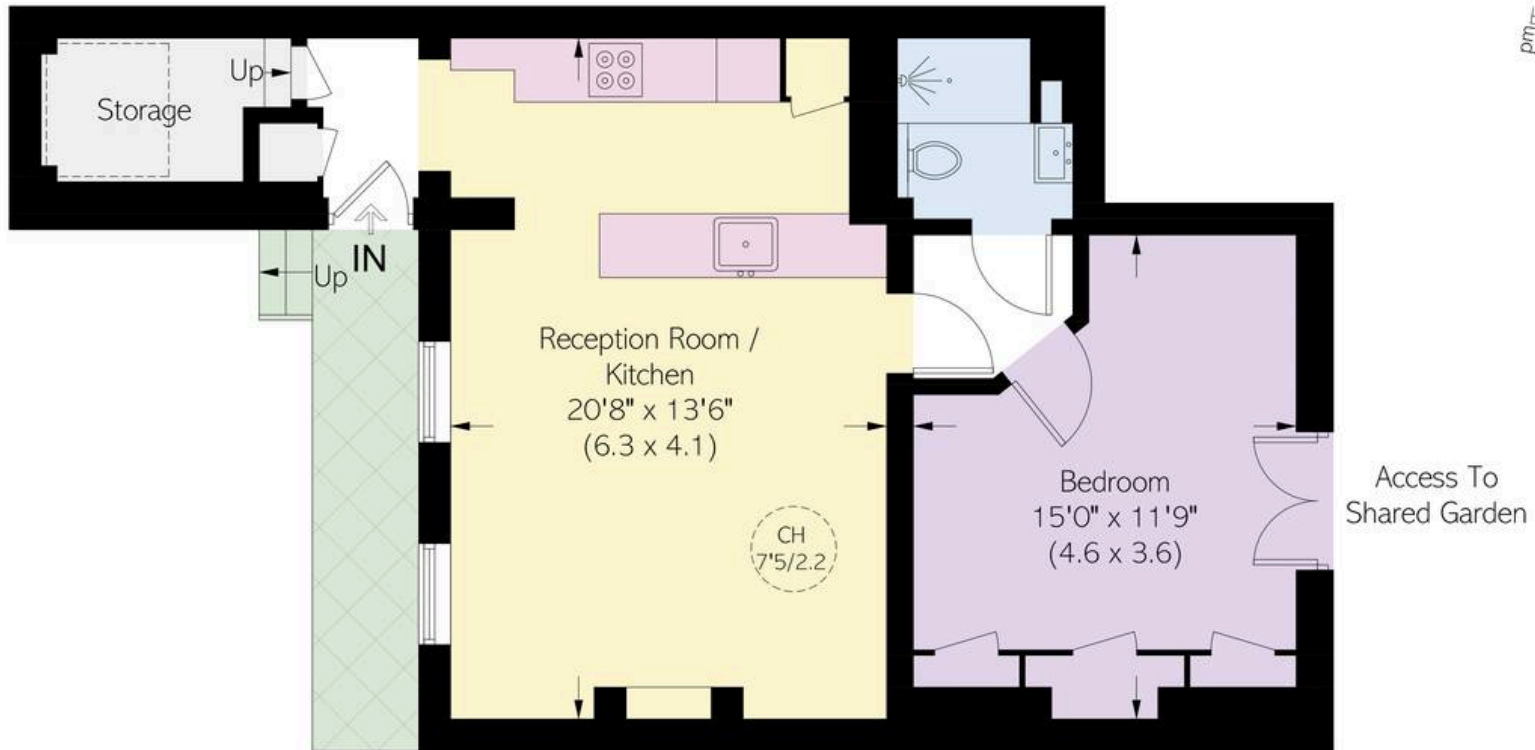
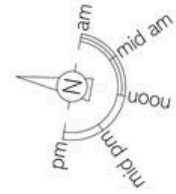
Approximate area
571 sq ft / 53.1 sq m

Including limited use area
(34 sq ft / 3.2 sq m)

Approximate external area
57 sq ft / 5.3 sq m

This plan is for layout guidance only. Not drawn to scale unless stated. Windows and door openings are approximate. Whilst every care is taken in the preparation of this plan, please check all dimensions, shapes, and compass bearings before making any decisions reliant upon them.

 = Reduced head height below 1.5m



Lower Ground Floor

**RUSSELL
SIMPSON**

Contact Us

+44 (0) 20 7225 0277

Contact us

info@russellsimpson.co.uk

Sydney Street

+44 (0) 20 7225 0277

151A Sydney Street

London

SW3 6NT

chelsea@russellsimpson.co.uk

Kensington Square

+44 (0) 20 3761 9691

13 Kensington Square

London

W8 5HD

kensington@russellsimpson.co.uk