



## **RUSSELL SIMPSON**

A very special, three-bedroom family house on Hasker Street, a sought after one-way street between Chelsea and Knightsbridge

HASKER STREET  
CHELSEA SW3

# Hasker Street

£2,495 P/W

BEDROOMS 3	INTERNAL 1,623 <small>SQ FT</small>	OUTDOOR 309 <small>SQ FT</small>	FURNISHED STATUS Furnished / Unfurnished
BATHROOMS 3	150 <small>SQM</small>	EPC D	COUNCIL TAX RBKC, H



## The Property

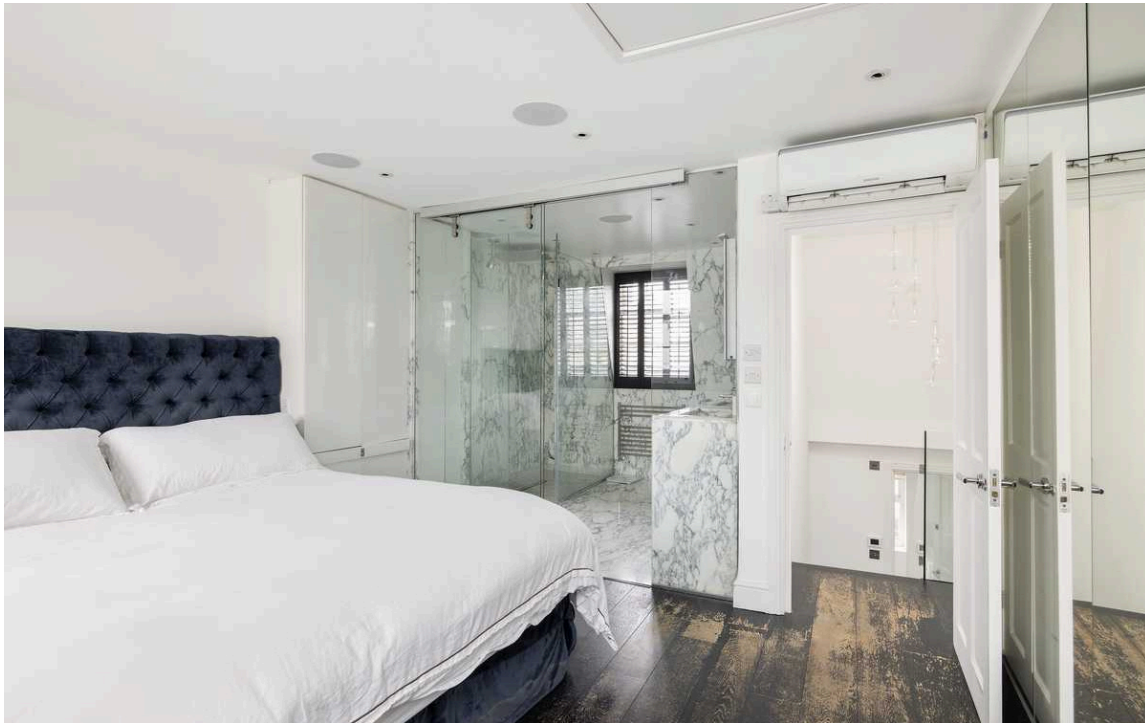
The house is very sensibly laid out, with a large open-plan reception and dining room on the ground floor, that leads out onto an attractive terrace that looks out over the garden below.



## Indoor Spaces

The lower-ground floor contains a well-appointed kitchen, alongside a space that could be used as a dining area, second reception room or study. This leads out onto a picturesque garden. On the half-landings for the ground and first floor is a well organised bath, and shower room.





## The Bedrooms

On the first floor are two, spacious double bedrooms, both containing excellent built-in storage, while the principal bedroom is on the top floor and it benefits from superb inbuilt storage of its own, an ensuite shower room and a television that descends from the roof. There is a high quality built in sound system throughout the house.



## The Neighbourhood

Hasker Street is superbly positioned for the shops, bars and restaurants of both Chelsea and Knightsbridge. Positioned in the 'golden triangle' of SW3, this was historically market gardens and parkland. Residential development in the area started in the early 1800s and has continued leaving the area dominated by a range of attractive Victorian and Georgian terraced houses. Hasker Street is a short walk from South Kensington, Sloane Square and Knightsbridge underground stations giving you access to excellent tube links across London.



# Hasker Street SW3

**Approximate area**  
150.8 sq m / 1623 sq ft  
(Including Vault / Excluding Void)

**Including limited use area**  
(1.0 sq m / 11 sq ft)

**Approximate external area**  
28.7 sq m / 309 sq ft

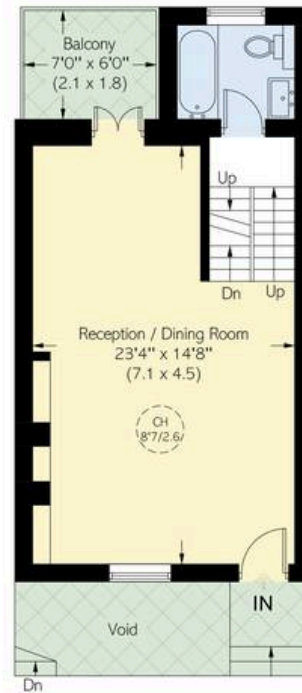
## RUSSELL SIMPSON

This plan is for layout guidance only. Not drawn to scale unless stated. Windows and door openings are approximate. Whilst every care is taken in the preparation of this plan, please check all dimensions, shapes, and compass bearings before making any decisions reliant upon them.

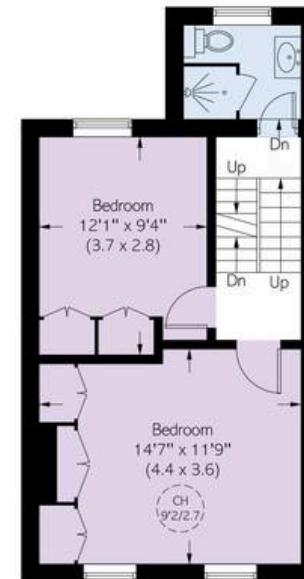


Lower Ground Floor

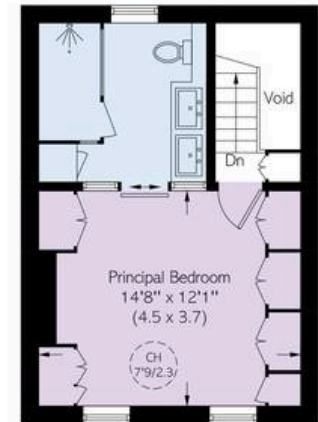
- External Area



Ground Floor



First Floor



Second Floor

**RUSSELL  
SIMPSON**

---

## Contact Us

+44 (0) 20 7225 0277

Contact us

[info@russellsimpson.co.uk](mailto:info@russellsimpson.co.uk)

---

## Sydney Street

+44 (0) 20 7225 0277

151A Sydney Street

London

SW3 6NT

[chelsea@russellsimpson.co.uk](mailto:chelsea@russellsimpson.co.uk)

---

## Kensington Square

+44 (0) 20 3761 9691

13 Kensington Square

London

W8 5HD

[kensington@russellsimpson.co.uk](mailto:kensington@russellsimpson.co.uk)