



## **RUSSELL SIMPSON**

Carefully designed flat to rent with  
access to pool, gym, and sauna  
inclusive of all bills

HARRINGTON GARDENS  
GLOUCESTER ROAD SW7

# Harrington Gardens

£1,175 P/W

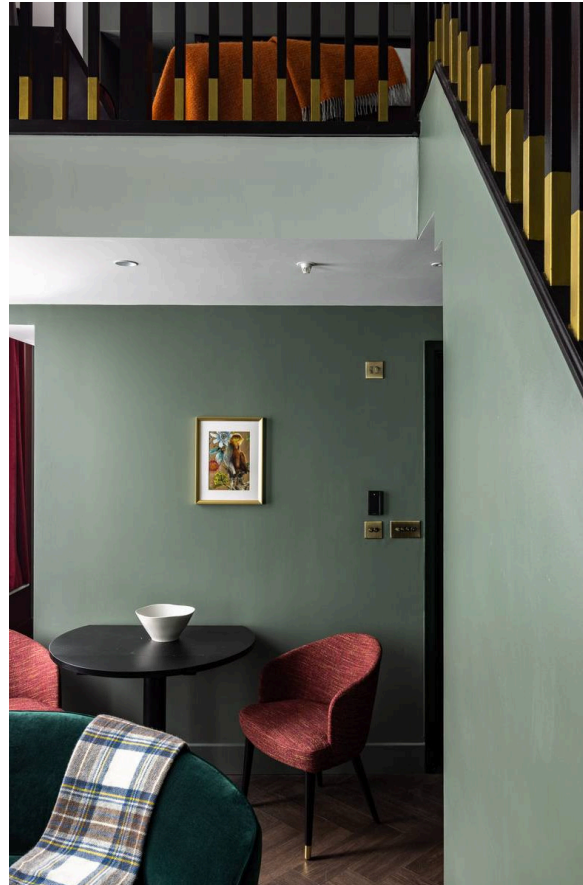
BEDROOMS 1	INTERNAL 407 <small>SQ FT</small>	OUTDOOR —	FURNISHED STATUS Furnished
BATHROOMS 1	37 <small>SQM</small>	EPC —	COUNCIL TAX —



# The Property

One-bedroom flat with tasteful interiors in an exclusive apartment building close to Gloucester Road underground station

Entering the flat on the first floor, the door opens directly onto a spacious reception room. This includes an open-plan kitchen, as well as enough space for separate dining and seating areas. In addition, this floor contains a bathroom with a shower.



img 1

Seating Area



## Indoor Spaces

Upstairs is a mezzanine containing a bedroom with inbuilt storage. Meanwhile, high ceilings and tall windows give an added sense of space.

---

img 1

Bedroom

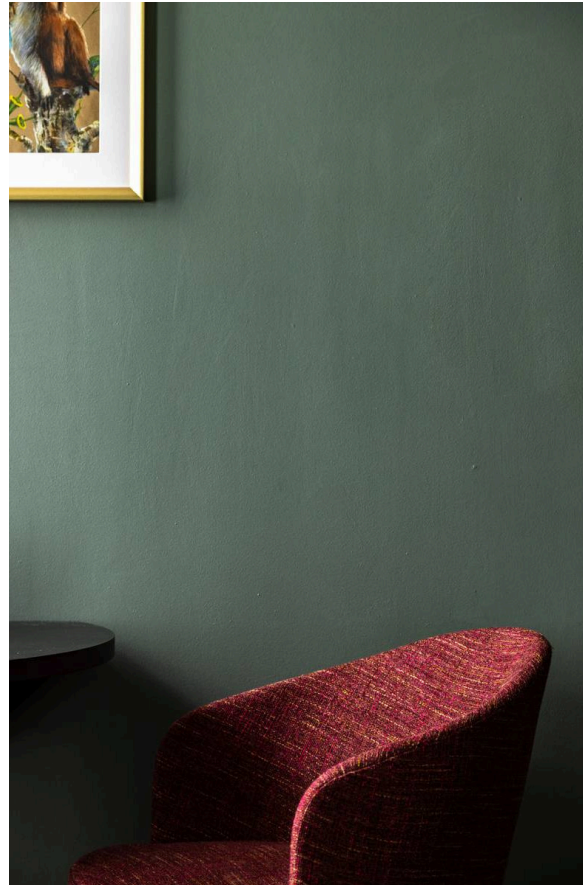
img 2

Bathroom



## The Design

The property has been designed in a contemporary fashion, with bold colours and varied materials adding to the sense of style. There is also air conditioning throughout.





## Private Club

The Other House occupies a grand terrace of refurbished townhouses. It contains a mix of serviced apartments and residents' flats, and provides automatic membership of the building's private club. This includes members' lounges, a pool, a gym, a sauna, a steam room, a wellness studio and a curated calendar of events. All bills are included in the rent, giving added convenience.

---

img 1

Courtyard

img 2

Swimming Pool





## The Neighbourhood

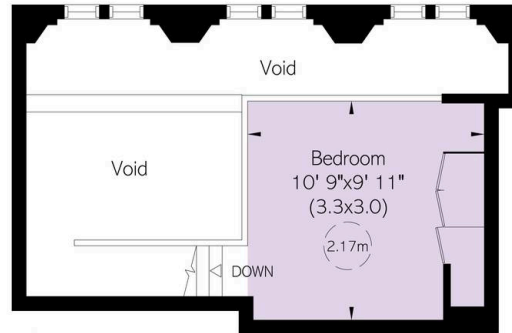
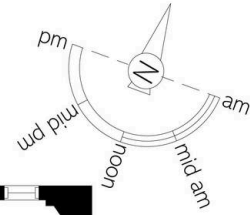
The Other House is located in the heart of South Kensington, moments away from Gloucester Road underground station. From here, the restaurants and shops of Chelsea and Kensington High Street are both within walking distance. In addition, the world-class cultural institutions of South Kensington are close, while Hyde Park and Kensington Gardens are also nearby.



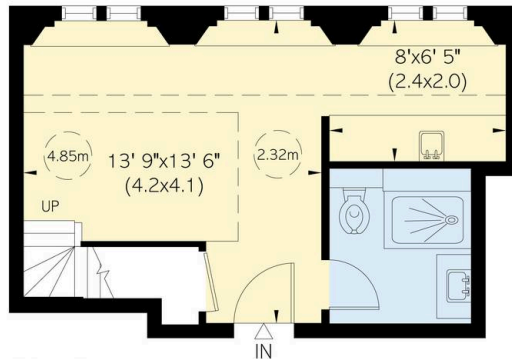
De Morgan, Harrington Gardens, **RUSSELL SIMPSON**  
SW7

**Approximate Internal Area**  
407 sq ft / 38 sq m

This plan is for layout guidance only. Not drawn to scale unless stated. Windows and door openings are approximate. Whilst every care is taken in the preparation of this plan, please check all dimensions, shapes, and compass bearings before making any decisions reliant upon them.



Mezzanine



First Floor

**RUSSELL  
SIMPSON**

---

## Contact Us

+44 (0) 20 7225 0277

151A Sydney Street  
London  
SW3 6NT

[chelsea@russellsimpson.co.uk](mailto:chelsea@russellsimpson.co.uk)