



## **RUSSELL SIMPSON**

Beautifully designed and decorated  
one-bedroom flat with exceptionally  
high ceilings to rent

HARLEY STREET  
MARYLEBONE W1G

Harley Street

£2,765 <sub>P/W</sub>

BEDROOMS 1	INTERNAL  679 <sub>SQ FT</sub>  63 <sub>SQM</sub>	OUTDOOR  —	FURNISHED STATUS  Furnished
BATHROOMS 1		EPC C	COUNCIL TAX Westminster City, E

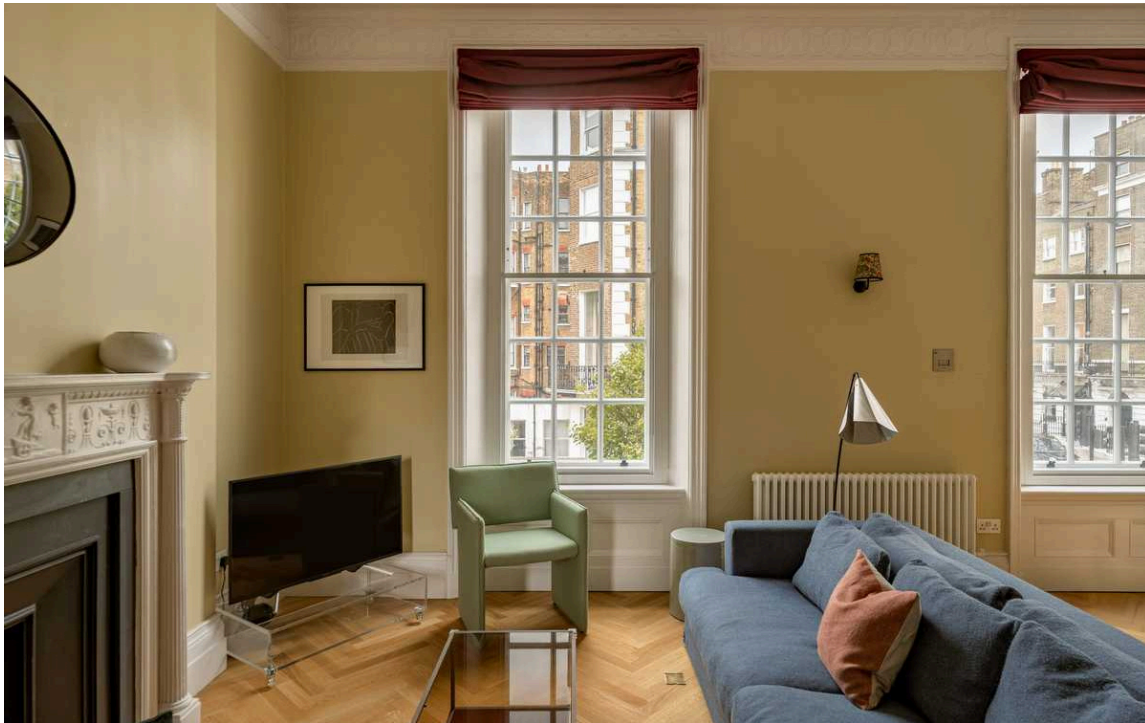


## The Property

Impressive first-floor flat with elegant interiors in a grand building close to Marylebone High Street

The flat is part of an impressive red-brick townhouse on Harley Street with a porter. In addition, the flat provides high speed wireless broadband, 24 hour CCTV, high quality linen, welcome provisions on arrival and a housekeeping service. All utilities are included.

Please note prices are subject to VAT. This drops from 20% to 4% after 28 nights.

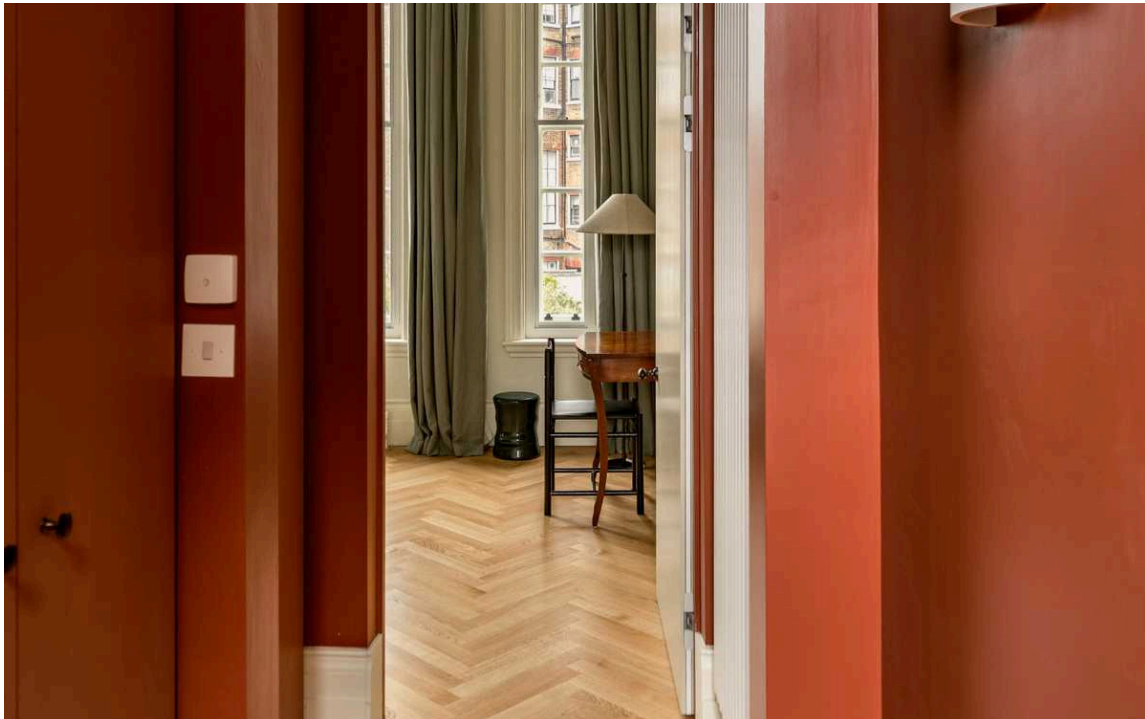


## Indoor Spaces

Entering the flat on the first floor, the front hall opens onto a generous reception room. This bright and beautiful space includes an open-plan kitchen, as well as separate dining and seating areas.

The flat also features a bedroom with inbuilt wardrobes, a bathroom with a bath and further storage space in the hall.

The flat has been beautifully decorated and is presented in good condition. High ceilings, tall windows and wooden floors add to the sense of light and space, while an ornate cornice emphasises the elegance of the interiors.



## The Neighbourhood

The property is exceptionally well-located. From here, Marylebone High Street is close, with an excellent range of restaurants and shops. Baker Street and Bond Street stations are also nearby, while the open spaces of Regent's Park are a short walk away.

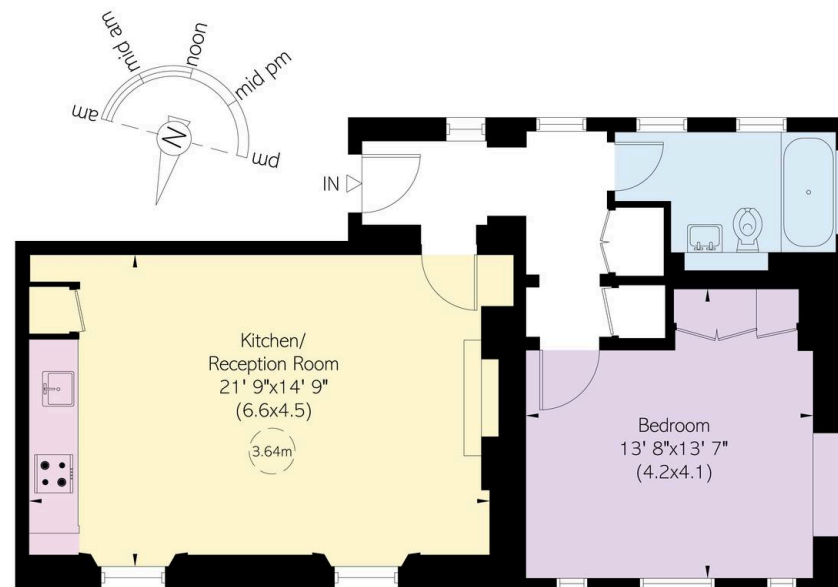


Harley Street, W1

**RUSSELL  
SIMPSON**

**Approximate Internal Area**  
679 sq ft/ 63 sq m

This plan is for layout guidance only. Not drawn to scale unless stated. Windows and door openings are approximate. Whilst every care is taken in the preparation of this plan, please check all dimensions, shapes, and compass bearings before making any decisions reliant upon them.



First Floor

**RUSSELL  
SIMPSON**

---

## Contact Us

+44 (0) 20 3761 9691

[mayfair@russellsimpson.co.uk](mailto:mayfair@russellsimpson.co.uk)

In accordance with the Property Mis-Description Act 1991, the following details have been prepared in good faith, and are not intended to constitute part of an offer or contract. Any information contained herein (whether in the text, plans or photographs) is given in good faith but should not be relied upon as being a statement of representation of fact. Nothing in these Particulars shall be deemed to be a statement that the property is in good condition or otherwise nor that any services or facilities are in good working order. Any measurements of distances referred to herein are approximate only. October 2021