



**RUSSELL  
SIMPSON**

Harcourt Terrace

HARCOURT TERRACE  
THE BOLTONS SW10

# Harcourt Terrace

# Let

BEDROOMS 1	INTERNAL  531 SQ FT  49 SQM	OUTDOOR —	FURNISHED STATUS —
BATHROOMS 1		EPC C	COUNCIL TAX —



## The Property

A lateral one bedroom flat located on the second floor of a beautiful stucco fronted building in West Chelsea.

It is well-proportioned and in immaculate condition having been recently refurbished. Measuring 531 Square Feet, the apartment offers a superb open plan living and an ample sized bedroom. There is great light throughout and lovely views onto Redcliffe Mews. The flat benefits from being less than 50 metres away from the quiet, tree-lined square of Redcliffe Square Gardens.

Harcourt Terrace is a sought-after address, ideally located between the Fulham Road and just west of the Boltons. It is well situated and positioned close to many shops, bars, and restaurants on Fulham Road. Earls Court and Gloucester Road Underground stations are close by.

The property is available on an furnished basis.



---

img 1

Picture No. 11

img 2

Picture No. 17

# Harcourt Terrace, SW10

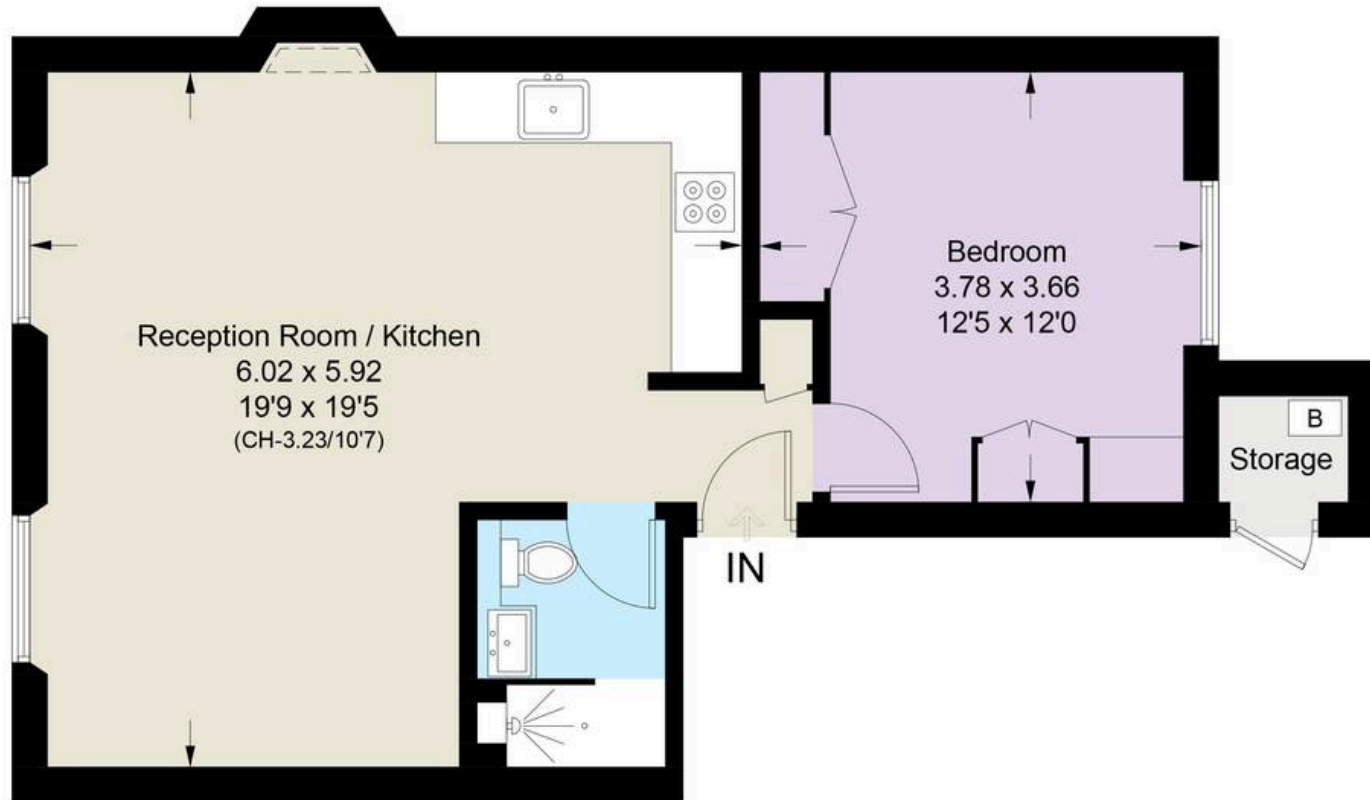
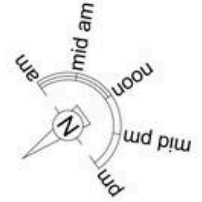
Approximate Area = 48.2 sq m / 519 sq ft

Storage = 1.1 sq m / 12 sq ft

Total = 49.3 sq m / 531 sq ft

Including Limited Use Area (0.4 sq m / 4 sq ft)

 = Reduce head height below 1.5m



## Second Floor

This plan is for layout guidance only. Not drawn to scale unless stated. Windows and door openings are approximate. Whilst every care is taken in the preparation of this plan, please check all dimensions, shapes and compass bearings before making any decisions reliant upon them. (ID710948)

# Harcourt Terrace, SW10

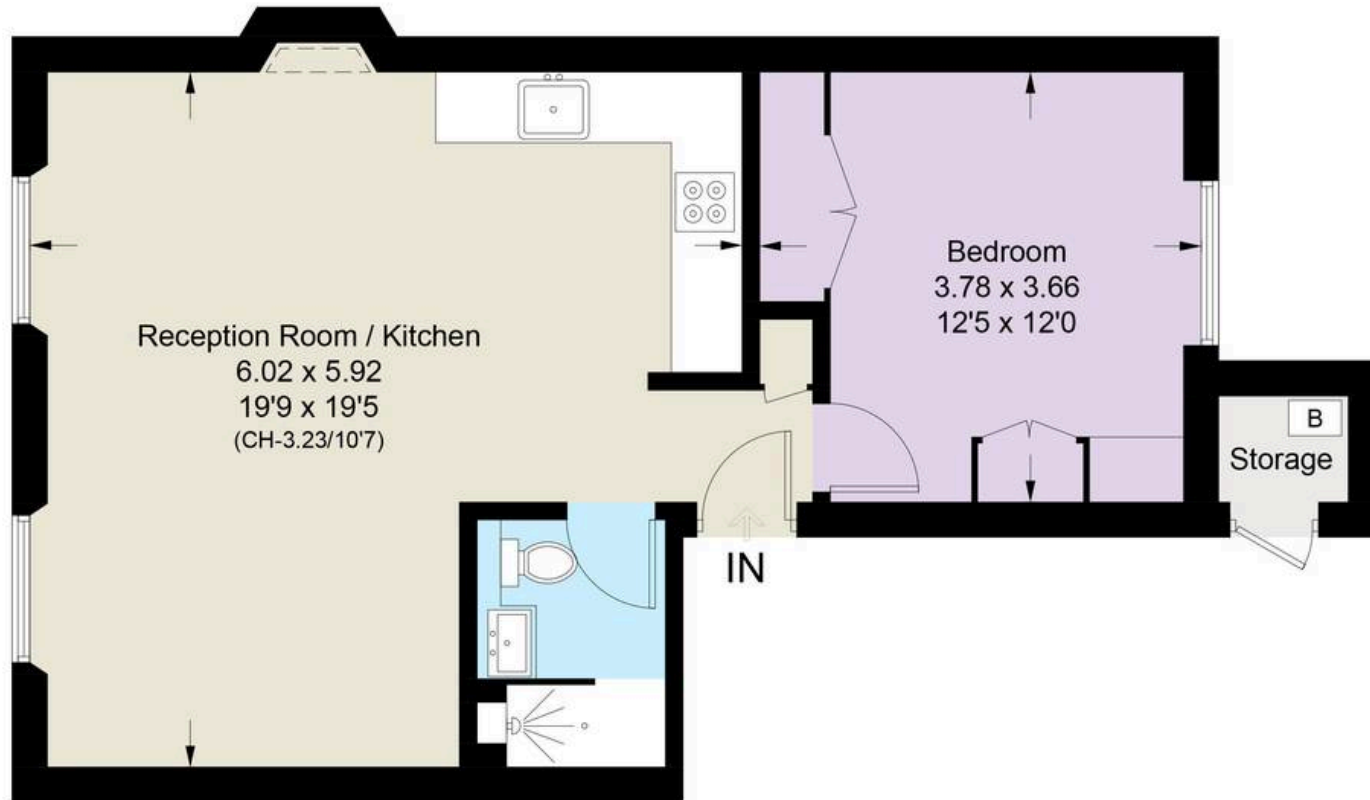
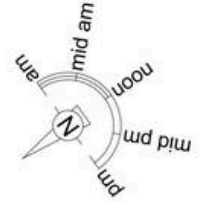
Approximate Area = 48.2 sq m / 519 sq ft

Storage = 1.1 sq m / 12 sq ft

Total = 49.3 sq m / 531 sq ft

Including Limited Use Area (0.4 sq m / 4 sq ft)

 = Reduce head height below 1.5m



## Second Floor

This plan is for layout guidance only. Not drawn to scale unless stated. Windows and door openings are approximate. Whilst every care is taken in the preparation of this plan, please check all dimensions, shapes and compass bearings before making any decisions reliant upon them. (ID710948)

**RUSSELL  
SIMPSON**

---

## Contact Us

+44 (0) 20 7225 0277

Contact us

[info@russellsimpson.co.uk](mailto:info@russellsimpson.co.uk)

---

## Sydney Street

+44 (0) 20 7225 0277

151A Sydney Street

London

SW3 6NT

[chelsea@russellsimpson.co.uk](mailto:chelsea@russellsimpson.co.uk)

---

## Kensington Square

+44 (0) 20 3761 9691

13 Kensington Square

London

W8 5HD

[kensington@russellsimpson.co.uk](mailto:kensington@russellsimpson.co.uk)