



## **RUSSELL SIMPSON**

Artistic house in Chelsea with bright  
and spacious interiors to rent

GUNTER GROVE  
WEST CHELSEA SW10

# Gunter Grove

£2,940 P/W

BEDROOMS 3	INTERNAL 1,182 <small>SQ FT</small>	OUTDOOR 129 <small>SQ FT</small>	FURNISHED STATUS Furnished
BATHROOMS 2	109 <small>SQM</small>	EPC C	COUNCIL TAX G



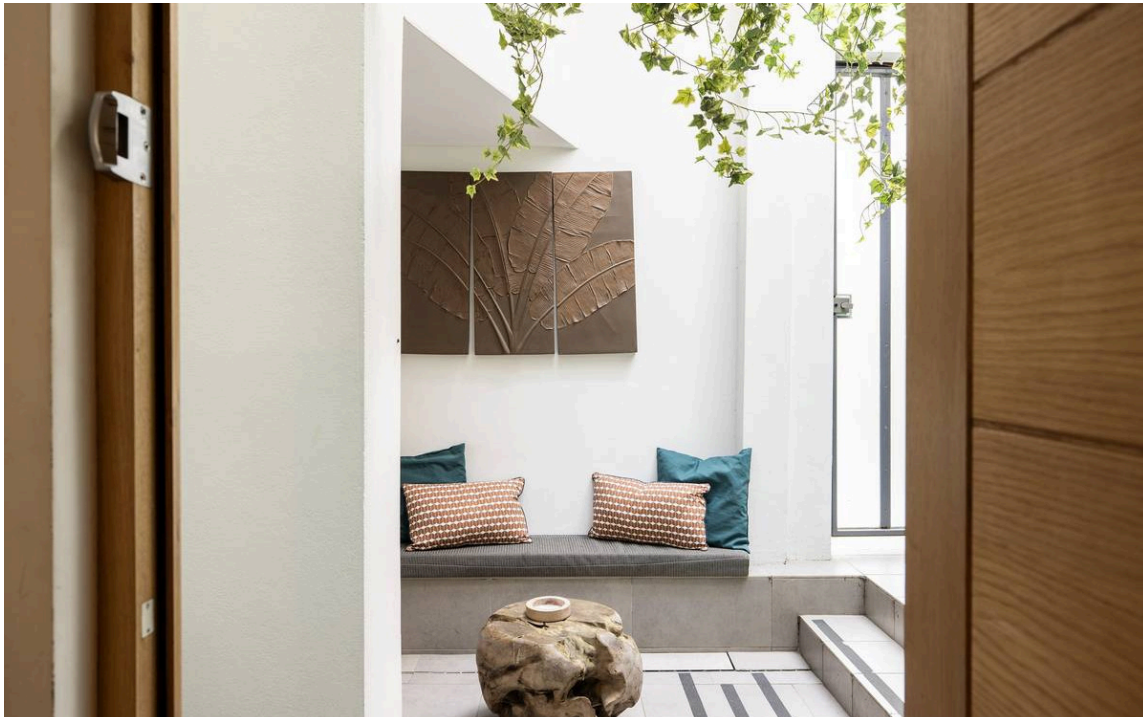
## The Property

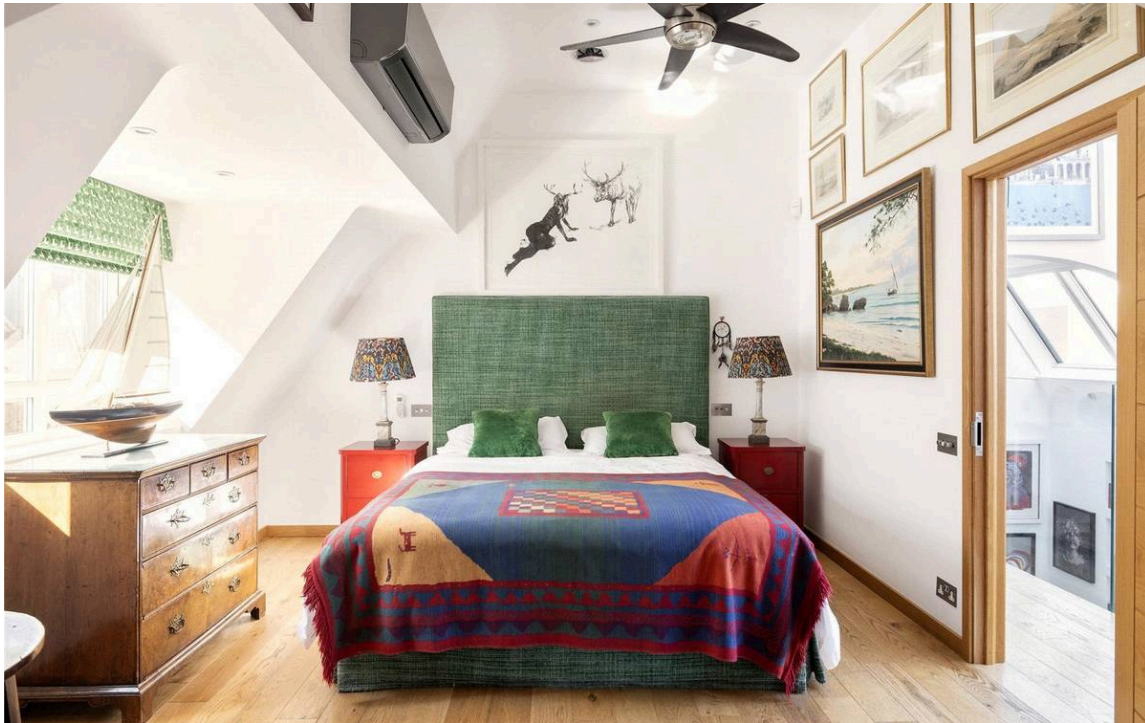
Characterful three bedroom house with creative past moments away from the Fulham Road



## Indoor Spaces

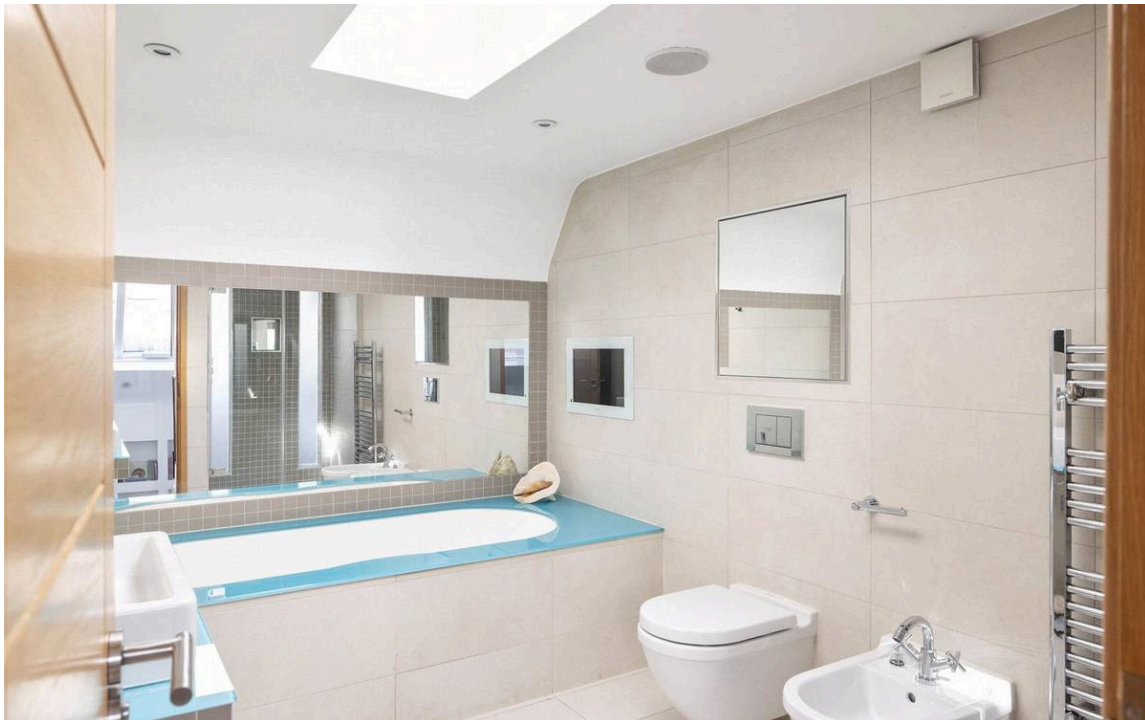
Entering the house on the ground floor, the front door leads directly into a large reception room. This includes an open-plan kitchen with a central island and breakfast bar, as well as separate dining and seating areas. The room has a wonderful sense of brightness and space thanks to overhead skylights and a double-height roof above the seating area. In addition, this floor contains a bedroom with an ensuite bathroom and a guest WC.





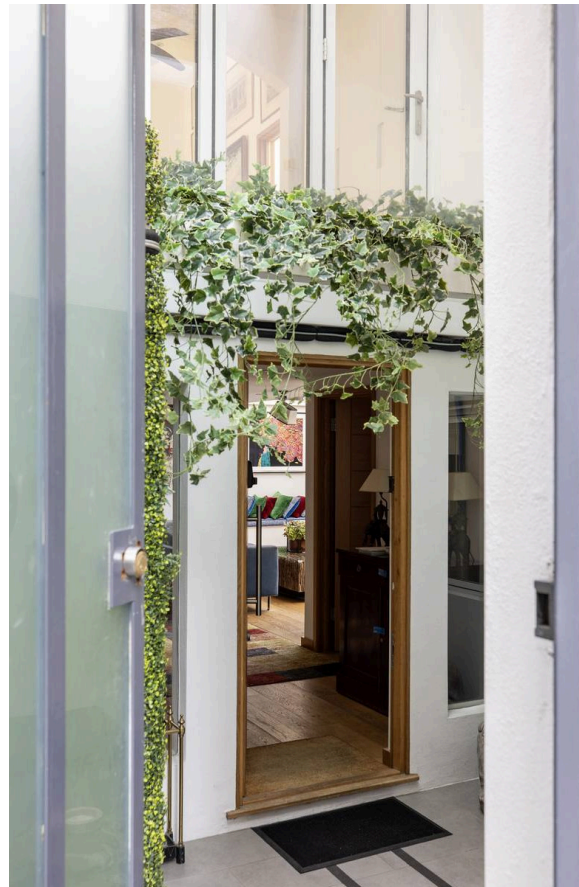
## The Bedrooms

Upstairs, on the first floor, are two more bedrooms and a well-proportioned bathroom. Both rooms contain inbuilt storage, and the larger has access to a balcony.



## The Design

The interiors are designed in a contemporary style, and the property has air conditioning and underfloor heating throughout. It was previously owned by a musician and still preserves a creative atmosphere.





## Outdoor Spaces & The Neighbourhood

The house includes a ground-floor entrance courtyard with outdoor seating, as well as a first-floor balcony. What's more, it is set back from the street behind another property, giving added privacy.

Gunter Grove is an attractive street lined with a mix of semi-detached and terrace houses with stucco bases and dressings. From here, the restaurants and shops of the Fulham Road are close, as well as Fulham Broadway underground station. In addition, Crenmore Gardens and the River Thames are within easy reach.

## Gunter Grove, SW10

**Approximate area**  
109.8 sq m / 1182 sq ft

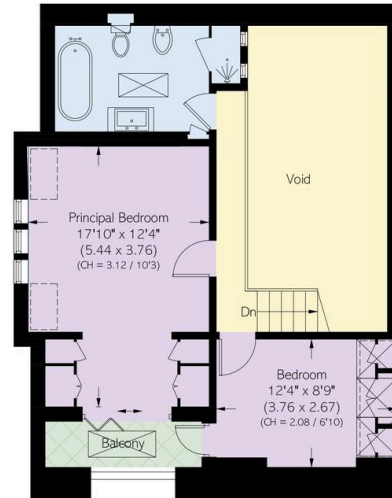
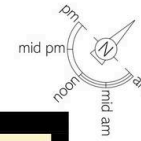
**Including limited use area**  
(5.2 sq m / 56 sq ft)

**Approximate external area**  
12.1 sq m / 130 sq ft

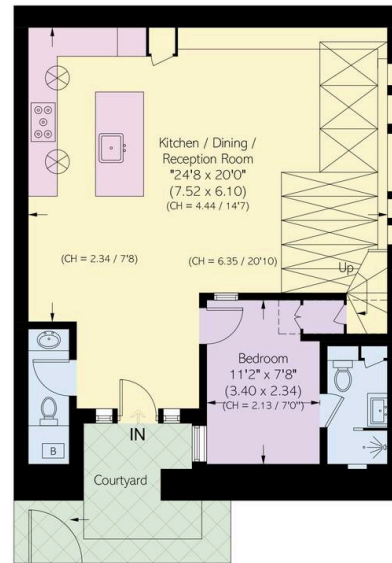
**RUSSELL  
SIMPSON**

This plan is for layout guidance only.  
Not drawn to scale unless stated. Windows  
and door openings are approximate. Whilst  
every care is taken in the preparation of this  
plan, please check all dimensions, shapes,  
and compass bearings before making any  
decisions reliant upon them.

☐ = Reduced head height below 1.5m



First Floor



Ground Floor



**RUSSELL  
SIMPSON**

---

## Contact Us

+44 (0) 20 7225 0277

Contact us

[info@russellsimpson.co.uk](mailto:info@russellsimpson.co.uk)

---

## Sydney Street

+44 (0) 20 7225 0277

151A Sydney Street  
London  
SW3 6NT

[chelsea@russellsimpson.co.uk](mailto:chelsea@russellsimpson.co.uk)

---

## Kensington Square

+44 (0) 20 3761 9691

13 Kensington Square  
London  
W8 5HD

[kensington@russellsimpson.co.uk](mailto:kensington@russellsimpson.co.uk)