



## **RUSSELL SIMPSON**

Secluded Kensington house with  
roof terrace and off-street parking  
to rent

GREGORY PLACE  
KENSINGTON W8

# Gregory Place

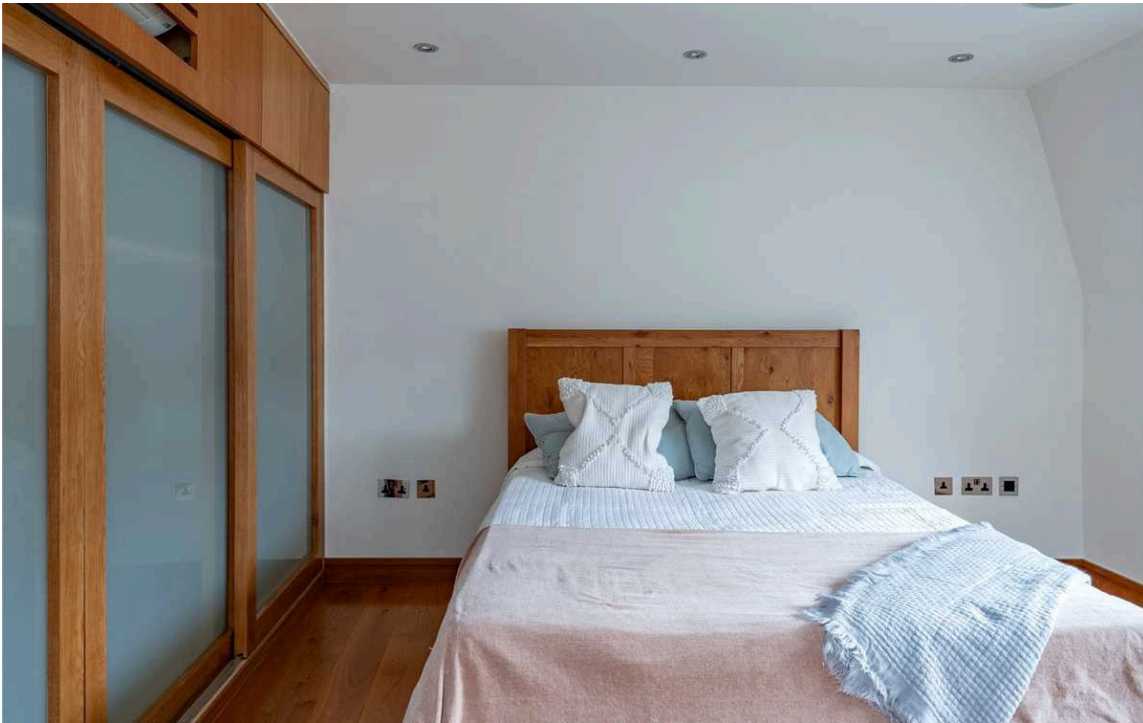
# Let

BEDROOMS 4	INTERNAL 2,206 SQ FT	OUTDOOR 178 SQ FT	FURNISHED STATUS Unfurnished
BATHROOMS 4	204 SQM	EPC C	COUNCIL TAX RBKC, H



## The Property

Entering the house on the ground floor, the entrance hall leads through to a spacious open-plan kitchen with a dining area. In addition, a striking open-riser staircase connects the different levels of the property.



## The Bedrooms

The first floor features a principal bedroom with ensuite bathroom and built-in storage space. There is also a well-proportioned reception room with south- and west-facing windows, bringing in brightness for much of the day. The second floor contains two more bedrooms, both ensuite.

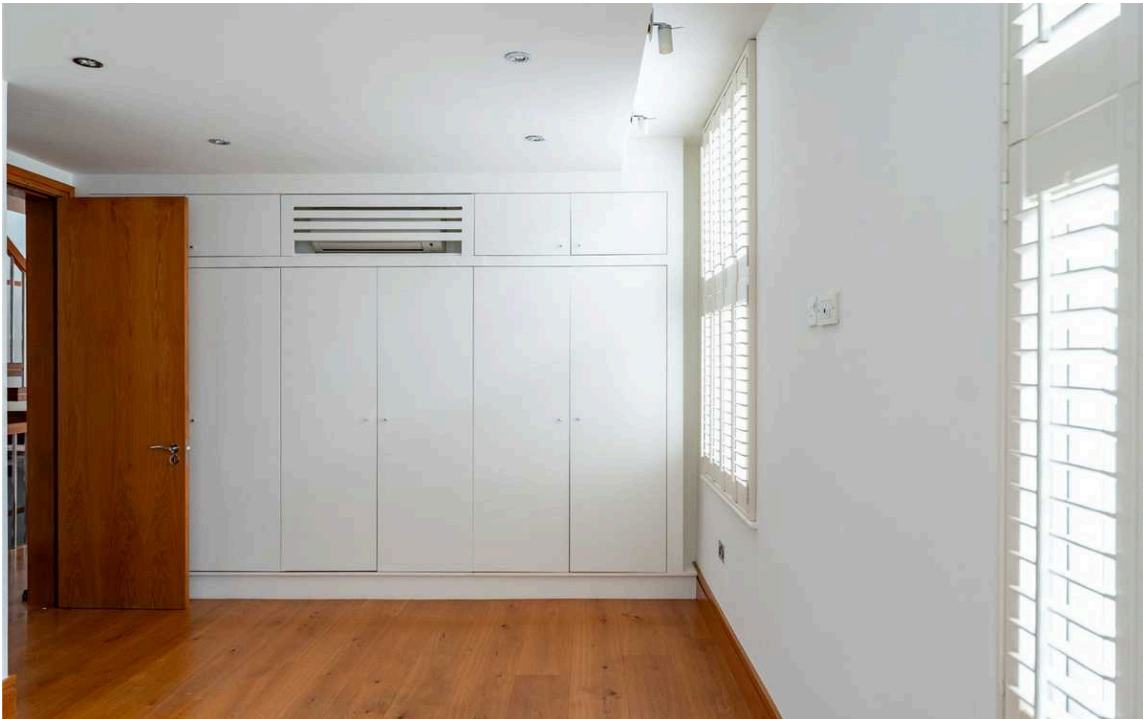
---

img 1

Principal Bedroom

img 2

Bedroom





## Indoor Spaces

The lower ground floor contains a bedroom with ensuite bathroom and French doors leading out onto a patio. In addition, it contains a utility room with additional storage space.

---

img 1

Kitchen CGI Image

img 2

Reception Room CGI Image



# The Design

The house is designed in a contemporary style, creating spacious and sophisticated interiors. It is presented in good condition, with wooden floors and air conditioning.



## Outdoor Spaces & The Neighbourhood

The property includes a roof terrace with wooden decking and enough space for outdoor dining. In addition, it has spectacular views of the nearby St Mary Abbots Church, designed by the celebrated gothic architect Sir George Gilbert Scott. The ground floor contains a garage with off-street parking.

Gregory Place is a quiet, mews-like street in the heart of Kensington. From here, the restaurants and shops of Kensington High Street are close, and so too the underground station. In addition, the open spaces of Kensington Gardens and Hyde Park are a short walk away.



## Gregory Place, W8

**RUSSELL  
SIMPSON**

**Approximate Internal Area**

2,206 sq ft/ 205 sq m

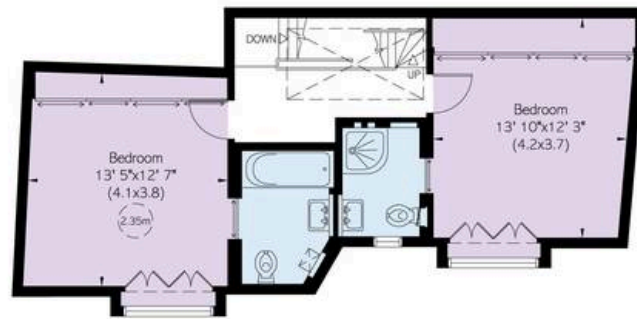
**Including limited use area, garage  
and locked estimated area**

179 sq ft/ 17 sq m

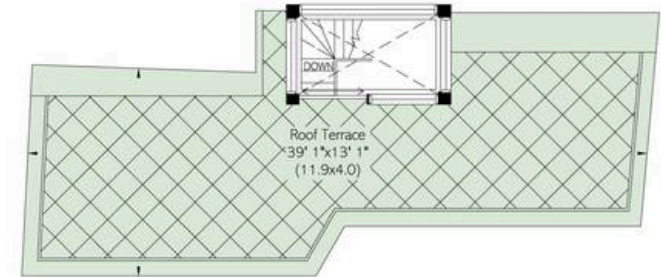
**Outside Area**

476 sq ft/ 44 sq m

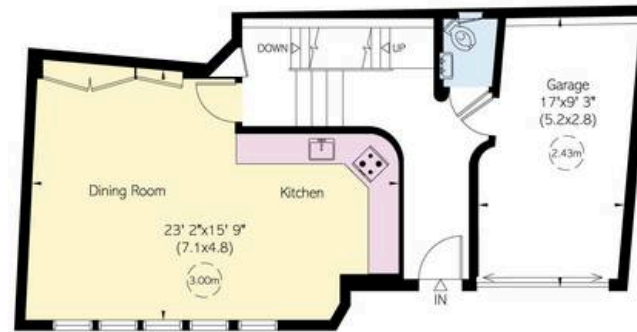
This plan is for layout guidance only. Not drawn to scale unless stated. Windows and door openings are approximate. Whilst every care is taken in the preparation of this plan, please check all dimensions, shapes, and compass bearings before making any decisions reliant upon them.



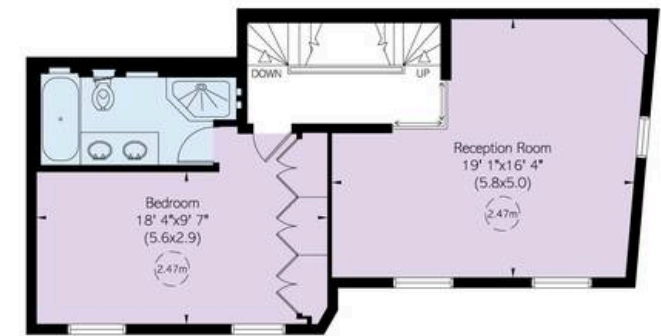
Second Floor



Lower Ground Floor



Ground Floor



First Floor



**RUSSELL  
SIMPSON**

---

## Contact Us

+44 (0) 20 3761 9691

13 Kensington Square  
London  
W8 5HD

[kensington@russellsimpson.co.uk](mailto:kensington@russellsimpson.co.uk)