



RUSSELL SIMPSON

Sophisticated two-bedroom flat with
south-facing terrace to rent near
Oxford Street

GREEN STREET
MAYFAIR W1K

Green Street

£2,500 _{P/W}

<div>BEDROOMS</div> <div>2</div>	<div>INTERNAL</div> <div>952 _{SQ FT}</div> <div>88 _{SQM}</div>	<div>OUTDOOR</div> <div>41 _{SQ FT}</div>	<div>FURNISHED STATUS</div> <div>Furnished</div>
<div>BATHROOMS</div> <div>2</div>		<div>EPC</div> <div>C</div>	<div>COUNCIL TAX</div> <div>Westminster City, G</div>



The Property

Convenient flat with contemporary interiors in a beautifully restored building close to Hyde Park



Indoor Spaces

Stepping into the flat on the second floor, the front hall leads into a well-proportioned living area. This includes an open-plan kitchen with fitted units, as well as a reception room with enough space for dining and seating areas, and a wide window bringing in added light.

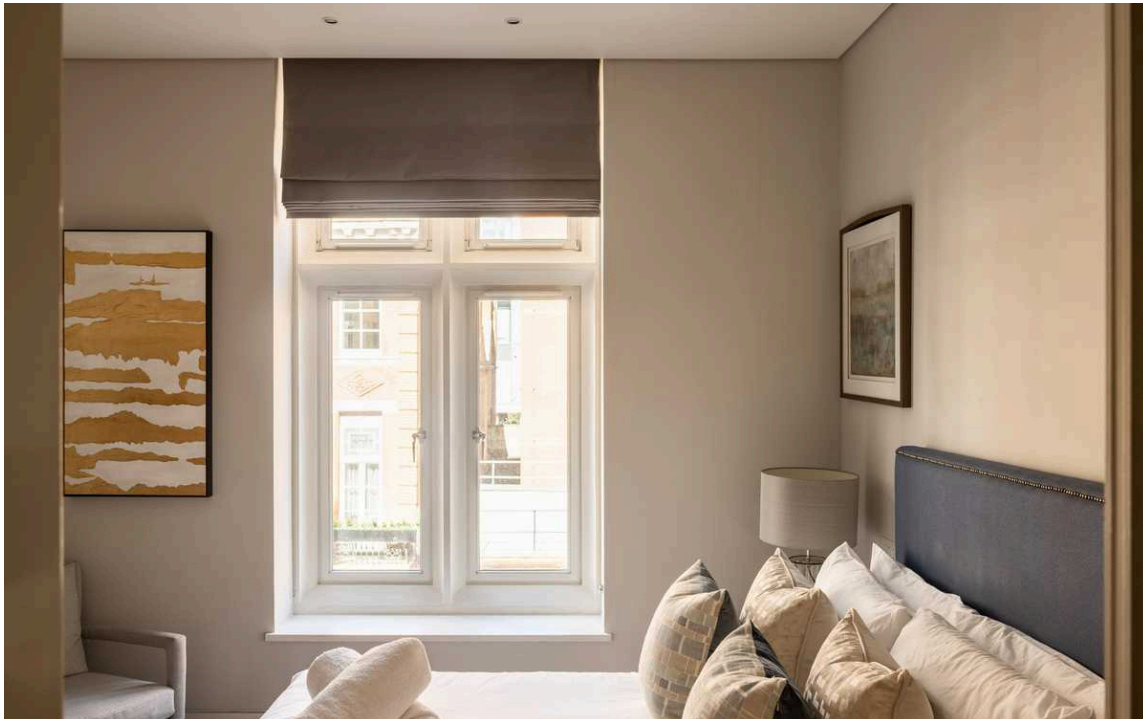




The Bedrooms

The flat also contains a pair of bedrooms, both ensuite and both with inbuilt wardrobe space. The principal bedroom also has a sliding French door that leads onto a terrace and fills this space with light.

A guest WC and further storage space in the front hall complete the property. The stylish contemporary interiors are presented in good condition, with comfort cooling throughout.



Outdoor Spaces & The Neighbourhood

The property includes a south-facing terrace with enough space for outdoor seating. It can be accessed via a lift.

The flat is part of an impressive building in the heart of Mayfair, on the corner of Green Street and Audley Street. From here, many of the neighbourhood's world-class restaurants and shops are within easy reach. Furthermore, the open spaces of Hyde Park are a short walk away.

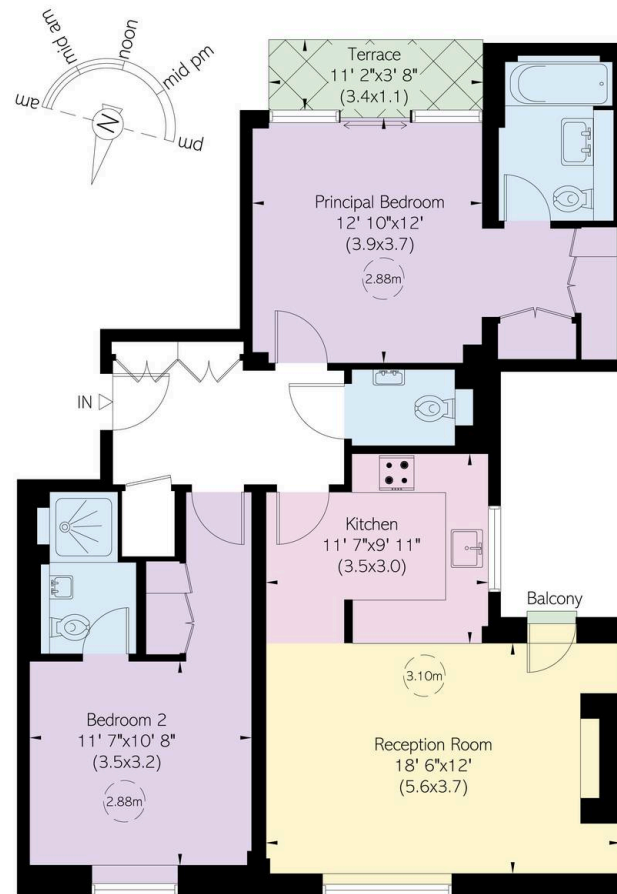
Green Street, W1

**RUSSELL
SIMPSON**

Approximate Internal Area
952 sq ft/ 88 sq m

Outside Area
42 sq ft/ 4 sq m

This plan is for layout guidance only. Not drawn to scale unless stated. Windows and door openings are approximate. Whilst every care is taken in the preparation of this plan, please check all dimensions, shapes, and compass bearings before making any decisions reliant upon them.



Second Floor

**RUSSELL
SIMPSON**

Contact Us

+44 (0) 20 3761 9691

mayfair@russellsimpson.co.uk

In accordance with the Property Mis-Description Act 1991, the following details have been prepared in good faith, and are not intended to constitute part of an offer or contract. Any information contained herein (whether in the text, plans or photographs) is given in good faith but should not be relied upon as being a statement of representation of fact. Nothing in these Particulars shall be deemed to be a statement that the property is in good condition or otherwise nor that any services or facilities are in good working order. Any measurements of distances referred to herein are approximate only. October 2021