

RUSSELL SIMPSON

Sublime and spacious flat in the
heart of Kensington

GLOUCESTER WALK
KENSINGTON W8

Gloucester Walk

£1,400 _{P/W}

BEDROOMS 1	INTERNAL 720 _{SQ FT} 66 _{SQM}	OUTDOOR —	FURNISHED STATUS Furnished
BATHROOMS 1		EPC C	COUNCIL TAX RBKC, E



The Property

One-bedroom flat with wonderful reception room in a beautiful building giving access to a communal garden square

Indoor Spaces

Entering the house on the raised ground floor, the front hall leads through to a generous reception room. This is an impressive space, with high ceilings and full-length sash windows overlooking a communal garden square. As well as separate dining and seating areas, the room opens directly onto a fitted kitchen. In addition, parquet wooden flooring and an ornate fireplace add to the sense of refinement.





The Bedroom

The bedroom is also spacious with built in wardrobe, and a pair of south-facing sash windows. A bathroom is positioned next door, while a utility cupboard and built-in storage space complete this property.





The Neighbourhood

The flat is located in a beautiful house with Dutch gables and decorative brickwork. Residents have the right to access the Sheffield Terrace garden square, a sought-after communal garden with three acres of tended grounds.

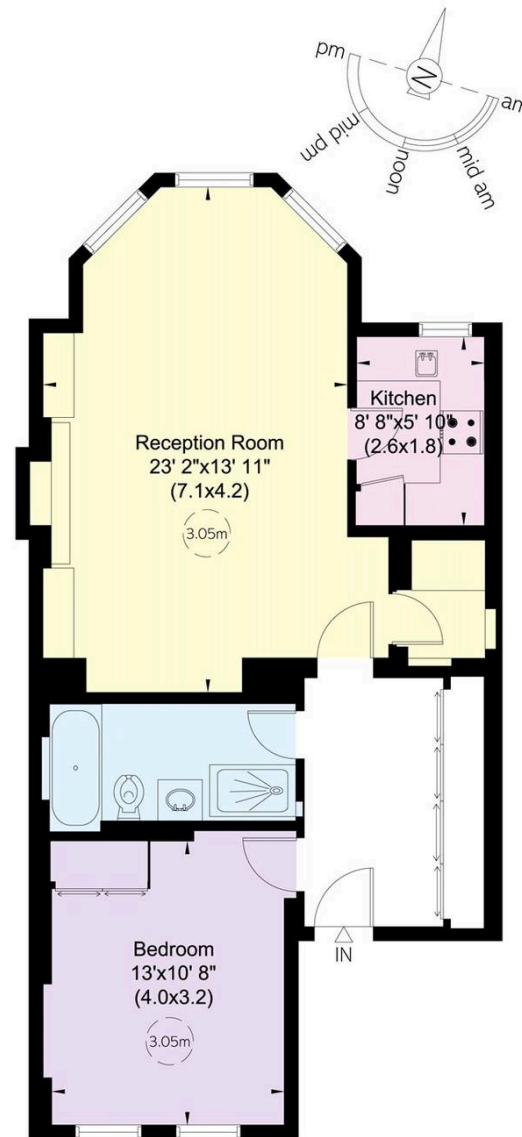
Gloucester Walk is ideally located midway between Holland Park and Kensington Gardens. From here, the many restaurants and shops of Kensington High Street are close, along with the underground station. Notting Hill Gate is also in walking distance.

Gloucester Walk, W11

Approximate Internal Area
713 sq ft/ 66 sq m

**RUSSELL
SIMPSON**

This plan is for layout guidance only.
Not drawn to scale unless stated. Windows
and door openings are approximate. Whilst
every care is taken in the preparation of this
plan, please check all dimensions, shapes,
and compass bearings before making any
decisions reliant upon them.



Ground Floor

**RUSSELL
SIMPSON**

Contact Us

+44 (0) 20 3761 9691

13 Kensington Square
London
W8 5HD

kensington@russellsimpson.co.uk