



## **RUSSELL SIMPSON**

Tastefully decorated and  
surprisingly spacious four/five-  
bedroom family home to rent in  
Chelsea

GERTRUDE STREET  
CHELSEA SW10

Gertrude Street

£3,400 <sub>P/W</sub>

<div>BEDROOMS</div> <div>4–5</div>	<div>INTERNAL</div> <div>2,800 <sub>SQ FT</sub></div> <div>260 <sub>SQM</sub></div>	<div>OUTDOOR</div> <div>889 <sub>SQ FT</sub></div>	<div>FURNISHED STATUS</div> <div>Furnished / Part Furnished</div>
<div>BATHROOMS</div> <div>4</div>		<div>EPC</div> <div>C</div>	<div>COUNCIL TAX</div> <div>RBKC, H</div>







# The Property

Bright and beautiful house near the King's Road with colourful interiors and an attractive garden

Entering the house on the raised ground floor, the front hall leads through to a generous reception room. Front and rear French doors open onto Juliet balconies, creating a double aspect and filling this space with light. Furthermore, high ceilings, wooden floors and an elegant cornice add to the impression of elegance.







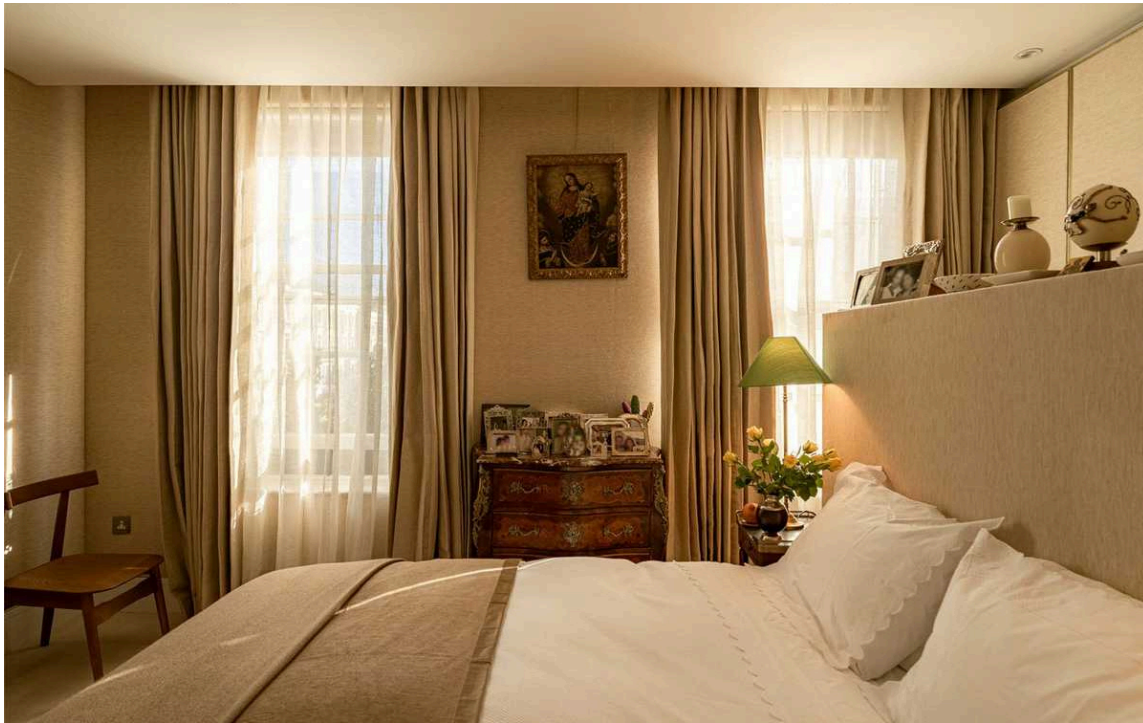
## Indoor Spaces

The lower ground floor is mostly occupied by an open-plan kitchen with fitted units, a central island and dining area. Bifolding doors open onto the patio and bring added light into the space. This floor also features a guest WC.

The basement floor contains an ensuite bedroom and a family television room that is also ensuite. Furthermore, there is a utility room and considerable storage space.

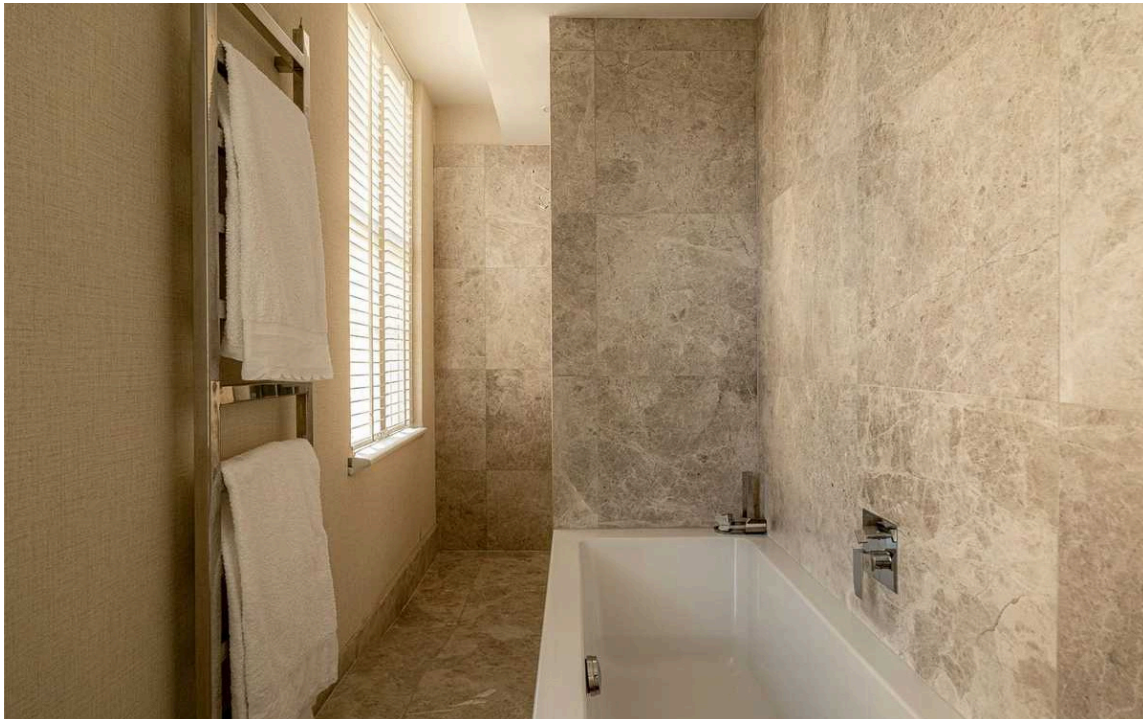






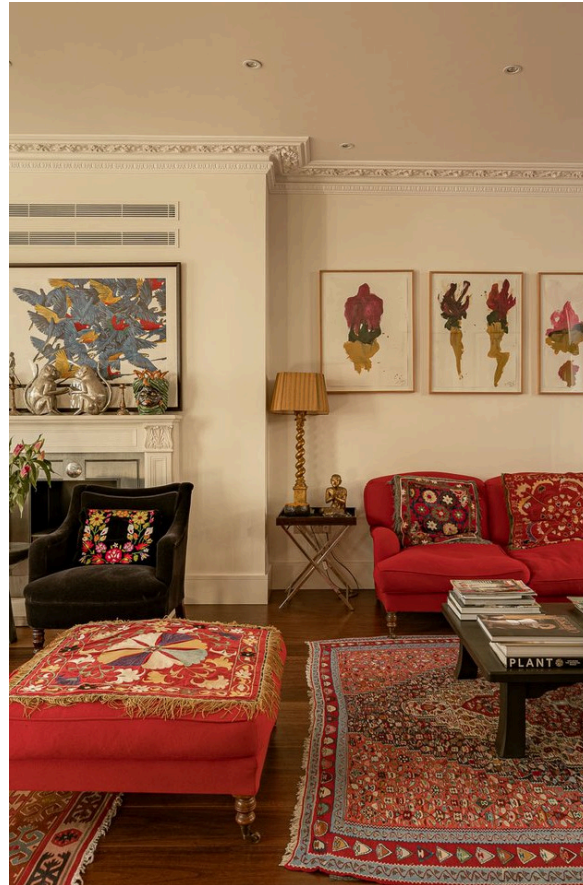
## The Bedrooms

The first floor is occupied by the principal bedroom suite, offering a bedroom, a bathroom with a bath and a walk-in wardrobe. The second floor offers two more bedrooms, sharing a bathroom.



## The Design

The property's interiors blend a colourful sense of style with comfort and convenience. This includes air conditioning and underfloor heating throughout.







## Outdoor Spaces

The property offers a paved rear garden with enough space for outdoor seating. There is also a generous patio filled with plants, creating the feel of a second garden.



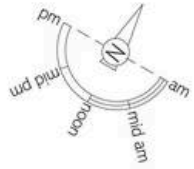




## The Neighbourhood

Gertrude Street is quiet, residential address midway between the King's Road and the Fulham Road. From here, the many restaurants, bars and shops of Chelsea are within easy reach. Imperial Wharf and Fulham Broadway stations are both in walking distance, while the Thames path is also close, providing a popular route for walking and running.





## Gertrude Street, SW10

**RUSSELL  
SIMPSON**

### Approximate Internal Area

2,800 sq ft/ 260 sq m

### Including limited use area

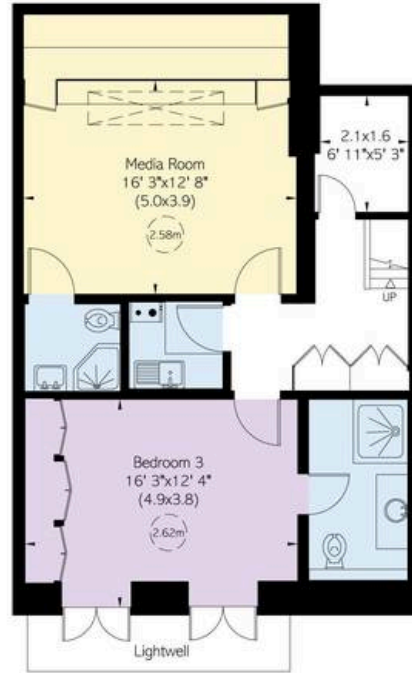
76 sq ft/ 7 sq m

### Outside Area

88g sq ft/ 8g sq m

This plan is for layout guidance only. Not drawn to scale unless stated. Windows and door openings are approximate. Whilst every care is taken in the preparation of this plan, please check all dimensions, shapes, and compass bearings before making any decisions reliant upon them.

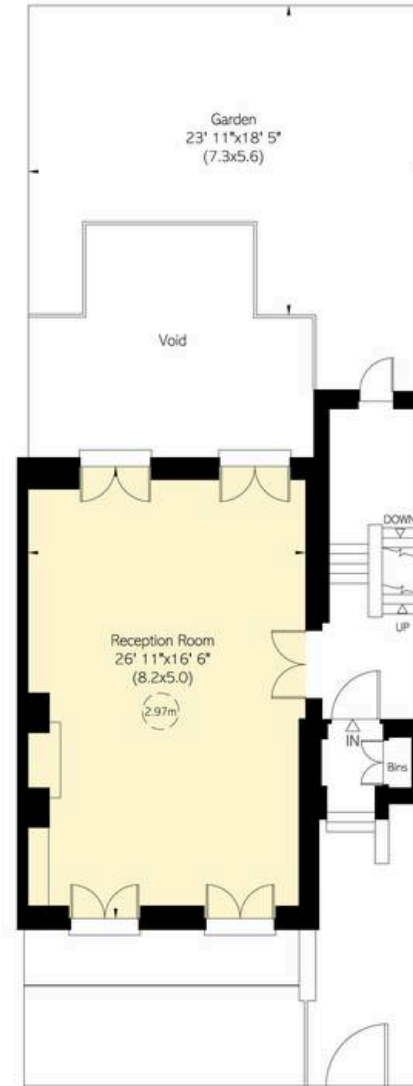
Reduced head height below 1.5m



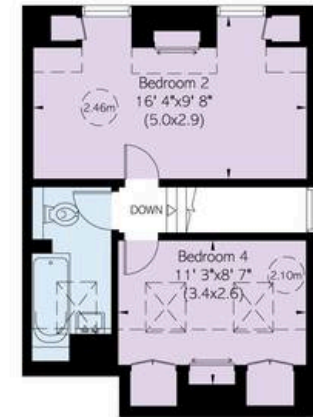
Basement



Lower Ground Floor



Upper Ground Floor



Second Floor



First Floor



**RUSSELL  
SIMPSON**

---

## Contact Us

+44 (0) 20 7225 0277

151A Sydney Street  
London  
SW3 6NT

[chelsea@russellsimpson.co.uk](mailto:chelsea@russellsimpson.co.uk)

In accordance with the Property Mis-Description Act 1991, the following details have been prepared in good faith, and are not intended to constitute part of an offer or contract. Any information contained herein (whether in the text, plans or photographs) is given in good faith but should not be relied upon as being a statement of representation of fact. Nothing in these Particulars shall be deemed to be a statement that the property is in good condition or otherwise nor that any services or facilities are in good working order. Any measurements of distances referred to herein are approximate only. October 2021