



**RUSSELL
SIMPSON**

Modern two-bedroom apartment in
Chelsea

FULHAM ROAD
CHELSEA SW3

Fulham Road

£900 P/W

<div>BEDROOMS</div> <div>2</div>	<div>INTERNAL</div> <div>669 <small>SQ FT</small></div> <div>62 <small>SQM</small></div>	<div>OUTDOOR</div> <div>—</div>	<div>FURNISHED STATUS</div> <div>Furnished / Unfurnished</div>
<div>BATHROOMS</div> <div>1</div>		<div>EPC</div> <div>C</div>	<div>COUNCIL TAX</div> <div>RBKC, F</div>

The Property

A bright two-bedroom apartment on the third floor with lift and porter service.

Entering the flat, you are welcomed by an entrance hall that provides access to all principal rooms. The reception and dining room is beautifully proportioned with large windows that fill the space with light. The room flows seamlessly between living and dining areas, creating a spacious open-plan environment.

The separate kitchen is well-appointed with warm wooden cabinetry and modern appliances, including gas cooking. A large window provides excellent natural light and views across neighbouring rooftops, featuring dark countertops and ample storage throughout.





The Bedrooms

The principal bedroom is spacious and light-filled with built-in wardrobes providing generous storage. Large windows ensure the room remains bright throughout the day. The second bedroom is equally well-proportioned with pale green fitted wardrobes and excellent natural light.

The family bathroom combines a bath and shower arrangement, while a separate guest washroom provides additional convenience.





The Neighbourhood

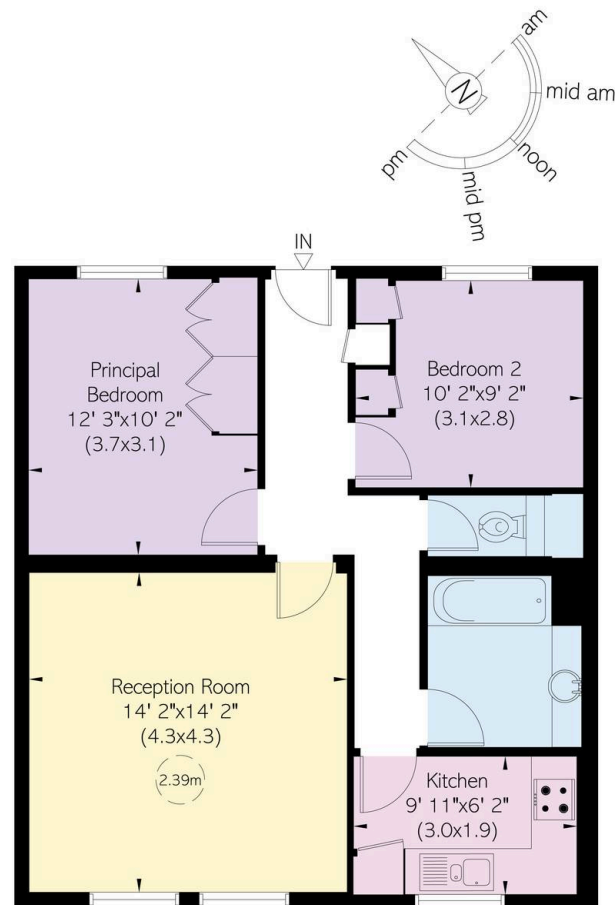
Fulham Road is an attractive address in the heart of Chelsea, moments away from the boutiques and restaurants of the King's Road. The property is within easy reach of South Kensington's cultural attractions and the open spaces of Hyde Park. Excellent transport links include nearby underground stations providing swift access to central London and beyond.

Fulham Road, SW₃

**RUSSELL
SIMPSON**

Approximate Internal Area
669 sq ft/ 62 sq m

This plan is for layout guidance only. Not drawn to scale unless stated. Windows and door openings are approximate. While every care is taken in the preparation of this plan, please check all dimensions, shapes, and compass bearings before making any decisions reliant upon them.



Third Floor

**RUSSELL
SIMPSON**

Contact Us

+44 (0) 20 7225 0277

151A Sydney Street
London
SW3 6NT

chelsea@russellsimpson.co.uk

In accordance with the Property Mis-Description Act 1991, the following details have been prepared in good faith, and are not intended to constitute part of an offer or contract. Any information contained herein (whether in the text, plans or photographs) is given in good faith but should not be relied upon as being a statement of representation of fact. Nothing in these Particulars shall be deemed to be a statement that the property is in good condition or otherwise nor that any services or facilities are in good working order. Any measurements of distances referred to herein are approximate only. October 2021