



RUSSELL SIMPSON

Elegant one-bedroom ground floor
apartment in a classic red brick
mansion block in the heart of
Chelsea

PELHAM COURT
CHELSEA SW3

Pelham Court

£760 P/W

BEDROOMS 1	INTERNAL 479 <small>SQ FT</small>	OUTDOOR —	FURNISHED STATUS Furnished
BATHROOMS 1	44 <small>SQM</small>	EPC C	COUNCIL TAX RBKC, E

The Property

Charming lateral apartment with bright interiors in a prestigious Chelsea location

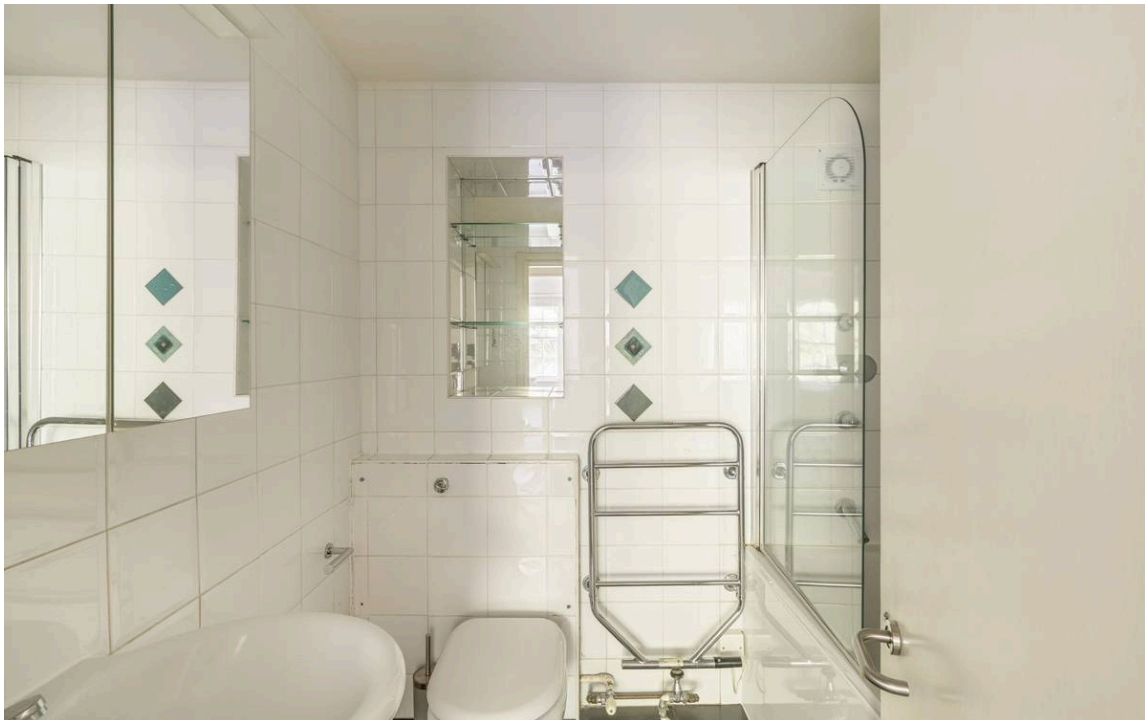
Stepping into the apartment on the ground floor, the entrance hall leads to a well-proportioned reception room. This inviting space features large windows that flood the room with natural light, offering areas for both seating and dining. The kitchen is well-designed with fitted units and integrated appliances.





Indoor Spaces

The bedroom is quietly positioned away from the reception room, featuring built-in storage that maximizes the use of space. The apartment includes a well-appointed bathroom with a combined bath and shower.





The Neighbourhood

Pelham Court is a handsome red brick mansion block with attractive architectural details. The building benefits from a porter service and access to a communal garden.

From here, South Kensington's museums and tube station are within easy walking distance, while the shops and restaurants of Brompton Road and Sloane Square are also nearby.

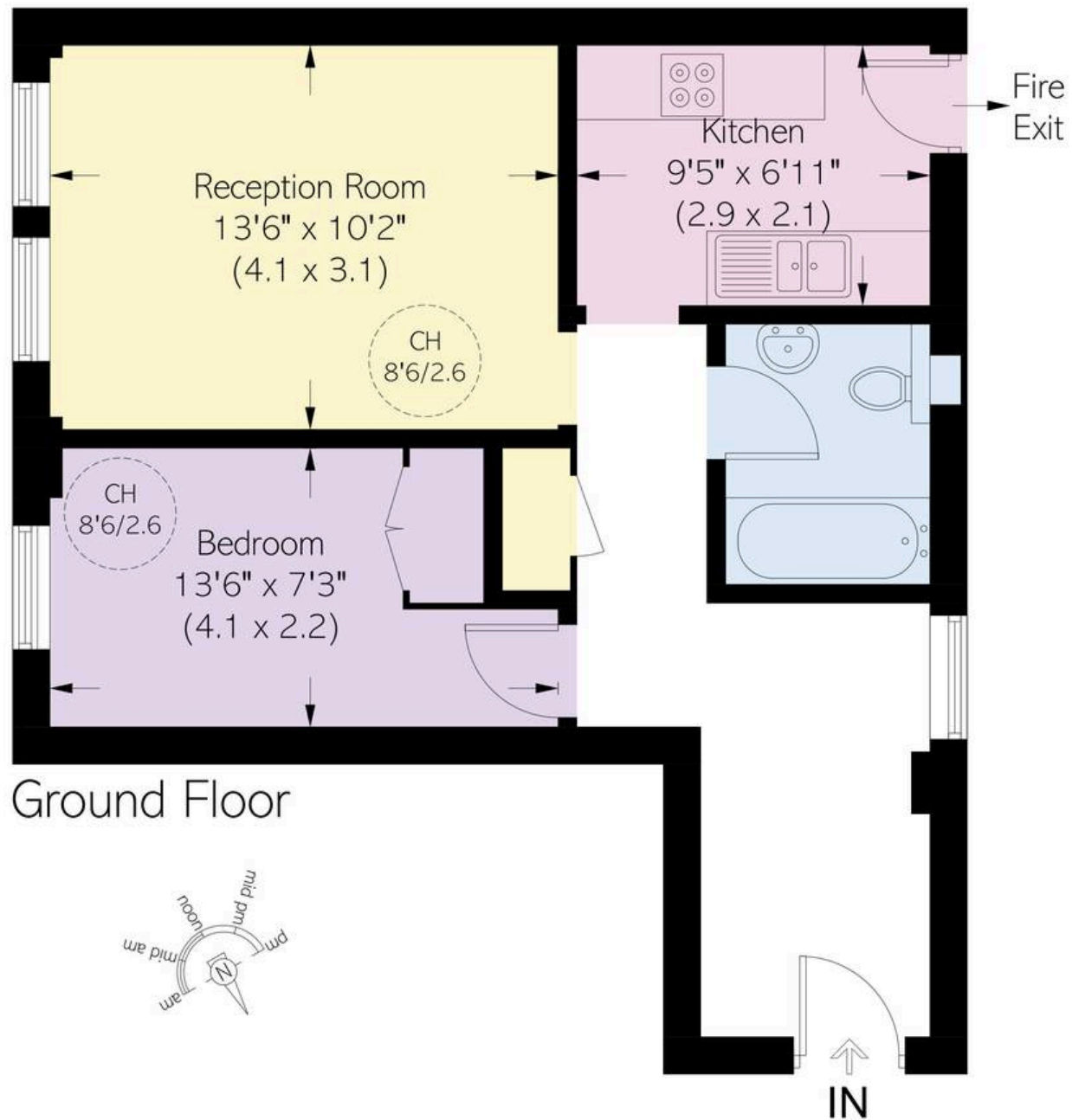


Pelham Court,
SW3

Approximate area
479 sq ft / 44.5 sq m

Including limited use area
(4 sq ft / 0.4 sq m)

**RUSSELL
SIMPSON**



This plan is for layout guidance only.
Not drawn to scale unless stated. Windows
and door openings are approximate. Whilst
every care is taken in the preparation of this
plan, please check all dimensions, shapes,
and compass bearings before making any
decisions reliant upon them.

**RUSSELL
SIMPSON**

Contact Us

+44 (0) 20 7225 0277

151A Sydney Street
London
SW3 6NT

chelsea@russellsimpson.co.uk