

RUSSELL SIMPSON

Two bedroom flat to rent with access
to a private garden square

FULHAM ROAD
CHELSEA SW3

Fulham Road

Let

BEDROOMS 2-2	INTERNAL 750 _{SQ FT}	OUTDOOR —	FURNISHED STATUS Furnished
BATHROOMS 1-1	69 _{SQM}	EPC C	COUNCIL TAX RBKC, G

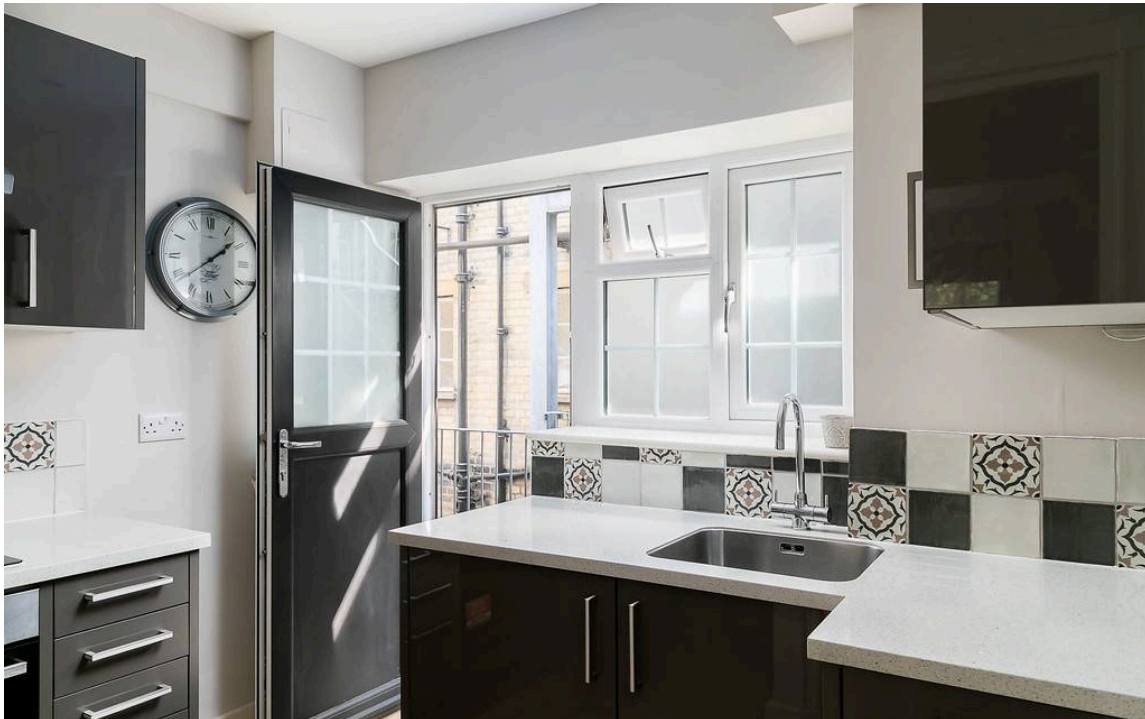


The Property

Modern flat in a mansion block moments away from South Kensington underground station

Entering the flat on the fourth floor, the door opens directly into a spacious reception room allowing for separate dining and seating areas. Beyond is a principal bedroom with built-in storage, and beyond that a second bedroom.

On the other side of the flat there is a modern kitchen with a fire escape, as well as a bathroom.





The Bedrooms





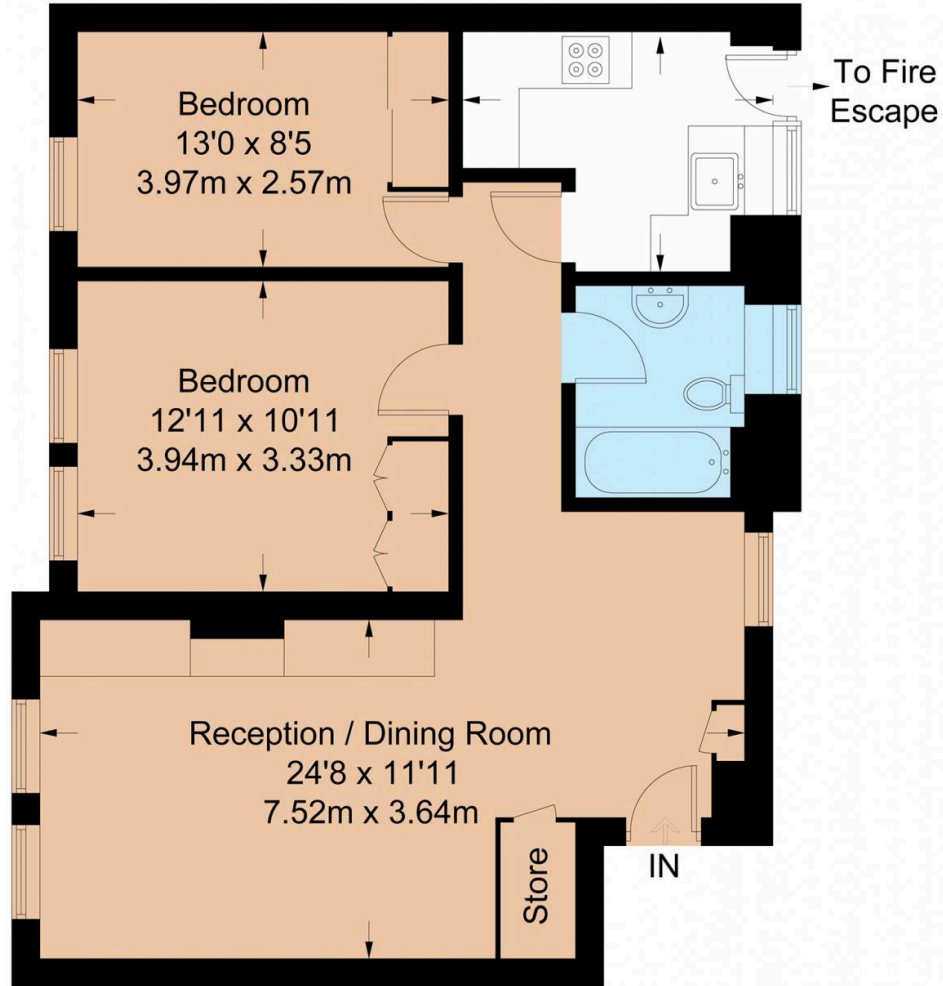
The Neighbourhood

Pelham Court is a grand, Edwardian-style mansion block with a lift and porter. There is a communal garden to the rear that residents have access to.

Pelham Court is exceptionally well-located, a short walk away from South Kensington underground station. In addition, the celebrated shops and restaurants of the Fulham Road and the King's Road are all within easy reach.

Fulham Road

Approximate Gross Internal Area = 750 sq ft / 69.7 sq m



Fourth Floor

Not to scale, for guidance only and must not be relied upon as a statement of fact.
All measurements and areas are approximate only and have been prepared in accordance with the current edition of the RICS Code of Measuring Practice.

**RUSSELL
SIMPSON**

Contact Us

+44 (0) 20 7225 0277

Contact us

info@russellsimpson.co.uk

Sydney Street

+44 (0) 20 7225 0277

151A Sydney Street

London

SW3 6NT

chelsea@russellsimpson.co.uk

Kensington Square

+44 (0) 20 3761 9691

13 Kensington Square

London

W8 5HD

kensington@russellsimpson.co.uk