



## **RUSSELL SIMPSON**

Stylish two bedroom flat in Chelsea  
with large roof terrace to rent

FULHAM ROAD  
CHELSEA SW10

Fulham Road

Let

BEDROOMS 2	INTERNAL 781 SQ FT	OUTDOOR 214 SQ FT	FURNISHED STATUS Unfurnished
BATHROOMS 1	72 SQM	EPC C	COUNCIL TAX RBKC, G



## The Property

Carefully designed flat with contemporary interiors moments away from Coleridge Square

Entering the flat on the second floor, the front hall leads directly into the reception room. This room has south-east facing windows and enough space for dining and seating areas.

The reception room flows through to the fitted kitchen, creating an open-plan living space. The kitchen includes wooden floors and a French door leading out onto the roof terrace.





## The Bedrooms

The flat also has two bedrooms with built-in storage space, sharing a bathroom with a bath. It is presented in good condition with air conditioning in both bedrooms and the living space.





## Outdoor Spaces & The Neighbourhood

The property includes a roof terrace with wooden decking and enough space for outdoor seating.

The flat is located in a terrace of houses set back from the street. Opposite is the beautiful former chapel of St Mark's College, with the open spaces of Coleridge Square behind. From here, the restaurants and shops of the King's Road are close, while Fulham Broadway underground and Imperial Wharf overground stations are also nearby. In addition, the tree-lined avenues and Victorian tombs of Brompton Cemetery are a short walk away.

# Fulham Road, SW10

**RUSSELL  
SIMPSON**

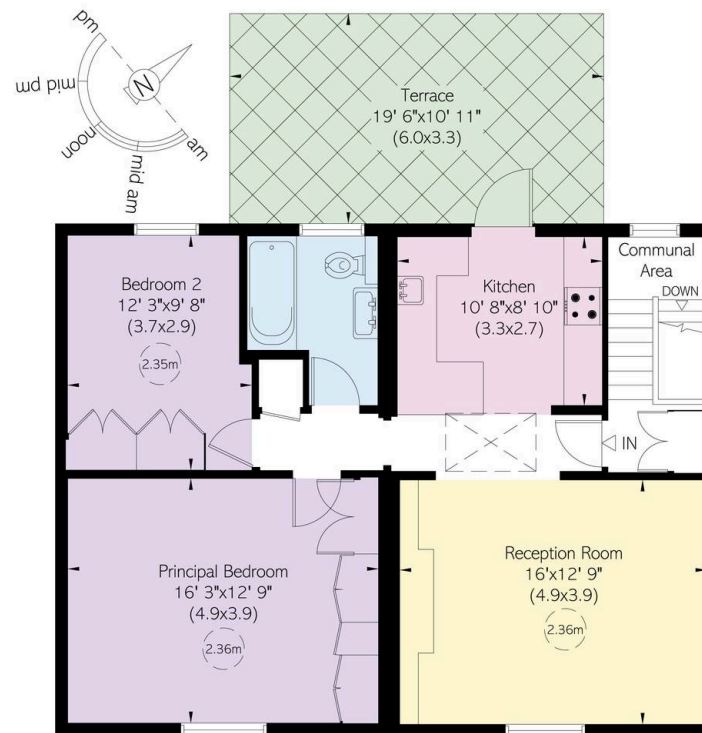
## Approximate Internal Area

782 sq ft / 73 sq m

## Outside Area

214 sq ft / 20 sq m

This plan is for layout guidance only. Not drawn to scale unless stated. Windows and door openings are approximate. Whilst every care is taken in the preparation of this plan, please check all dimensions, shapes, and compass bearings before making any decisions reliant upon them.



Second Floor

**RUSSELL  
SIMPSON**

---

## Contact Us

+44 (0) 20 7225 0277

151A Sydney Street  
London  
SW3 6NT

[chelsea@russellsimpson.co.uk](mailto:chelsea@russellsimpson.co.uk)