



## **RUSSELL SIMPSON**

Unique Chelsea house with modern  
interiors and off-street parking to  
rent

FERNSHAW CLOSE  
CHELSEA SW10

# Fernshaw Close

£6,950 P/W

BEDROOMS 5	INTERNAL 3,601 SQ FT	OUTDOOR 1,301 SQ FT	FURNISHED STATUS Furnished
BATHROOMS 4	334 SQM	EPC C	COUNCIL TAX RBKC, G



## The Property

Entering the house on the ground floor, the front door opens directly onto a generous reception room. The room has exceptionally high ceilings, as well as floor-to-ceiling windows looking out on the garden, and enough space for separate dining and seating areas. In addition, sliding glass doors open onto a modern kitchen with a central island and breakfast area. Both these rooms have French doors leading out into the garden. In addition, this floor contains a home office and a guest loo.





## Indoor Spaces

The lower ground floor offers a bedroom with ensuite bathroom, as well as a utility room, a wine room and an additional bathroom. Downstairs again, the basement floor contains a reception room with spectacular double-height ceilings, as well as a double-height window and patio access, keeping the space well-lit. This floor also contains a curtained home cinema, a second office and a plant room.

---

img 1

Office

img 2

Kitchen



## Entertaining Spaces





## Details

The house has been designed in a modern style, with stylish contemporary interiors. This includes a beautiful staircase, bar and shelving for the basement as well as several bespoke overhead lampshades. In addition, the property benefits from underfloor heating and air conditioning throughout.



img 1

Light Feature

img 2

Living Room



## The Bedrooms

The first floor includes a private principal bedroom suite with a dressing room and ensuite bathroom. This floor also contains a second ensuite bathroom, while the second floor offers two more bedrooms and a shared bathroom, as well as access to a terrace.

---

img 1

Principal Bedroom

---

img 2

Bathroom







## Outdoor Spaces

The property includes a generous garden with wooden decking and enough space for outdoor dining. In addition, there is off-street parking and a second-floor terrace.





## The Neighbourhood

Fernshaw Close is set back from Fernshaw Road, a quiet residential street in Chelsea. From here, the restaurants and shops of the King's Road are close, and so too Fulham Broadway underground station. In addition, Brompton Cemetery is a short walk away, with its beautiful avenues and Victorian tombs.

# Fernshaw Close, SW10

**RUSSELL SIMPSON**

**Approximate Internal Area**

3601 sq ft / 335 sq m

**Including limited use area**

96 sq ft / 9 sq m

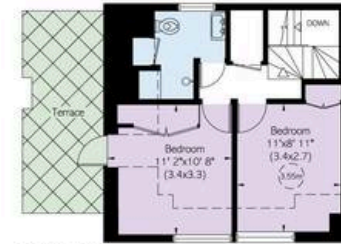
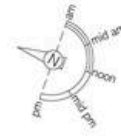
**Outside Area**

1,301 sq ft / 121 sq m

This plan is for layout guidance only. Not drawn to scale unless stated. Windows and door openings are approximate. Whilst every care is taken in the preparation of this plan, please check all dimensions, shapes, and compass bearings before making any decisions reliant upon them.



First Floor



Second Floor



Basement



Lower Ground Floor



Ground Floor

**RUSSELL  
SIMPSON**

---

## Contact Us

+44 (0) 20 7225 0277

Contact us

[info@russellsimpson.co.uk](mailto:info@russellsimpson.co.uk)

---

## Sydney Street

+44 (0) 20 7225 0277

151A Sydney Street  
London  
SW3 6NT

[chelsea@russellsimpson.co.uk](mailto:chelsea@russellsimpson.co.uk)

---

## Kensington Square

+44 (0) 20 3761 9691

13 Kensington Square  
London  
W8 5HD

[kensington@russellsimpson.co.uk](mailto:kensington@russellsimpson.co.uk)