



RUSSELL SIMPSON

Unique Chelsea house with modern interiors and off-street parking to rent

FERNSHAW CLOSE
CHELSEA SW10

Fernshaw Close

£13,000 P/W

BEDROOMS 5	INTERNAL 3,601 <small>SQ FT</small>	OUTDOOR 1,301 <small>SQ FT</small>	FURNISHED STATUS Furnished
BATHROOMS 4	334 <small>SQM</small>	EPC C	COUNCIL TAX G

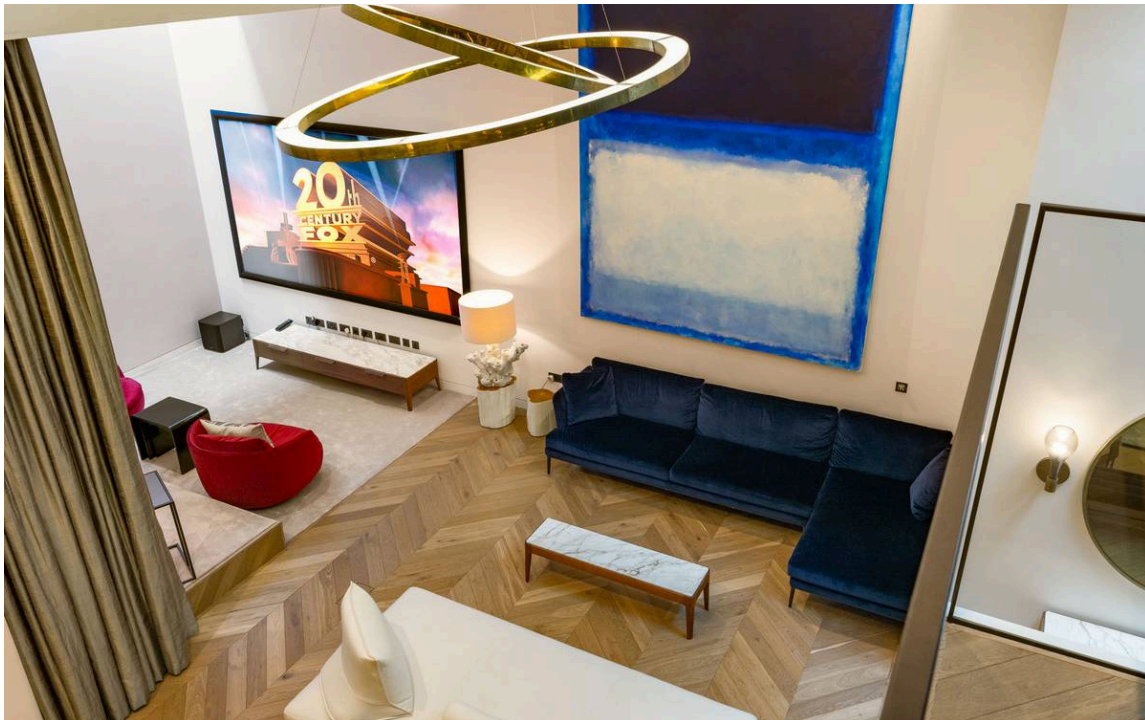


The Property

Entering the house on the ground floor, the front door opens directly onto a generous reception room. The room has exceptionally high ceilings, as well as floor-to-ceiling windows looking out on the garden, and enough space for separate dining and seating areas. In addition, sliding glass doors open onto a modern kitchen with a central island and breakfast area. Both these rooms have French doors leading out into the garden. In addition, this floor contains a home office and a guest loo.



Entertaining Spaces





The Bedrooms

The lower ground floor offers a bedroom with ensuite bathroom, as well as a utility room, a wine room and an additional bathroom. Downstairs again, the basement floor contains a reception room with spectacular double-height ceilings, as well as a double-height window and patio access, keeping the space well-lit. This floor also contains a curtained home cinema, a second office and a plant room.

The first floor includes a private principal bedroom suite with a dressing room and ensuite bathroom. This floor also contains a second ensuite bathroom, while the second floor offers two more bedrooms and a shared bathroom, as well as access to a terrace.



Details

The house has been designed in a modern style, with stylish contemporary interiors. This includes a beautiful staircase, bar and shelving for the basement as well as several bespoke overhead lampshades. In addition, the property benefits from underfloor heating and air conditioning throughout.





Outdoor Spaces

The property includes a generous garden with wooden decking and enough space for outdoor dining. In addition, there is off-street parking and a second-floor terrace.



The Neighbourhood

Fernshaw Close is set back from Fernshaw Road, a quiet residential street in Chelsea. From here, the restaurants and shops of the King's Road are close, and so too Fulham Broadway underground station. In addition, Brompton Cemetery is a short walk away, with its beautiful avenues and Victorian tombs.

Fernshaw Close, SW10

**RUSSELL
SIMPSON**

Approximate Internal Area

3601 sq ft / 335 sq m

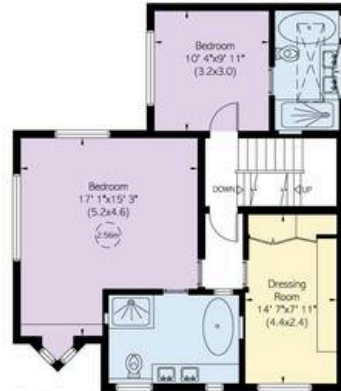
Including limited use area

96 sq ft / 9 sq m

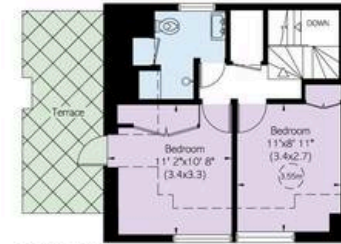
Outside Area

1,301 sq ft / 121 sq m

This plan is for layout guidance only. Not drawn to scale unless stated. Windows and door openings are approximate. Whilst every care is taken in the preparation of this plan, please check all dimensions, shapes, and compass bearings before making any decisions reliant upon them.



First Floor



Second Floor



Basement



Lower Ground Floor



Ground Floor

**RUSSELL
SIMPSON**

Contact Us

+44 (0) 20 7225 0277

Contact us

info@russellsimpson.co.uk

Sydney Street

+44 (0) 20 7225 0277

151A Sydney Street

London

SW3 6NT

chelsea@russellsimpson.co.uk

Kensington Square

+44 (0) 20 3761 9691

13 Kensington Square

London

W8 5HD

kensington@russellsimpson.co.uk