



## **RUSSELL SIMPSON**

Elegant one bedroom Chelsea flat  
with communal garden access to  
rent

EVELYN GARDENS  
SOUTH KENSINGTON SW7

# Evelyn Gardens

# Let

BEDROOMS 1	INTERNAL 671 SQ FT	OUTDOOR 22 SQ FT	FURNISHED STATUS Furnished
BATHROOMS 1	62 SQM	EPC D	COUNCIL TAX RBKC, G

## The Property

Well-positioned flat with a balcony and beautiful interiors close to the Fulham Road

The flat is decorated in an opulent fashion, with parquet wooden flooring and mouldings for the ceilings and walls. Large windows, lofty rooms and a stone fireplace add to the sense of grandeur.

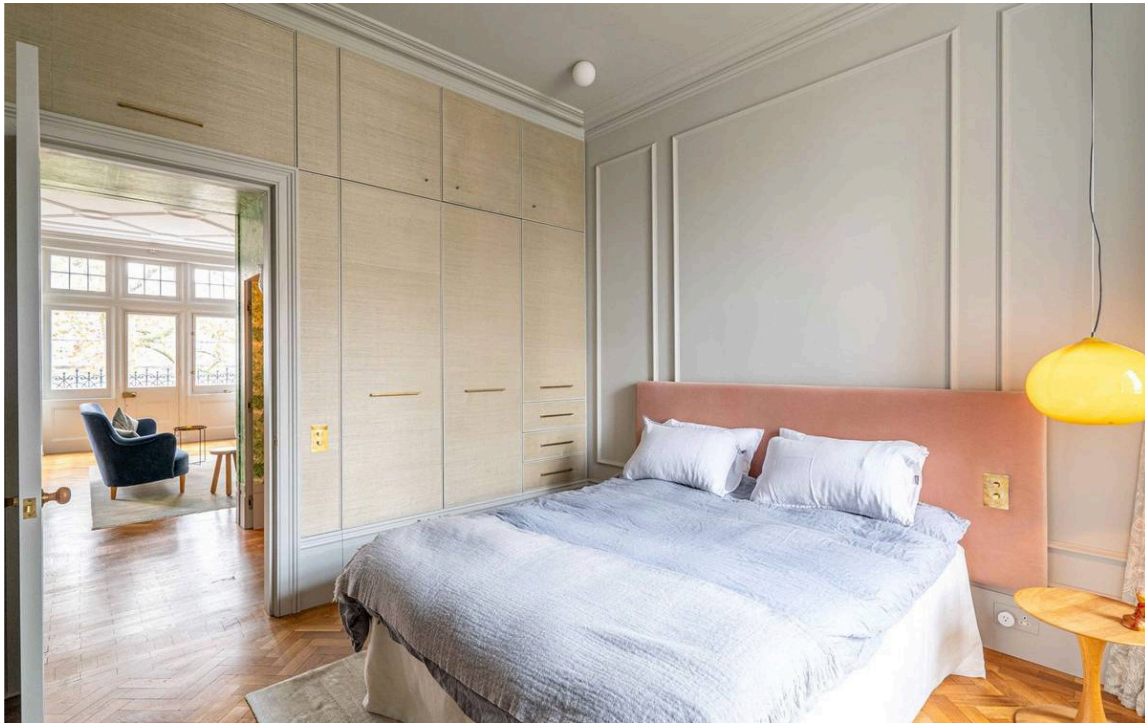




## Indoor Spaces

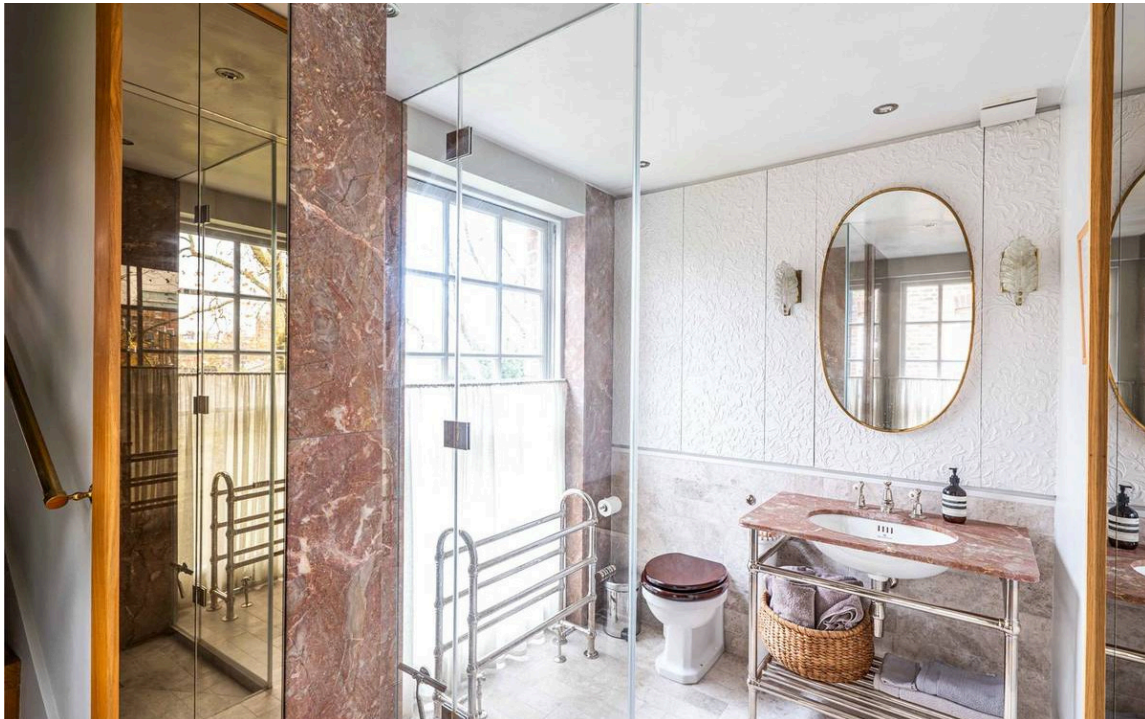
Entering the flat on the second floor, the front hall leads through to a generous reception room. As well as an open-plan kitchen, this space contains separate dining and seating areas. Furthermore, double French doors open onto a south-east facing balcony, bringing in light for much of the day.





## The Bedroom

The property also contains a bedroom with built-in storage and steps leading down to an ensuite bathroom. A guest WC completes the layout.





## Details







## The Neighbourhood

The flat has a south-east facing balcony big enough for outdoor eating. Residents also have the right to access the communal garden square.

Evelyn Gardens was built in the late nineteenth century and named after the Victorian politician William Evelyn. The square is lined with large red-brick houses built in late Victorian Era, with Dutch gables and stucco window dressings. The property is close to the Fulham Road and within walking distance of the King's Road, bringing a wide range of restaurants and shops into easy reach. South Kensington underground station is also nearby.

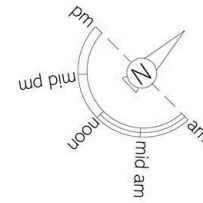
# Evelyn Gardens, SW7

**Approximate Internal Area**  
671 sq ft/ 62 sq m

**Outside Area**  
23 sq ft/ 2 sq m

**RUSSELL  
SIMPSON**

This plan is for layout guidance only.  
Not drawn to scale unless stated. Windows  
and door openings are approximate. Whilst  
every care is taken in the preparation of this  
plan, please check all dimensions, shapes,  
and compass bearings before making any  
decisions reliant upon them.



Second Floor



**RUSSELL  
SIMPSON**

---

## Contact Us

+44 (0) 20 7225 0277

Contact us

[info@russellsimpson.co.uk](mailto:info@russellsimpson.co.uk)

---

## Sydney Street

+44 (0) 20 7225 0277

151A Sydney Street  
London  
SW3 6NT

[chelsea@russellsimpson.co.uk](mailto:chelsea@russellsimpson.co.uk)

---

## Kensington Square

+44 (0) 20 3761 9691

13 Kensington Square  
London  
W8 5HD

[kensington@russellsimpson.co.uk](mailto:kensington@russellsimpson.co.uk)