

RUSSELL SIMPSON

Bright and colourful three bedroom
house to let on a popular
Knightsbridge mews

ENNISMORE GARDENS MEWS
SOUTH KENSINGTON SW7

Ennismore Gardens Mews

£2,650 P/W

BEDROOMS 3	INTERNAL 1,175 <small>SQ FT</small>	OUTDOOR 52 <small>SQ FT</small>	FURNISHED STATUS Furnished
BATHROOMS 2	109 <small>SQM</small>	EPC E	COUNCIL TAX RBKC, H

The Property

Spacious mews house with contemporary interiors on a cobbled street close to Hyde Park



img 1

Dining Room

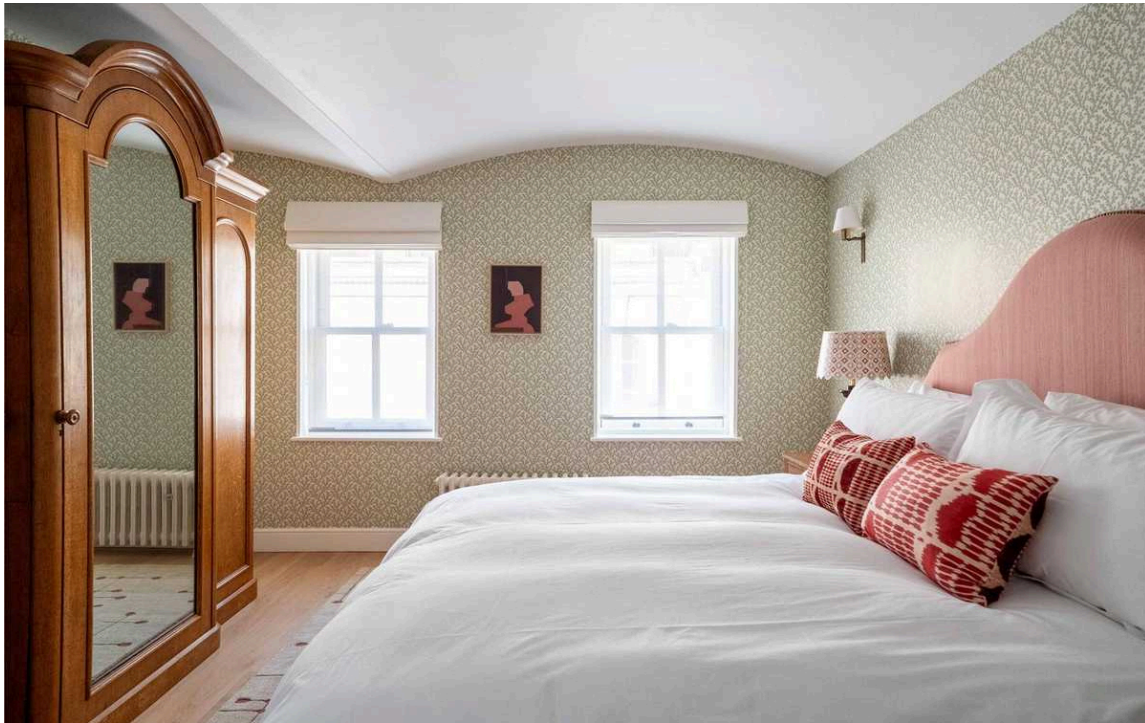
img 2

Kitchen



Indoor Spaces

The property is centred around the generous living area on the first floor. This includes an open-plan kitchen and dining room, communicating through to the reception room. Unusually for a mews house, windows on both sides bring in added light, while double French doors open onto the balcony.



The Bedrooms

Upstairs, on the first floor, there are three bedrooms. The principal bedroom has an ensuite bathroom, while the other two bedrooms share a second bathroom with a bath.

img 1

Principal Bedroom

img 2

Double Bedroom



The Design

The property has been decorated in a creative fashion, with colourful wallpaper and carpets adding to the sense of contemporary style. It also offers air conditioning in the living areas and bedrooms.



img 2

Dining Area



The Neighbourhood

The property includes a first-floor balcony.

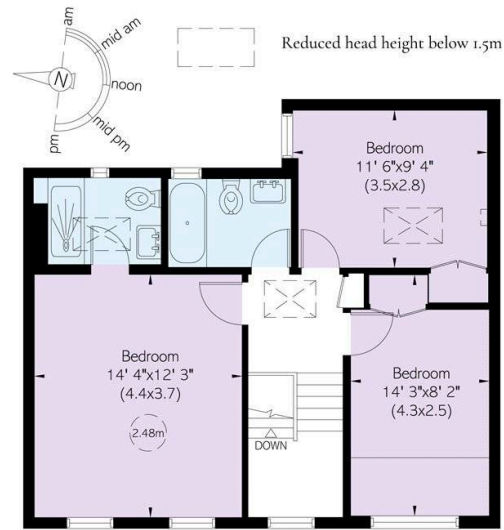
Ennismore Gardens Mews is a picturesque mews with pastel-painted houses and a cobble road. Both South Kensington and Knightsbridge underground stations are within walking distance, while the open spaces of Hyde Park are also nearby. Furthermore, the cultural institutions of South Kensington are close, including world-class museums and concert halls.

Ennismore Gardens Mews, SW7 **RUSSELL SIMPSON**

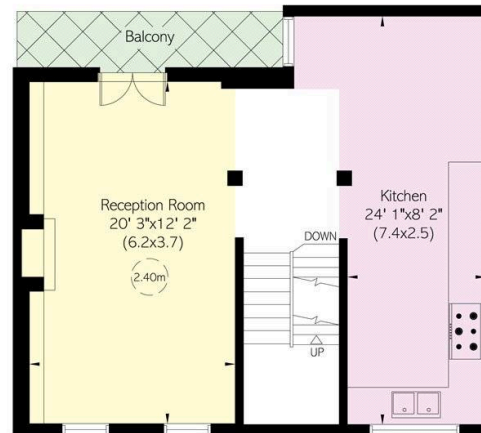
Approximate Internal Area
1,175 sq ft / 109 sq m

Outside Area
52 sq ft / 5 sq m

This plan is for layout guidance only. Not drawn to scale unless stated. Windows and door openings are approximate. While every care is taken in the preparation of the plan, please check all dimensions, shapes, and compass bearings before making any decisions reliant upon them.



Second Floor



First Floor

**RUSSELL
SIMPSON**

Contact Us

+44 (0) 20 7225 0277

Contact us

info@russellsimpson.co.uk

Sydney Street

+44 (0) 20 7225 0277

151A Sydney Street

London

SW3 6NT

chelsea@russellsimpson.co.uk

Kensington Square

+44 (0) 20 3761 9691

13 Kensington Square

London

W8 5HD

kensington@russellsimpson.co.uk