



RUSSELL SIMPSON

Sophisticated two bedroom raised
ground-floor apartment in
Knightsbridge

ENNISMORE GARDENS
KNIGHTSBRIDGE SW7

Ennismore Gardens

£1,385 _{P/W}

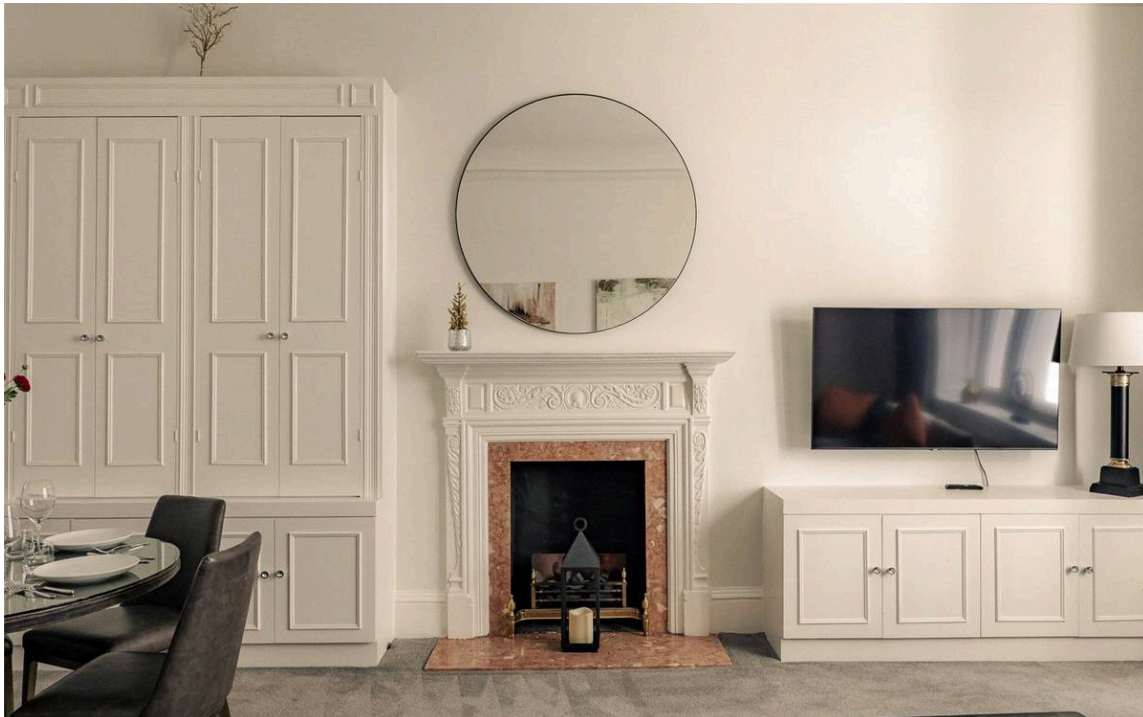
BEDROOMS 2	INTERNAL 1,041 _{SQ FT} 96 _{SQM}	OUTDOOR 58 _{SQ FT}	FURNISHED STATUS Furnished
BATHROOMS 2		EPC D	COUNCIL TAX Westminster City, G

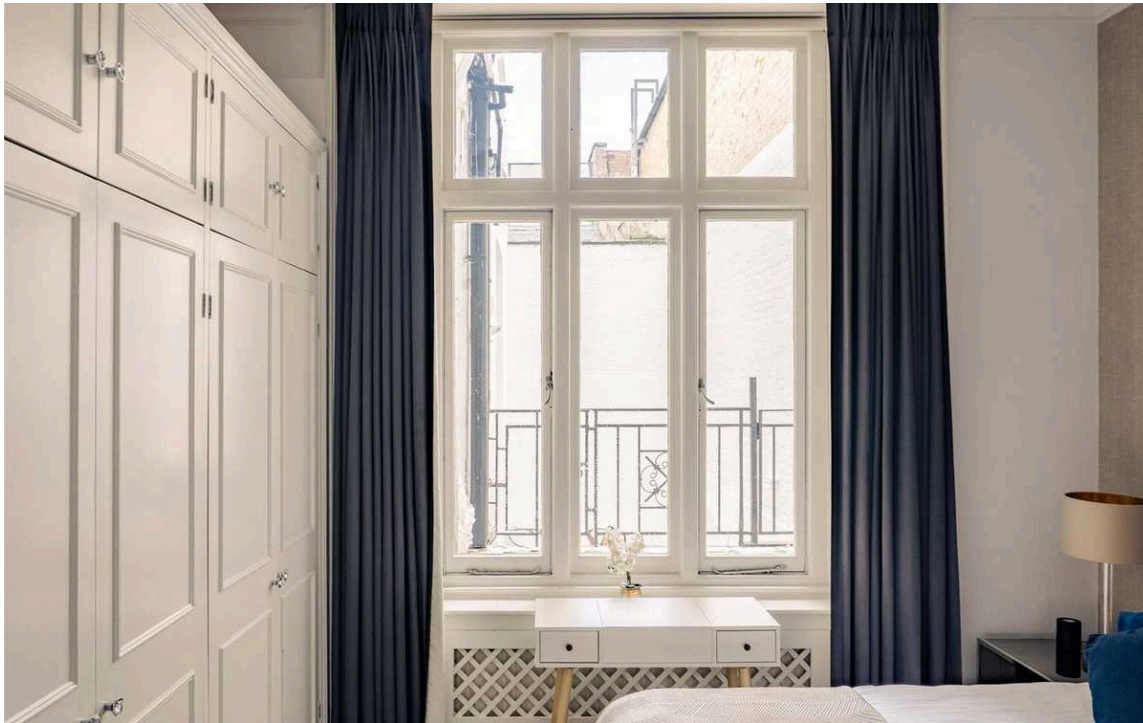


The Property

Beautifully presented apartment with exceptional entertaining space

Entering the flat on the raised ground floor, you are welcomed into an entrance hall that leads you into the reception room. The generous reception room fills the space with light and elegant period details, including an ornate fireplace with decorative moulding. The sophisticated interiors are decorated in a refined contemporary style, with built-in storage maximising the available space. A compact fitted kitchen provides all essential amenities within a considered design, featuring modern appliances and maximising the available space efficiently.





The Bedrooms

The principal bedroom is spacious, featuring built-in wardrobes and storage. An ensuite bathroom with modern fixtures completes this bedroom. The second bedroom is equally well-proportioned and benefits from direct access to the private terrace, making it ideal as either a bedroom or study. This room also features an ensuite bathroom and inbuilt storage space.





The Neighbourhood

The property includes a south-facing private terrace accessible from the second bedroom.

Ennismore Gardens is a quiet residential address in the heart of Knightsbridge, lined with elegant white stucco townhouses. The tree-lined street maintains a graceful character while being within easy reach of Harrods, Harvey Nichols, and the upmarket boutiques of Sloane Street. Hyde Park is a short walk away, offering expansive open spaces and recreational facilities.

Knightsbridge Underground station provides excellent transport links, while the area's many restaurants and cultural attractions, including the artistic treasures of the Victoria and Albert Museum, are all within walking distance.

Ennismore Gardens, SW7

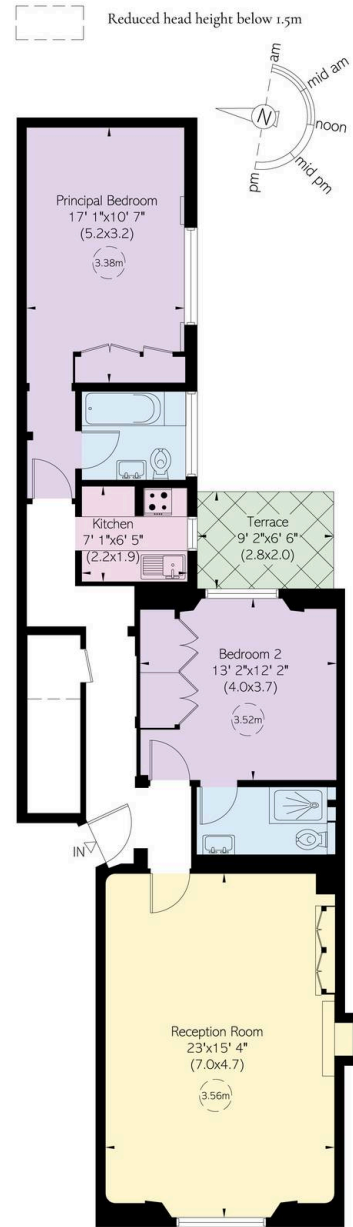
Approximate Internal Area
1,041 sq ft/ 97 sq m

Including limited use area
27 sq ft/ 3 sq m

Outside Area
59 sq ft/ 6 sq m

**RUSSELL
SIMPSON**

This plan is for layout guidance only.
Not drawn to scale unless stated. Windows
and door openings are approximate. Whilst
every care is taken in the preparation of this
plan, please check all dimensions, shapes,
and compass bearings before making any
decisions reliant upon them.



Raised Ground Floor

**RUSSELL
SIMPSON**

Contact Us

+44 (0) 20 7225 0277

151A Sydney Street
London
SW3 6NT

chelsea@russellsimpson.co.uk

In accordance with the Property Mis-Description Act 1991, the following details have been prepared in good faith, and are not intended to constitute part of an offer or contract. Any information contained herein (whether in the text, plans or photographs) is given in good faith but should not be relied upon as being a statement of representation of fact. Nothing in these Particulars shall be deemed to be a statement that the property is in good condition or otherwise nor that any services or facilities are in good working order. Any measurements of distances referred to herein are approximate only. October 2021