



## **RUSSELL SIMPSON**

Exceptional six-bedroom townhouse  
with elegant interiors and a lift, in  
Knightsbridge

ENNISMORE GARDENS  
KNIGHTSBRIDGE SW7

Ennismore Gardens

£6,923 <sub>P/W</sub>

BEDROOMS 6	INTERNAL  4,156 <sub>SQ FT</sub>  386 <sub>SQM</sub>	OUTDOOR  582 <sub>SQ FT</sub>	FURNISHED STATUS  Furnished
BATHROOMS 4		EPC  E	COUNCIL TAX  Westminster City, H

# The Property

A grand family home offering refined living across six thoughtfully designed levels.

Throughout the house, considered design details include wooden floors in herringbone pattern, high ceilings that create a sense of scale, and carefully curated colour schemes ranging from warm burgundy tones to elegant pastels.





## Indoor Spaces



Entering the house on the raised ground floor, you step into an elegant entrance hall with marble flooring that creates an impressive sense of arrival. This flows through to the formal dining room, where classical elegance prevails with ornate ceiling mouldings and built-in shelving units that add architectural interest. A striking crystal chandelier fills the space with light, while the sophisticated neutral palette enhances the room's graceful proportions.

Next door, the study features distinctive red wall panelling and refined built-in shelving, creating a sophisticated workspace with charming, intimate scale. A guest washroom completes this level.

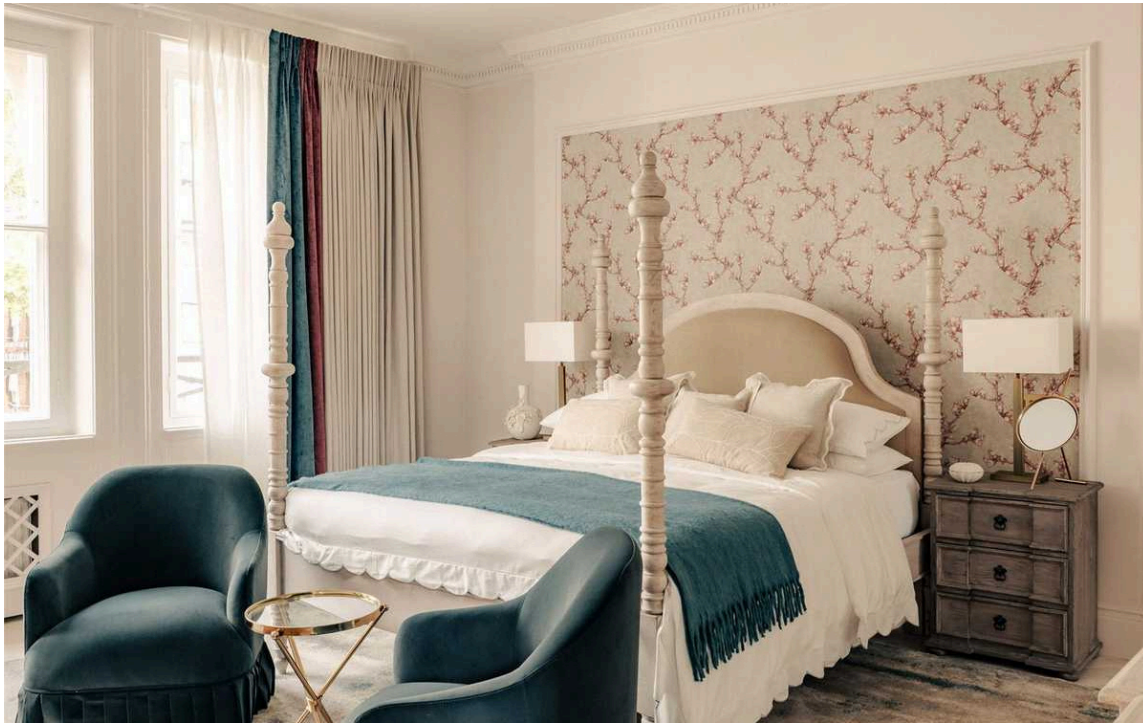


## Double Reception Room

The first floor houses a spectacular reception room with lofty proportions, extending across the full width of the house. French doors open onto a balcony, while the space flows seamlessly between distinct seating areas. An ornate marble fireplace with classical sculptural detailing is the room's focal point, complemented by an elegant amber-toned chandelier and sophisticated furnishings.







## The Bedrooms

The principal bedroom occupies the whole of the second floor, offering substantial space with generous built-in storage and an ensuite bathroom featuring twin sinks, a freestanding bath and a separate shower. The third floor accommodates two well-proportioned bedrooms, both with ensuite facilities. The fourth floor features two bedrooms sharing a bathroom - one configured as a study with direct terrace access.





## The Kitchen

The lower ground level houses a beautifully designed kitchen with contemporary fittings, featuring white cabinetry with herringbone tile backsplash and a central island. The space includes integrated appliances and breakfast seating, while a fifth bedroom with separate facilities completes this level.





## The Neighbourhood

The property includes a private terrace on the fourth and first floors, providing space for outdoor seating with rooftop views across this prestigious Knightsbridge location.

Ennismore Gardens is a quiet residential address in the heart of Knightsbridge, moments away from the open spaces of Hyde Park and the upmarket boutiques of Harrods and Harvey Nichols. The tree-lined street features elegant white stucco townhouses and is within easy reach of Knightsbridge Underground station. The area offers exceptional dining at nearby restaurants and is a short walk to the artistic treasures of the Victoria and Albert Museum and Natural History Museum in South Kensington.



# Ennismore Gardens, SW7

**RUSSELL  
SIMPSON**

## Approximate Internal Area

4,568 sq ft / 386 sq m

## Including limited use area, outside storage and vaults

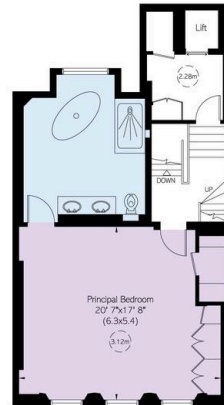
154 sq ft / 12 sq m

## Outside Area

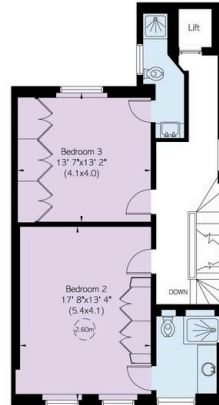
582 sq ft / 54 sq m

This plan is for layout guidance only. Not drawn to scale unless stated. Windows and door openings are approximate. Whilst every care is taken in the preparation of this plan, please check all dimensions, shapes, and compass bearings before making any decisions related to them.

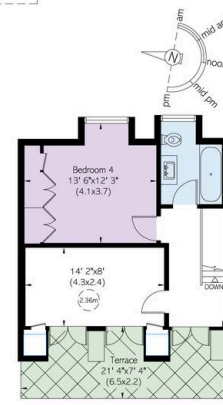
Reduced head height below 1.9m



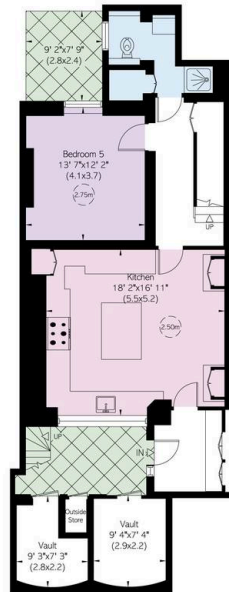
Second Floor



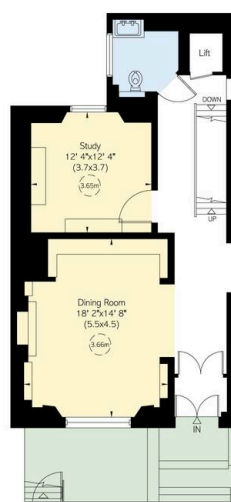
Third Floor



Fourth Floor



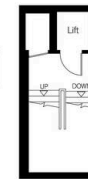
Lower Ground Floor



Raised Ground Floor



First Floor



Half Landing

**RUSSELL  
SIMPSON**

---

## Contact Us

+44 (0) 20 7225 0277

151A Sydney Street  
London  
SW3 6NT

[chelsea@russellsimpson.co.uk](mailto:chelsea@russellsimpson.co.uk)

In accordance with the Property Mis-Description Act 1991, the following details have been prepared in good faith, and are not intended to constitute part of an offer or contract. Any information contained herein (whether in the text, plans or photographs) is given in good faith but should not be relied upon as being a statement of representation of fact. Nothing in these Particulars shall be deemed to be a statement that the property is in good condition or otherwise nor that any services or facilities are in good working order. Any measurements of distances referred to herein are approximate only. October 2021