



## **RUSSELL SIMPSON**

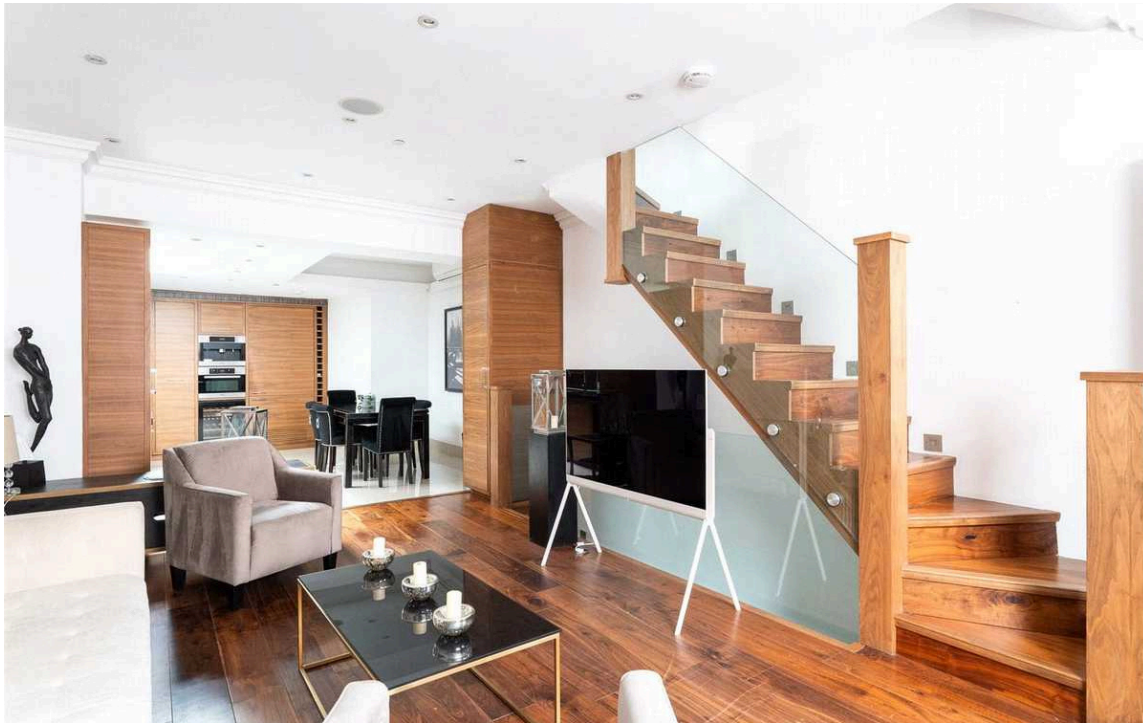
Beautifully decorated three-bedroom house with two terraces on a sought-after Chelsea street

ELYSTAN PLACE  
CHELSEA SW3

Elystan Place

£2,500 <sub>P/W</sub>

BEDROOMS 4	INTERNAL  1,688 <sub>SQ FT</sub>  156 <sub>SQM</sub>	OUTDOOR  273 <sub>SQ FT</sub>	FURNISHED STATUS  Furnished
BATHROOMS 3		EPC  C	COUNCIL TAX  H



## The Property

Charming house with stylish interiors close to the gastronomic delights of Chelsea Green

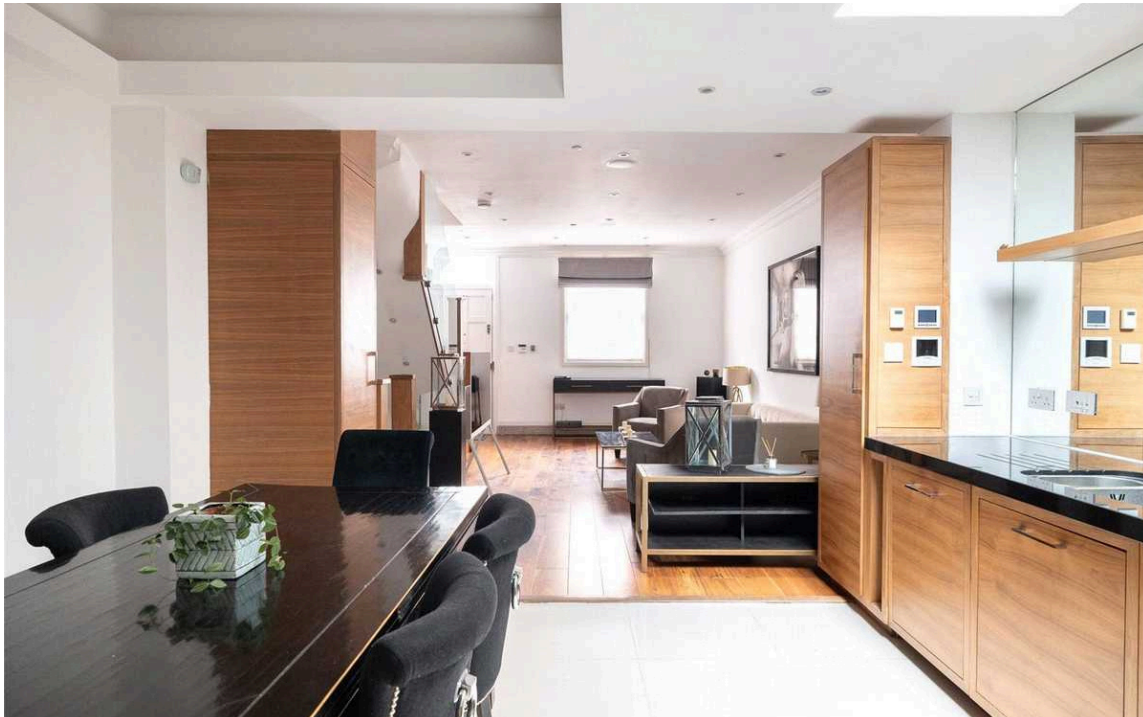
Entering the house on the ground floor, the front door opens directly onto a large reception room occupying the entire level. This includes a seating area and an open-plan kitchen with a dining area. Wooden floors and kitchen units give this space a sense of harmony and sophistication.

The first floor offers a double bedroom and study. The study has French windows leading to a rear terrace. Furthermore, the second floor features a principal bedroom with ensuite bathroom, inbuilt storage and south-facing bifolding doors that open directly onto the roof terrace.

Downstairs is a bedroom with an ensuite bathroom and double French doors giving access to a patio. In addition, this floor contains a comfortable family television room and a guest WC.

The property has been carefully designed to create stylish interiors with modern conveniences such as air conditioning.

The house includes a pair of south-facing terraces with enough space for outdoor seating. The first-floor terrace has wooden fencing for privacy, while the second-floor terrace has beautiful garden views.



img 1

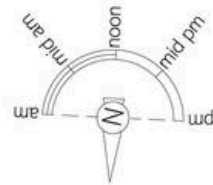
Living Room

img 2

Open Plan Kitchen

# The Neighbourhood

Elystan Place is lined with an attractive mix of architecture from across the late nineteenth and twentieth centuries. It leads towards Chelsea Green, which is now the neighbourhood's gastronomic centre, offering a range of delis, cafes and restaurants. The many shopping options of the King's Road are equally close, while Sloane Square station is also nearby.



## Elystan Place, SW<sub>3</sub>

**RUSSELL  
SIMPSON**

### Approximate Internal Area

1,688 sq ft/ 157 sq m

### Including limited use area

11 sq ft/ 1 sq m

### Outside Area

274 sq ft/ 25 sq m

This plan is for layout guidance only. Not drawn to scale unless stated. Windows and door openings are approximate. Whilst every care is taken in the preparation of this plan, please check all dimensions, shapes, and compass bearings before making any decisions reliant upon them.



**RUSSELL  
SIMPSON**

---

## Contact Us

+44 (0) 20 7225 0277

151A Sydney Street  
London  
SW3 6NT

[chelsea@russellsimpson.co.uk](mailto:chelsea@russellsimpson.co.uk)

In accordance with the Property Mis-Description Act 1991, the following details have been prepared in good faith, and are not intended to constitute part of an offer or contract. Any information contained herein (whether in the text, plans or photographs) is given in good faith but should not be relied upon as being a statement of representation of fact. Nothing in these Particulars shall be deemed to be a statement that the property is in good condition or otherwise nor that any services or facilities are in good working order. Any measurements of distances referred to herein are approximate only. October 2021