



RUSSELL SIMPSON

Beautifully decorated three-bedroom house with two terraces on a sought-after Chelsea street

ELYSTAN PLACE
CHELSEA SW3

Elystan Place

£4,250 P/W

BEDROOMS 3	INTERNAL 1,688 <small>SQ FT</small>	OUTDOOR 273 <small>SQ FT</small>	FURNISHED STATUS Furnished
BATHROOMS 3	156 <small>SQM</small>	EPC C	COUNCIL TAX RBKC, H



The Property

Charming house with stylish interiors close to the gastronomic delights of Chelsea Green

The property has been carefully designed to create stylish interiors with modern conveniences such as air conditioning.



Indoor Spaces

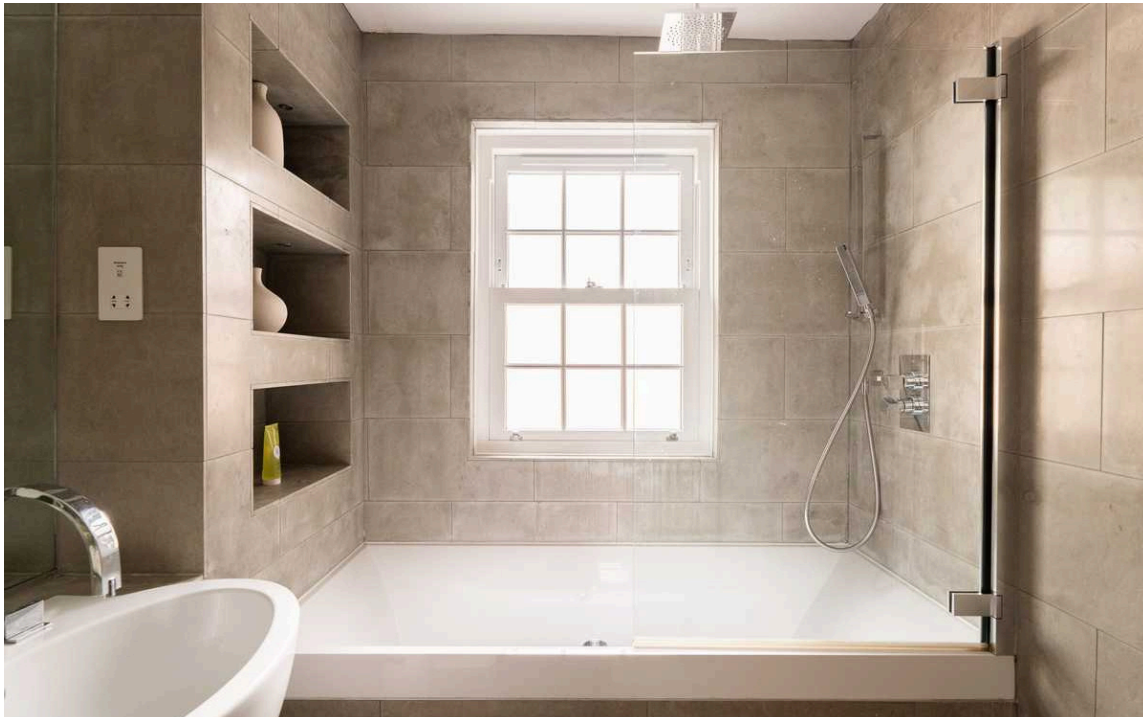
Entering the house on the ground floor, the front door opens directly onto a large reception room occupying the entire level. This includes a seating area and an open-plan kitchen with a dining area. Wooden floors and kitchen units give this space a sense of harmony and sophistication.

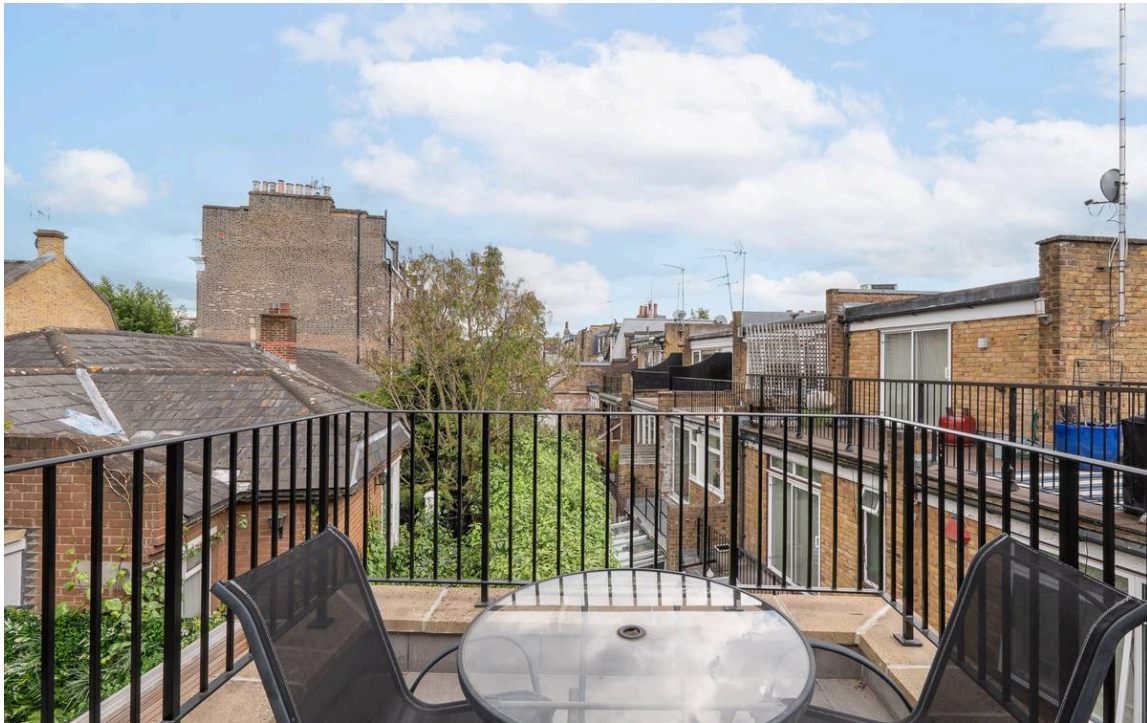


The Bedrooms

The first floor offers a double bedroom and study. The study has French windows leading to a rear terrace. Furthermore, the second floor features a principal bedroom with ensuite bathroom, inbuilt storage and south-facing bifolding doors that open directly onto the roof terrace.

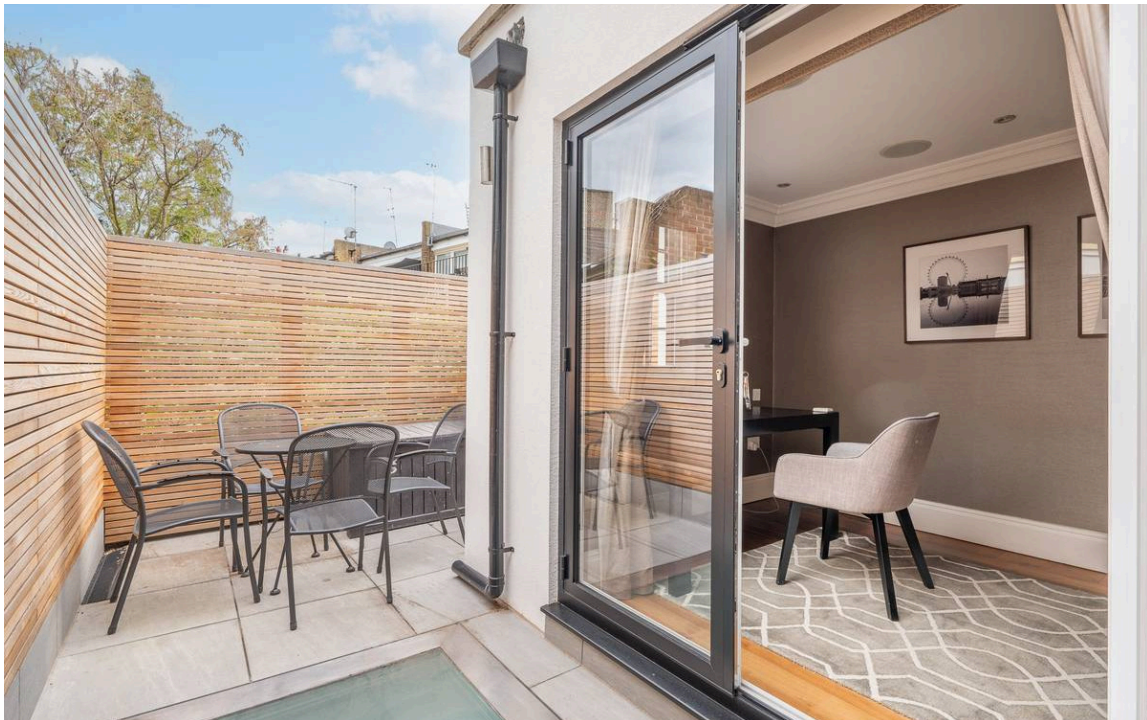
Downstairs is a bedroom with an ensuite bathroom and double French doors giving access to a patio. In addition, this floor contains a comfortable family television room and a guest WC.





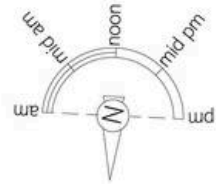
Outdoor Spaces

The house includes a pair of south-facing terraces with enough space for outdoor seating. The first-floor terrace has wooden fencing for privacy, while the second-floor terrace has beautiful garden views.



The Neighbourhood

Elystan Place is lined with an attractive mix of architecture from across the late nineteenth and twentieth centuries. It leads towards Chelsea Green, which is now the neighbourhood's gastronomic centre, offering a range of delis, cafes and restaurants. The many shopping options of the King's Road are equally close, while Sloane Square station is also nearby.



Elystan Place, SW₃

**RUSSELL
SIMPSON**

Approximate Internal Area

1,688 sq ft/ 157 sq m

Including limited use area

11 sq ft/ 1 sq m

Outside Area

274 sq ft/ 25 sq m

This plan is for layout guidance only. Not drawn to scale unless stated. Windows and door openings are approximate. Whilst every care is taken in the preparation of this plan, please check all dimensions, shapes, and compass bearings before making any decisions reliant upon them.



**RUSSELL
SIMPSON**

Contact Us

+44 (0) 20 7225 0277

151A Sydney Street
London
SW3 6NT

chelsea@russellsimpson.co.uk