



**RUSSELL  
SIMPSON**

Delightful mews house close to the  
Fulham Road

ELM PARK LANE  
CHELSEA SW3

Elm Park Lane

Let

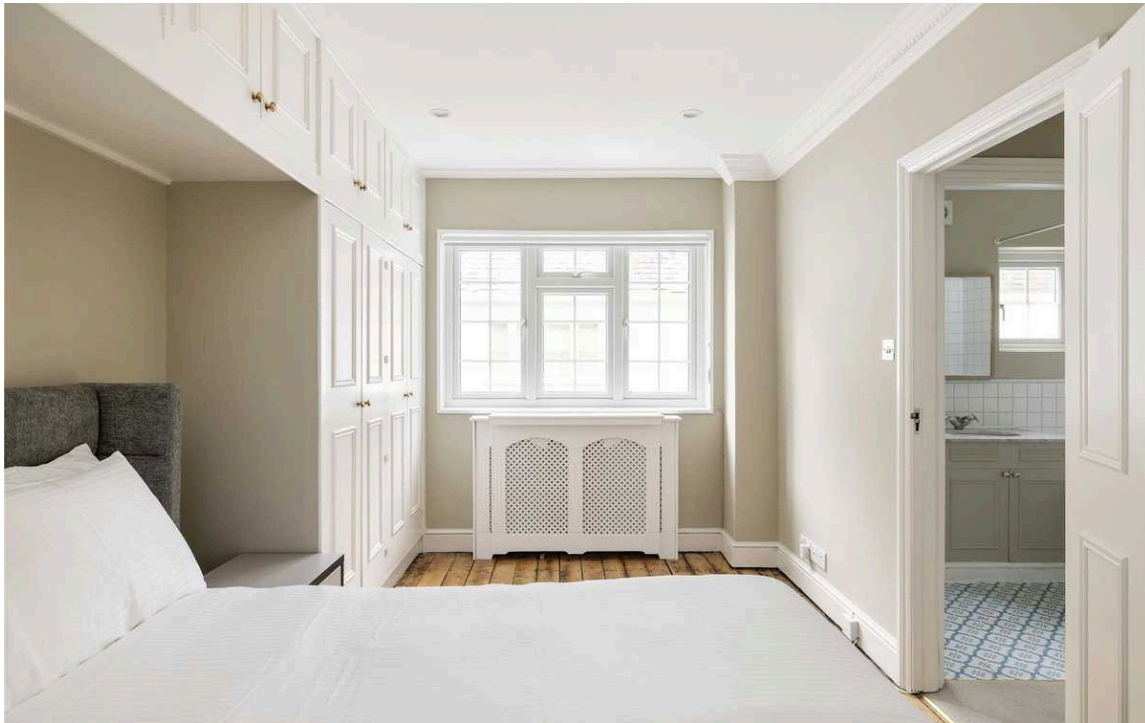
BEDROOMS 2	INTERNAL 767 SQ FT	OUTDOOR —	FURNISHED STATUS Furnished
BATHROOMS 1	71 SQM	EPC E	COUNCIL TAX RBKC, G



## The Property

Two-bedroom house in a charming Chelsea mews decorated in a graceful style.





## Indoor Spaces

On the ground floor, the entrance hall opens onto a kitchen with a small dining area, and a reception room with a working fireplace. Both the downstairs rooms have bay windows looking out onto the mews.

Upstairs, on the first floor, there is a principal bedroom with built-in storage, and a second bedroom opposite. The two rooms share a bathroom with a panelled bath, while the staircase and landing are lit by skylights. The property also has wooden floors in both the downstairs and upstairs rooms.





## The Neighbourhood

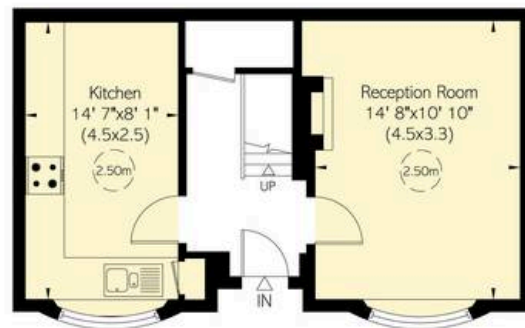
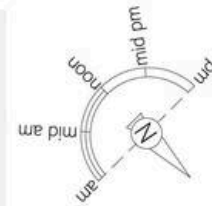
Elm Park Lane is in a quiet, part-cobbled mews in the Chelsea Park/Carlyle conservation area. The two-storey properties have plain or painted brickwork facades, while the entrance gates, with carved lions on top, add to the sense of privacy and a village-like community. Elm Park Lane is within easy reach of the shops and restaurants of the Fulham Road and the King's Road. In addition, South Kensington and Gloucester Road underground stations are both in walking distance.

# Elm Park Lane, SW3 **RUSSELL SIMPSON**

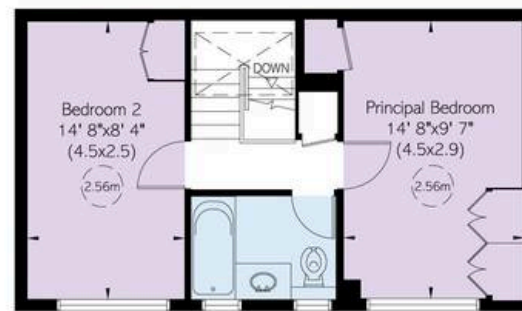
## Approximate Internal Area

767 sq ft / 71 sq m

This plan is for layout guidance only. Not drawn to scale unless stated. Windows and door openings are approximate. Whilst every care is taken in the preparation of this plan, please check all dimensions, shapes, and room placements before making any decisions reliant upon them.



Ground Floor



First Floor

**RUSSELL  
SIMPSON**

---

## Contact Us

+44 (0) 20 7225 0277

Contact us

[info@russellsimpson.co.uk](mailto:info@russellsimpson.co.uk)

---

## Sydney Street

+44 (0) 20 7225 0277

151A Sydney Street

London

SW3 6NT

[chelsea@russellsimpson.co.uk](mailto:chelsea@russellsimpson.co.uk)

---

## Kensington Square

+44 (0) 20 3761 9691

13 Kensington Square

London

W8 5HD

[kensington@russellsimpson.co.uk](mailto:kensington@russellsimpson.co.uk)