



**RUSSELL
SIMPSON**

Elegant three-bedroom mews house
with private terrace in Belgravia

EATON MEWS NORTH
BELGRAVIA SW1X

Eaton Mews North

£14,000 P/M

<div>BEDROOMS</div> <div>3</div>	<div>INTERNAL</div> <div>2,411 <small>SQ FT</small></div> <div>223 <small>SQM</small></div>	<div>OUTDOOR</div> <div>249 <small>SQ FT</small></div>	<div>FURNISHED STATUS</div> <div>Furnished</div>
<div>BATHROOMS</div> <div>4</div>		<div>EPC</div> <div>D</div>	<div>COUNCIL TAX</div> <div>Westminster City, H</div>



The Property

A beautifully presented mews house arranged over four floors in this cobbled street.

Stepping into the house, the ground floor features a generous reception room filled with light from large windows, alongside a sleek modern kitchen and dining area. The kitchen is fitted with contemporary units and features a breakfast bar, while the dining area accommodates a substantial table beneath an elegant pendant lighting.





The Bedrooms

The first floor comprises two well-proportioned bedrooms, including one with an en-suite bathroom, plus a separate dressing room. This floor also features access to a large private terrace.

Beyond is the second floor, home to the principal bedroom with its own en-suite bathroom, both decorated in a contemporary fashion. The property also includes a useful basement level with a reception room and office space, plus utility areas.





Outdoor Spaces

The property includes a large private terrace, providing enough space for outdoor seating and featuring decorative stone elements including an attractive wall fountain. The property also has a garage on the ground floor.



The Neighbourhood

Eaton Mews North is a picturesque cobbled mews, originally built to provide stables for the grand houses of Belgravia. The quiet residential address is moments away from the shops and restaurants of Sloane Square, with the green spaces of Eaton Square Garden nearby. The area is well-connected, with Victoria and Sloane Square stations within walking distance, providing excellent transport links across London.

The mews retains its village-like character while being situated in one of London's most prestigious neighbourhoods, offering both tranquillity and convenience in the heart of SW1.

Eaton Mews North, SW1

**RUSSELL
SIMPSON**

Approximate Internal Area

3,411 sq ft/ 314 sq m

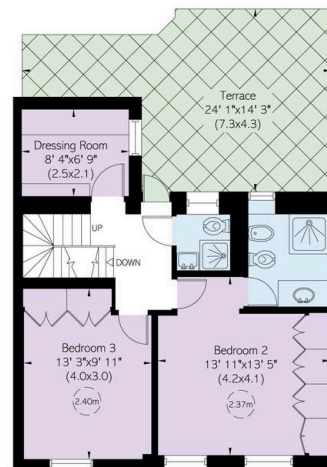
Including limited use area

18 sq ft/ 2 sq m

Outside Area

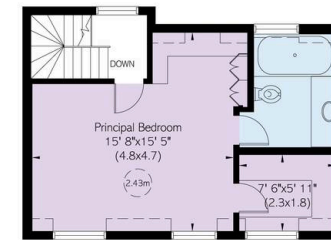
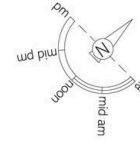
250 sq ft/ 23 sq m

This plan is for layout guidance only. Not drawn to scale unless stated. Windows and door openings are approximate. Whilst every care is taken in the preparation of this plan, please check all dimensions, shapes, and compass bearings before making any decisions reliant upon them.

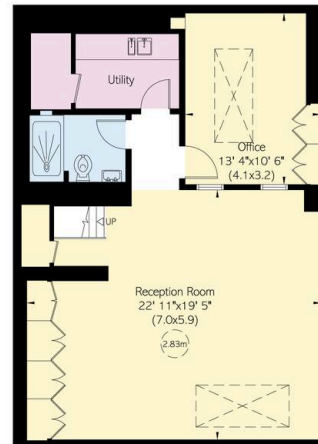


First Floor

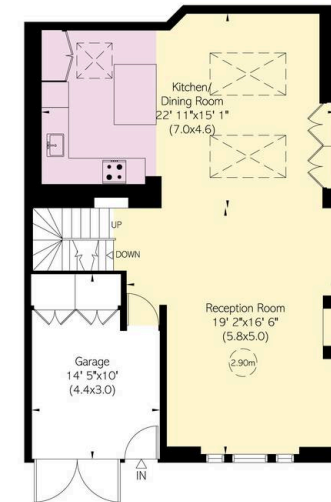
Reduced head height below 1.5m



Second Floor



Basement



Ground Floor

**RUSSELL
SIMPSON**

Contact Us

+44 (0) 20 7225 0277

151A Sydney Street
London
SW3 6NT

chelsea@russellsimpson.co.uk

In accordance with the Property Mis-Description Act 1991, the following details have been prepared in good faith, and are not intended to constitute part of an offer or contract. Any information contained herein (whether in the text, plans or photographs) is given in good faith but should not be relied upon as being a statement of representation of fact. Nothing in these Particulars shall be deemed to be a statement that the property is in good condition or otherwise nor that any services or facilities are in good working order. Any measurements of distances referred to herein are approximate only. October 2021