



RUSSELL SIMPSON

A characterful second-floor
apartment in a distinguished
Mayfair red brick address

DOWN STREET
MAYFAIR W1J

Down Street

£1,350 P/W

BEDROOMS 1	INTERNAL 790 <small>SQ FT</small>	OUTDOOR —	FURNISHED STATUS Furnished
BATHROOMS 1	73 <small>SQM</small>	EPC C	COUNCIL TAX Westminster City, F

The Property

A well-presented apartment on the second floor of a handsome period building, accessed by lift.

Entering the flat on the second floor, the entrance hall sets an immediately distinctive tone — orange diamond-pattern wallpaper, an octagonal mirror, and recessed ceiling lighting create an eclectic and inviting arrival space.

The reception room is the heart of the apartment and a space of considerable character. An ornate wooden fireplace with a working surround serves as the focal point, above which sits a striking sunburst mirror. The ceiling features geometric moulded cornicing that adds to the sense of period grandeur. Tall windows dressed with sheer and check-patterned curtains allow natural light to fill the space. A bookshelf lines one wall, adding to the room's refined, lived-in charm.

The kitchen is set back from the reception room and fitted with glossy neutral cabinets and dark stone countertops. An integrated oven and stainless steel sink are present, and a large arched window brings in superb natural light and offers an outlook onto the building's characterful brick surroundings. Wooden flooring runs underfoot.





The Bedroom

The bedroom is a well-proportioned room with a large window dressed in layered sheer and checked curtains, carpeted flooring, and framed artwork on the walls. The room has a calm, classic feel. The bathroom features a bath with a wood-panelled surround, a shower over the bath, light stone-effect tiling throughout, a narrow window, and a wooden-framed mirror.

The Neighbourhood

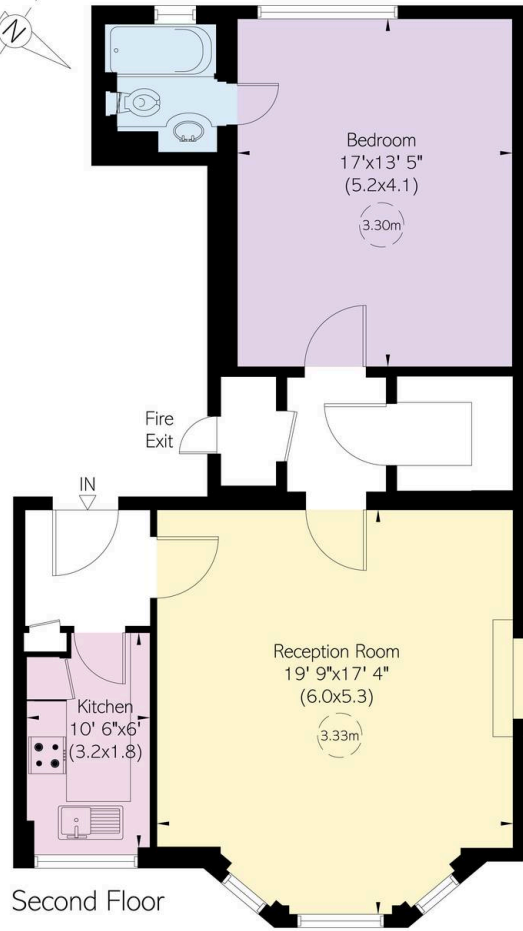
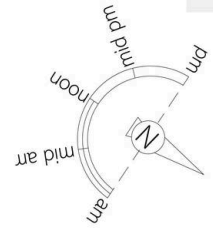
Down Street is a discreet and attractive address in the heart of Mayfair, one of London's most upmarket neighbourhoods. The open spaces of Green Park and Hyde Park are within easy reach, alongside exceptional restaurants, boutiques, and galleries that define this part of the city. Green Park station is a few moments' walk away, with Hyde Park Corner also close by, providing superb connections across London.

Down Street, W1

**RUSSELL
SIMPSON**

Approximate Internal Area
790 sq ft / 73 sq m

This plan is for layout guidance only. Not drawn to scale unless stated. Windows and door openings are approximate. Whilst every care is taken in the preparation of this plan, please check all dimensions, shapes, and compass bearings before making any decisions reliant upon them.



**RUSSELL
SIMPSON**

Contact Us

+44 (0) 20 7225 0277

151A Sydney Street
London
SW3 6NT

chelsea@russellsimpson.co.uk