

**RUSSELL
SIMPSON**

Sophisticated two-bedroom
apartment in the heart of Mayfair

DOVER STREET
MAYFAIR W1S

Dover Street

£1,500 _{P/W}

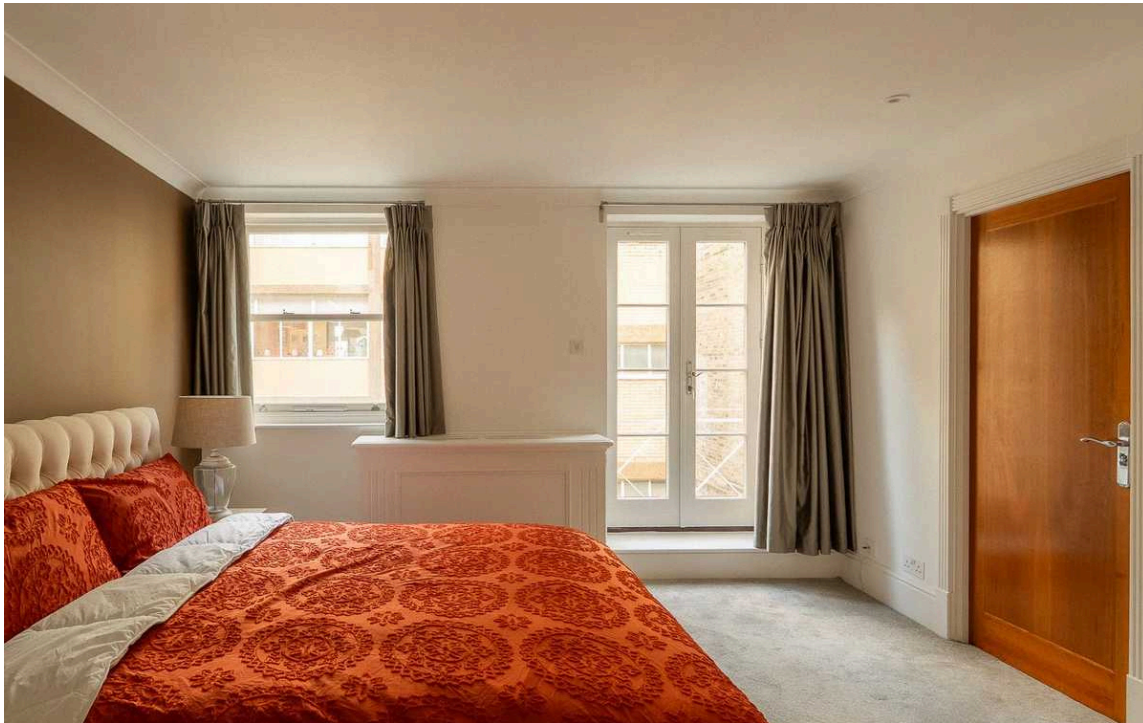
BEDROOMS 2	INTERNAL 1,023 _{SQ FT} 95 _{SQM}	OUTDOOR 5 _{SQ FT}	FURNISHED STATUS Furnished
BATHROOMS 2		EPC C	COUNCIL TAX Westminster City, H

The Property

Beautifully designed apartment presented in superb condition.

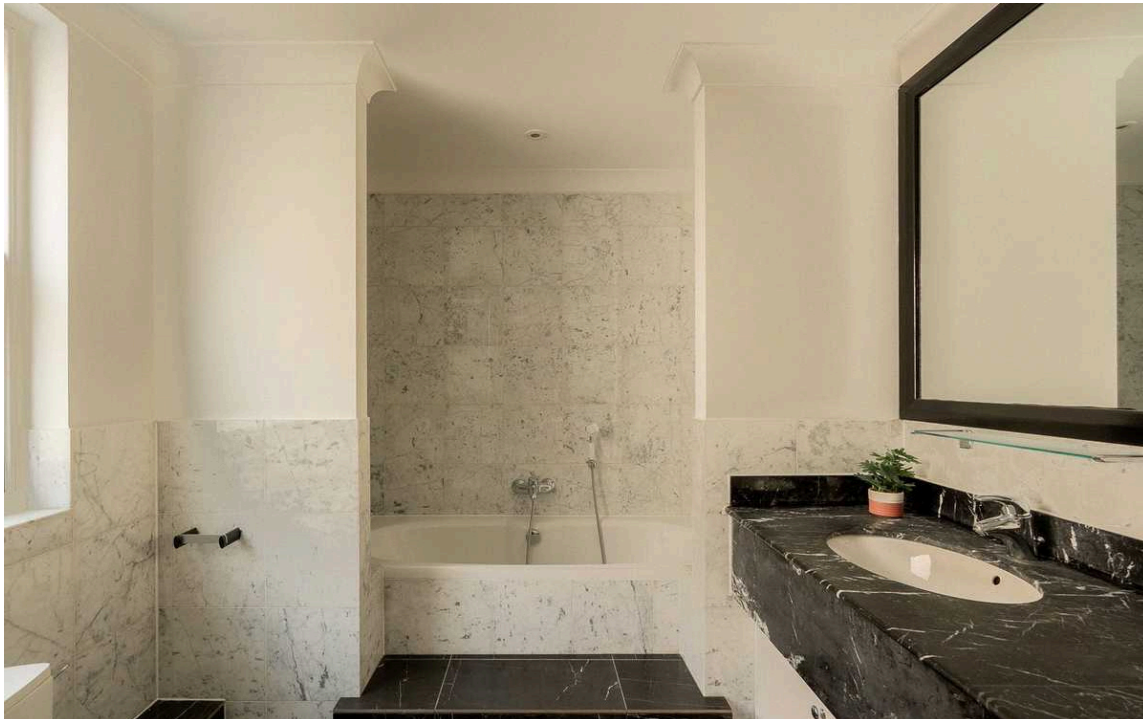
Entering the flat on the third floor, a welcoming corridor leads through to the heart of the home - a generous open-plan reception, dining and kitchen area. The reception room is filled with light and provides ample space for seating and dining. The contemporary kitchen features high-gloss fitted units with integrated appliances.





The Bedrooms

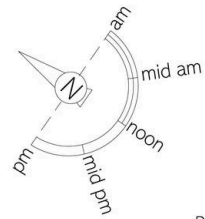
There are two well-proportioned bedrooms, both of which are en-suites and feature built-in storage. Both bedrooms have French doors opening to private balconies. A guest washroom completes this apartment.





The Neighbourhood

Dover Street is a quiet residential address in the heart of Mayfair, moments away from the sophisticated shopping of Bond Street and the upmarket boutiques of New Bond Street. The world-renowned galleries and auction houses of Cork Street are within easy reach, while the open spaces of Green Park provide a peaceful retreat from the bustling West End. Many restaurants and shops line the nearby streets, from the luxury department stores of Oxford Street to the refined dining establishments throughout Mayfair. Bond Street and Green Park stations are a short walk away, providing excellent transport connections across London via the Central, Jubilee and Piccadilly lines. The artistic treasures of the Royal Academy and the elegant squares of Berkeley and Grosvenor are all within walking distance.



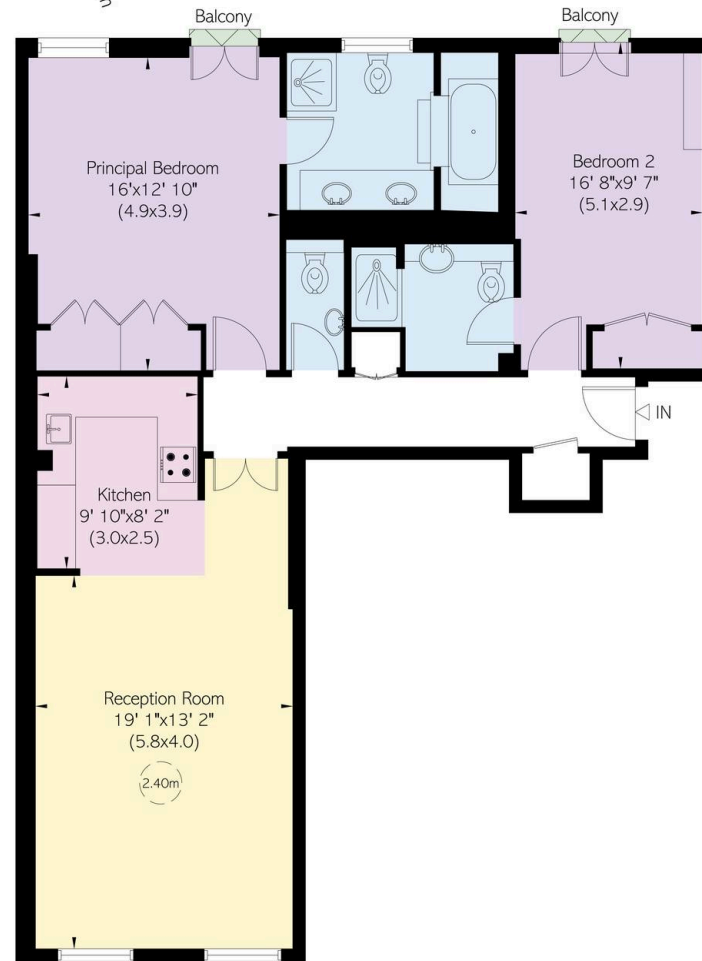
Dover Street, W1

**RUSSELL
SIMPSON**

Approximate Internal Area
1,023 sq ft/ 95 sq m

Outside Area
5 sq ft/ 0.4 sq m

This plan is for layout guidance only. Not drawn to scale unless stated. Windows and door openings are approximate. While every care is taken in the preparation of this plan, please check all dimensions, shapes, and compass bearings before making any decisions reliant upon them.



Third Floor

**RUSSELL
SIMPSON**

Contact Us

+44 (0) 20 3761 9691

mayfair@russellsimpson.co.uk

In accordance with the Property Mis-Description Act 1991, the following details have been prepared in good faith, and are not intended to constitute part of an offer or contract. Any information contained herein (whether in the text, plans or photographs) is given in good faith but should not be relied upon as being a statement of representation of fact. Nothing in these Particulars shall be deemed to be a statement that the property is in good condition or otherwise nor that any services or facilities are in good working order. Any measurements of distances referred to herein are approximate only. October 2021