

RUSSELL SIMPSON

Attractive and convenient one-
bedroom flat on a special mews near
Gloucester Road station

DE VERE MEWS
KENSINGTON W8

De Vere Mews

Let

BEDROOMS 1	INTERNAL 697 SQ FT 64 SQM	OUTDOOR —	FURNISHED STATUS Furnished
BATHROOMS 1		EPC D	COUNCIL TAX RBKC, E

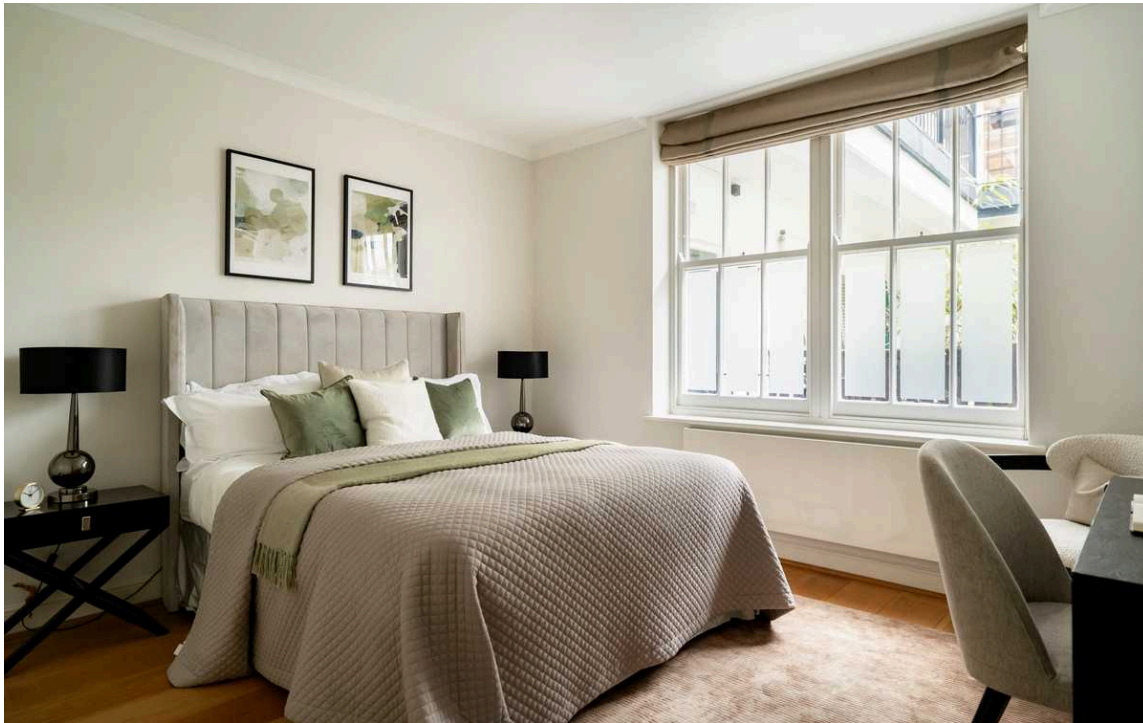


The Property

Well-proportioned flat in a unique gated mews close to Kensington Gardens and Hyde Park

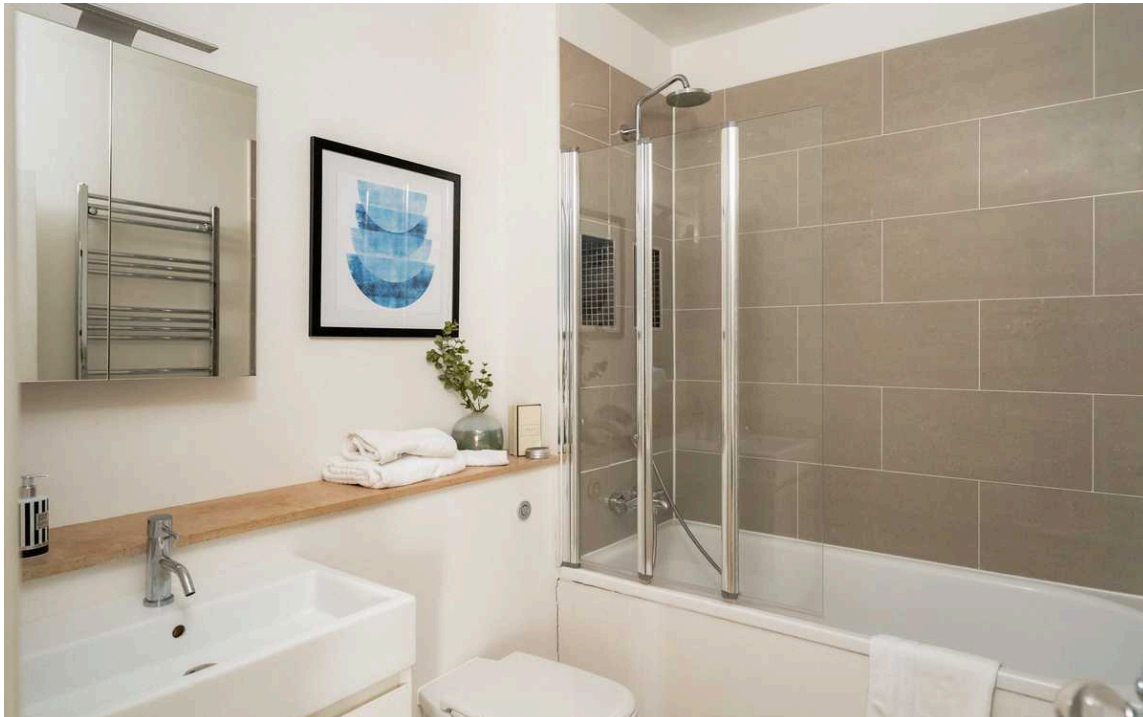
Stepping into the flat on the first floor, the front hall opens onto a generous reception room. This includes inbuilt storage, enough space for separate dining and seating areas, and an open-plan kitchen. Meanwhile, three window bays bring in plenty of light.





Indoor Spaces

On the other side of the flat is a bedroom, a bathroom with a bath, a guest WC and further storage space. The flat is decorated in a tasteful style, with wooden floors creating a sense of elegance throughout, while glass-panelled doors add to the brightness and space. It is presented in good condition.





The Neighbourhood

De Vere Mews is a private, gated mews with a paved central garden and balconies lining the internal courtyard. It runs off Canning Place, a quiet street leading between Gloucester Road and St Albans Grove. From here, Gloucester Road underground station is close, while the open spaces of Hyde Park and Kensington Gardens are within walking distance.

The restaurants and independent shops of Victoria Grove are also nearby, creating a village-like atmosphere.

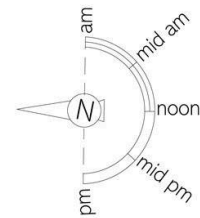


De Vere Mews, W8

Approximate Internal Area
697 sq ft/ 65 sq m

**RUSSELL
SIMPSON**

This plan is for layout guidance only. Not drawn to scale unless stated. Windows and door openings are approximate. Whilst every care is taken in the preparation of this plan, please check all dimensions, shapes, and compass bearings before making any decisions reliant upon them.



**RUSSELL
SIMPSON**

Contact Us

+44 (0) 20 3761 9691

13 Kensington Square
London
W8 5HD

kensington@russellsimpson.co.uk