



## **RUSSELL SIMPSON**

Unique Grade II listed Georgian  
townhouse with exceptional interiors  
and roof terrace

D'ARBLAY STREET  
SOHO W1F

D'Arblay Street

Let

BEDROOMS 3-4	INTERNAL 3,417 SQ FT	OUTDOOR 366 SQ FT	FURNISHED STATUS Furnished
BATHROOMS 3	317 SQM	EPC D	COUNCIL TAX Westminster City, H

## The Property

Stucco-fronted property with three/four bedrooms on a historic street in the heart of Soho

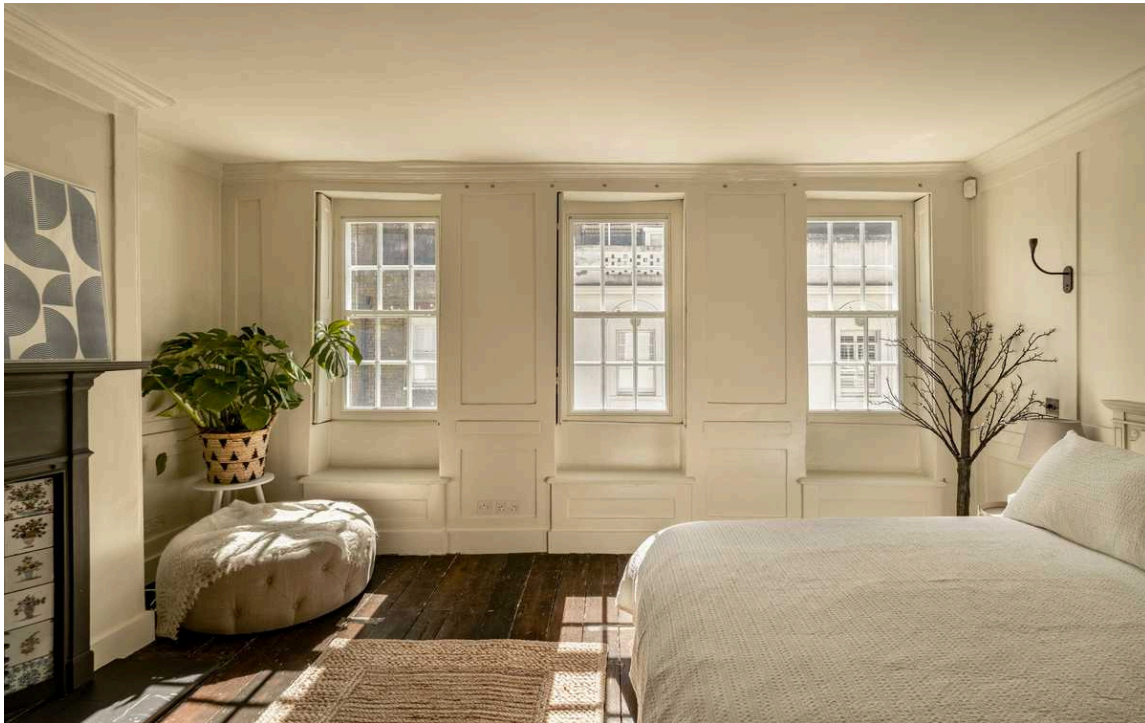
Entering the house on the ground floor, the front hall opens onto a double reception room divided by a folding door. This floor also features a guest WC and a generous kitchen with wooden floors, fitted units, and an overhead skylight.



## Double Drawing Room

The first floor includes an impressive double drawing room with three south-facing window bays bringing in plentiful daylight. The other half of this floor features a versatile space that can be used as either dining room or an additional study.

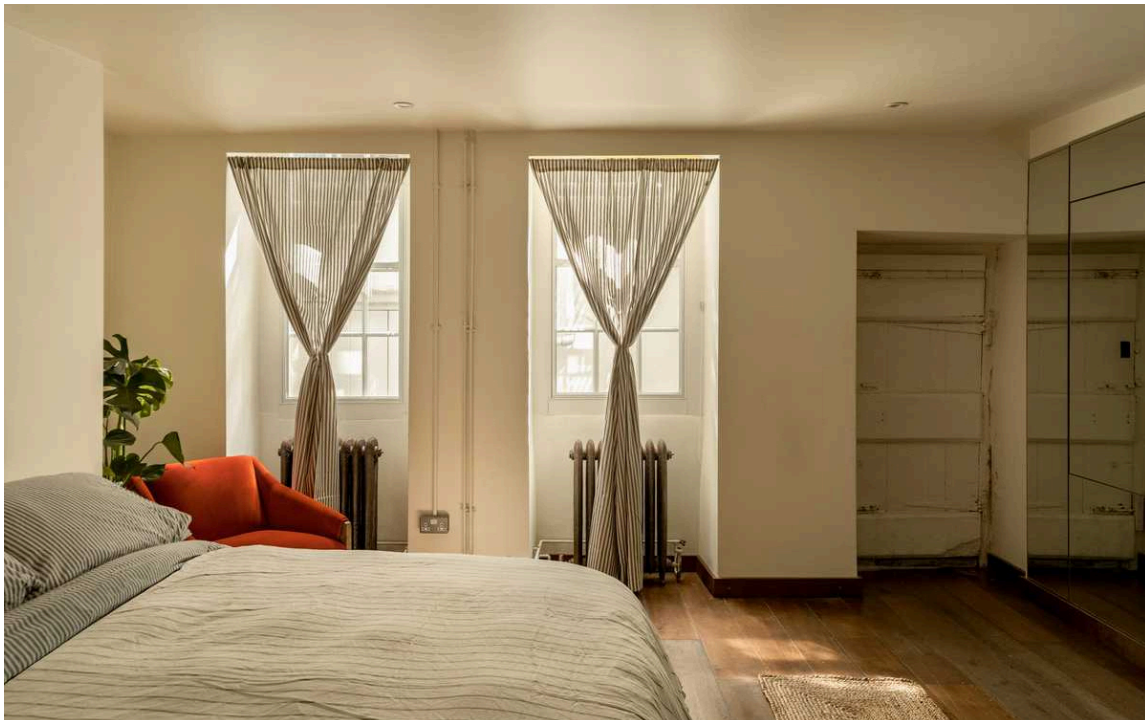




## The Bedrooms

The second floor is entirely occupied by the principal bedroom suite, including a bedroom, a bathroom with a bath, and considerable storage space. The third floor offers another bedroom with an ensuite bathroom and a spectacular vaulted ceiling.

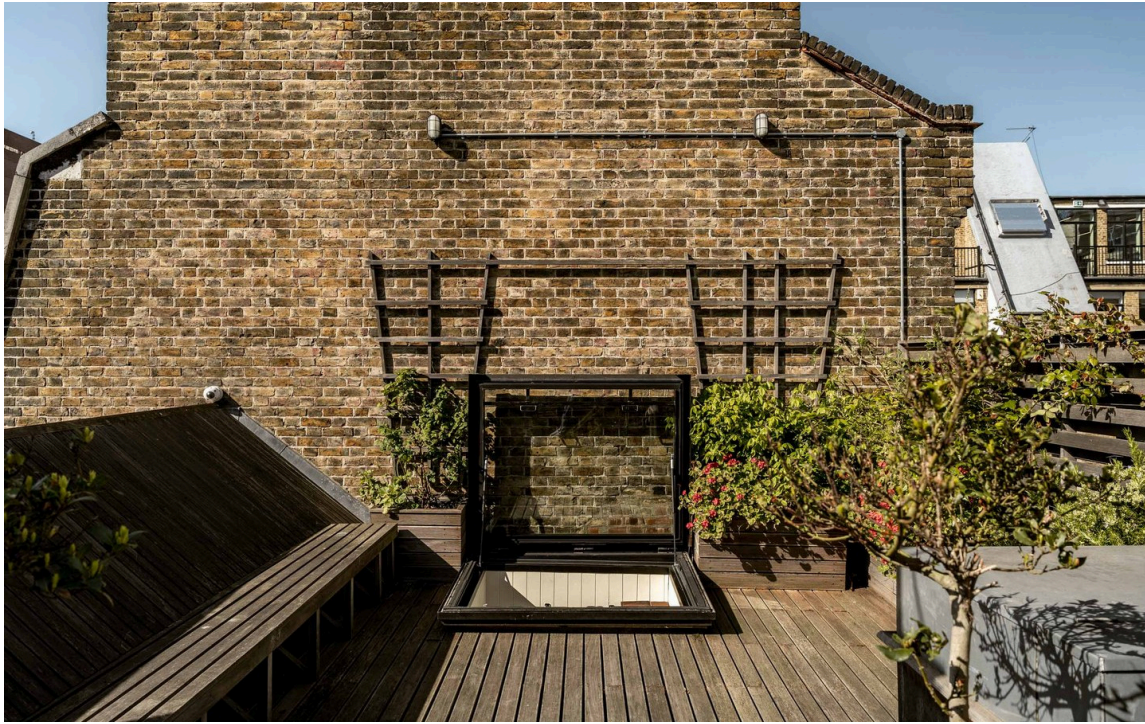
The lower ground floor contains a bedroom, a sauna, a cellar and further storage space.





## The Design

The interiors blend tasteful classical design with original features such as wooden beams, exposed brickwork, attractive fireplaces and elegant panelled walls for the living spaces. The flexible layout means it could easily become a five-bedroom property.



## Outdoor Spaces

The house includes a roof terrace with wooden decking and beautiful views. There is also a second terrace accessed from the first floor.



## The Neighbourhood

D'Arbly Street in Soho was named the novelist, diarist and playwright Frances Burney, later Madame d'Arbly. One of the leading novelists of the Georgian Era, her childhood home was on nearby Poland Street. The earliest buildings on the street – including this house – date to the year 1740, while the public house at the end of the road is equally historic.

From here, many of central London's most popular neighbourhoods are within walking distance. This includes Covent Garden, Leicester Square and the theatres of the West End. Oxford Circus station is also close, while the restaurants and shops of Carnaby Street are within easy reach.

# D'Arblay Street, W1

**RUSSELL SIMPSON**


**Approximate Internal Area**  
3,417 sq ft / 317 sq m

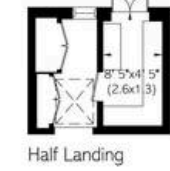
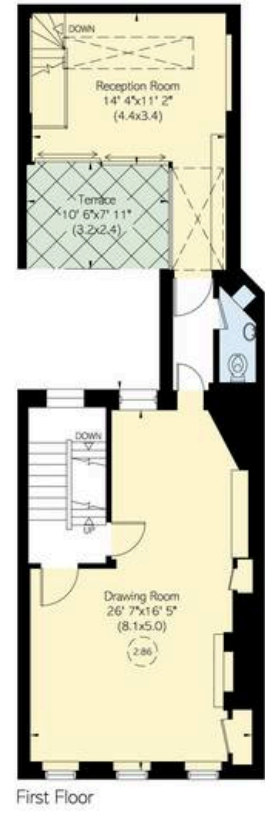
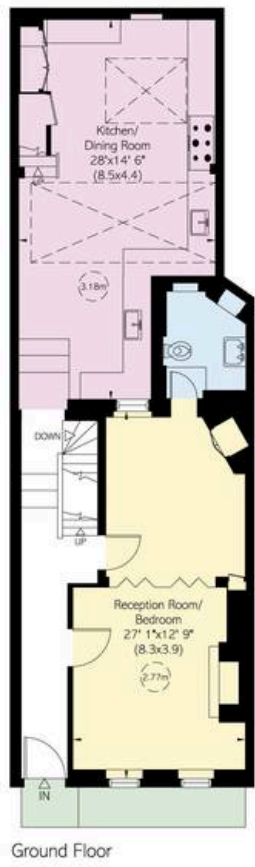
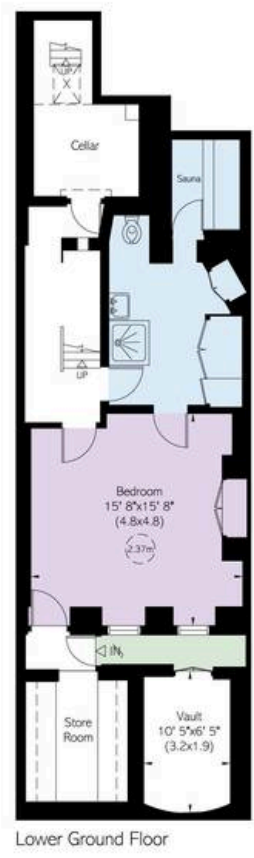
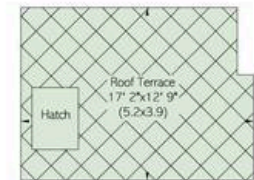
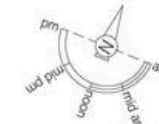
**Including limited use area and vault**

159 sq ft / 15 sq m

**Outside Area**  
367 sq ft / 34 sq m

This plan is for layout guidance only. Not drawn to scale unless stated. Windows and door openings are approximate. Whilst every care is taken in the preparation of this plan, please check all dimensions, shapes, and compass bearings before making any decisions reliant upon them.

 Reduced head height below 1.5m



**RUSSELL  
SIMPSON**

---

## Contact Us

+44 (0) 203 815 9144

[mayfair@russellsimpson.co.uk](mailto:mayfair@russellsimpson.co.uk)

In accordance with the Property Mis-Description Act 1991, the following details have been prepared in good faith, and are not intended to constitute part of an offer or contract. Any information contained herein (whether in the text, plans or photographs) is given in good faith but should not be relied upon as being a statement of representation of fact. Nothing in these Particulars shall be deemed to be a statement that the property is in good condition or otherwise nor that any services or facilities are in good working order. Any measurements of distances referred to herein are approximate only. October 2021