

## **RUSSELL SIMPSON**

Sophisticated three-bedroom  
apartment in prestigious Mayfair  
location

CURZON STREET  
MAYFAIR W1J

Curzon Street

£2,995 <sub>P/W</sub>

BEDROOMS 3	INTERNAL  1,384 <sub>SQ FT</sub>  128 <sub>SQM</sub>	OUTDOOR  —	FURNISHED STATUS  Furnished
BATHROOMS 2		EPC C	COUNCIL TAX Westminster City, H

## The Property

A beautifully designed third-floor apartment presented in superb condition.

Stepping into the flat, you are greeted by a generous reception room with lofty proportions that creates a sense of scale and elegance. The space is filled with light and decorated in a contemporary fashion, featuring sophisticated furnishings and refined design elements.

The well-proportioned dining room provides a charming space for formal entertaining, whilst the modern kitchen is fitted with sleek units and contemporary appliances, complemented by access to natural light through large windows.







## The Bedrooms

The accommodation comprises three bedrooms, including a spacious principal bedroom with beautifully proportioned dimensions. The second bedroom offers generous space and bright aspects, whilst the third bedroom, though more intimate in scale, maintains the apartment's elegant character. The property features well-appointed bathroom facilities throughout.



## The Design

High ceilings throughout the apartment add to the sense of brightness and space, whilst the contemporary design elements create a calm, sophisticated atmosphere. The flat benefits from excellent natural light and has been decorated in a graceful style that maximises the sense of elegance.







## The Neighbourhood

Curzon Street is an attractive address in the heart of Mayfair, moments away from the renowned shops and restaurants of Bond Street and Berkeley Square. The building benefits from porter service, adding to the convenience and security of this prestigious location. Green Park station is a short walk away, providing excellent transport connections across London.

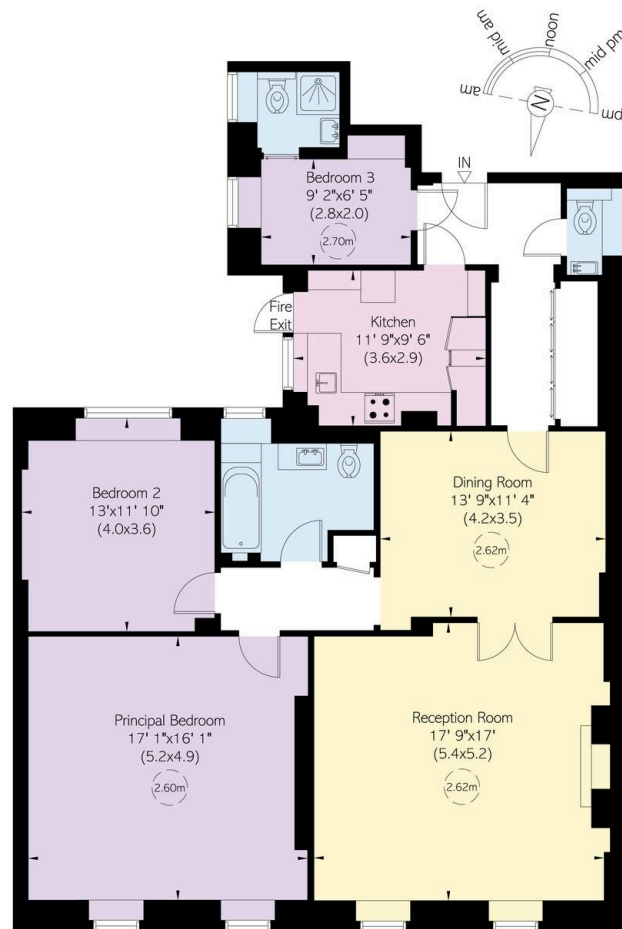
The property is situated within one of London's most sought-after neighbourhoods, with Hyde Park nearby and the cultural attractions of the West End just moments away.

## Curzon Street, W1

**Approximate Internal Area**  
1,384 sq ft/ 129 sq m

**RUSSELL  
SIMPSON**

This plan is for layout guidance only. Not drawn to scale unless stated. Windows and door openings are approximate. Whilst every care is taken in the preparation of this plan, please check all dimensions, shapes, and compass bearings before making any decisions reliant upon them.



Third Floor

**RUSSELL  
SIMPSON**

---

## Contact Us

+44 (0) 20 3761 9691

[mayfair@russellsimpson.co.uk](mailto:mayfair@russellsimpson.co.uk)

In accordance with the Property Mis-Description Act 1991, the following details have been prepared in good faith, and are not intended to constitute part of an offer or contract. Any information contained herein (whether in the text, plans or photographs) is given in good faith but should not be relied upon as being a statement of representation of fact. Nothing in these Particulars shall be deemed to be a statement that the property is in good condition or otherwise nor that any services or facilities are in good working order. Any measurements of distances referred to herein are approximate only. October 2021