



RUSSELL SIMPSON

Beautiful four-bedroom house to
rent with private garage in
Westminster

COWLEY STREET
WESTMINSTER SW1P

Cowley Street

£1,800 _{P/W}

<div>BEDROOMS</div> <div>4</div>	<div>INTERNAL</div> <div>1,819 _{SQ FT}</div> <div>168 _{SQM}</div>	<div>OUTDOOR</div> <div>383 _{SQ FT}</div>	<div>FURNISHED STATUS</div> <div>Unfurnished</div>
<div>BATHROOMS</div> <div>2</div>		<div>EPC</div> <div>D</div>	<div>COUNCIL TAX</div> <div>Westminster City, H</div>

The Property

Grade II* listed five-storey Georgian house with a south-facing garden on a historic street near the Houses of Parliament.



img 1

Fully Equipped Kitchen

img 2

Light Filled Reception Room



Indoor Spaces

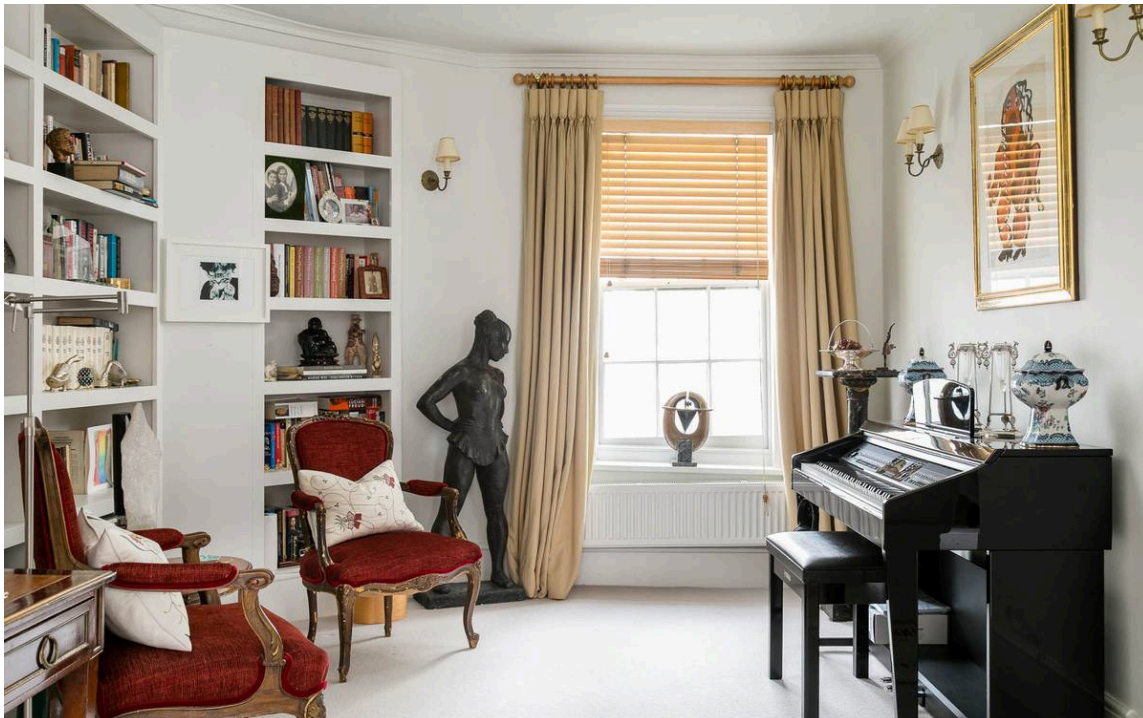
Entering the house on the ground floor, the corridor opens onto a generous open-plan kitchen, with an eating area at the front and a rear balcony overlooking the garden.

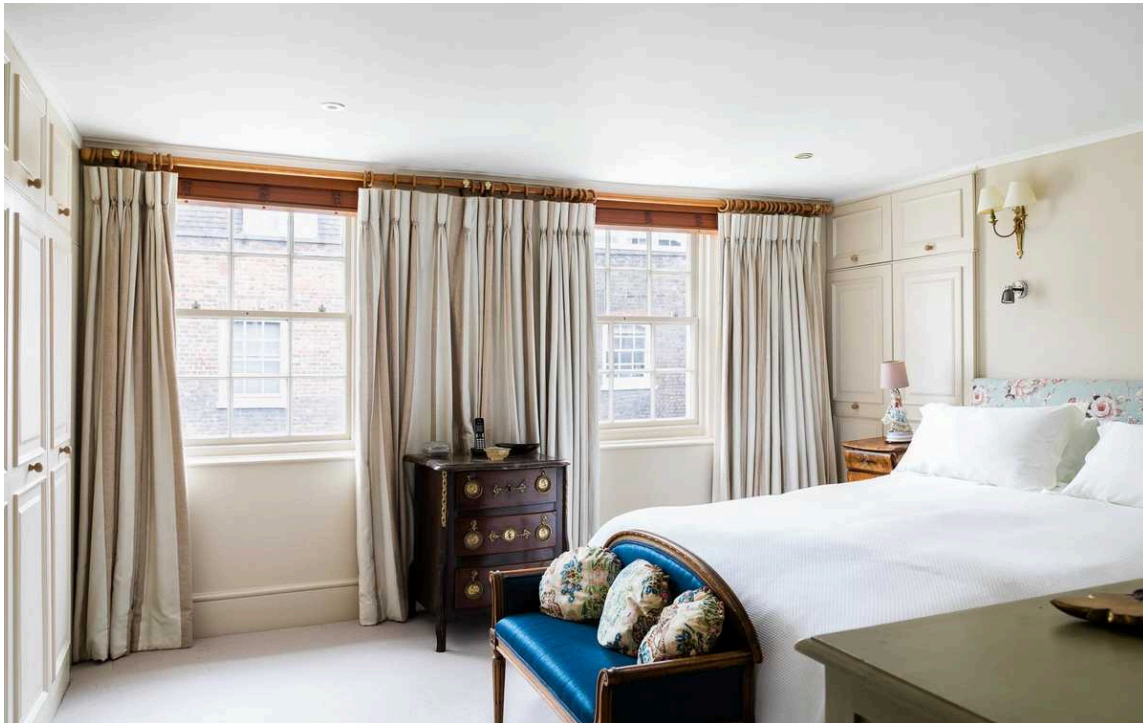
img 1

Kitchen

img 2

Reception Room





The Bedrooms

Downstairs, on the lower ground floor, is a spacious bedroom with inbuilt storage. This floor also contains separate access to the street, a guest loo, and a study with French windows leading out to the garden.

Upstairs, on the first floor, is a grand reception occupying the entire level, with inbuilt shelving and cupboards. Upstairs again, on the second floor, is a principal bedroom with ensuite bathroom, again occupying the entire level. Finally, on the third floor, two more bedrooms share a bathroom.

img 1

Principal Bedroom

img 2

Large Bathroom





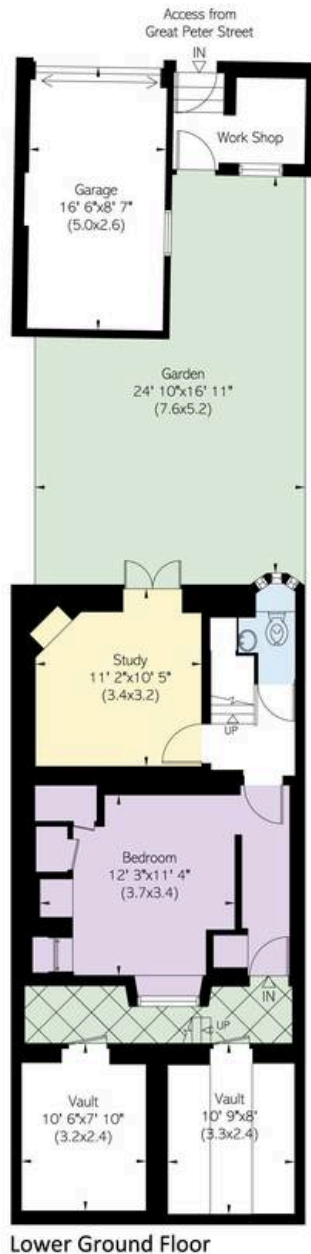
Outdoor Spaces

The house is decorated in a traditional and tasteful fashion, with elegant fireplaces and panelled doors to evoke its three centuries of history.

The house includes a paved garden, with space enough for outdoor eating. The garden ends with a private parking place, as well as small workshop with a back door, allowing access to nearby Great Peter Street. In addition, at the front of the house, a pair of vaults under the street allow for cellar-like storage.

The Neighbourhood

The house was built in 1722, part of a neighbourhood of well-preserved Georgian houses. The celebrated actor, Sir John Gielgud lived next door, and the area was historically popular with politicians and aristocrats. The Houses of Parliament are within walking distance, as well as Westminster Abbey, the concert space of St John Smith's Square, and the riverside lawns of Victoria Tower Gardens.



Lower Ground Floor

Cowley Street, SW1

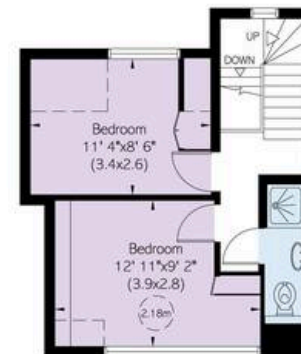
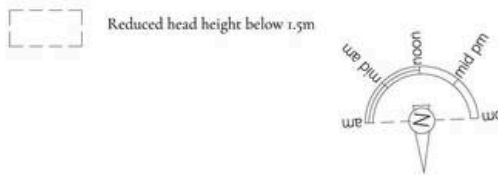
RUSSELL SIMPSON

Approximate Internal Area
3,193 sq ft/ 295 sq m

Including limited use area, vaults, work shop and garage
3,74 sq ft/ 35 sq m

Outside Area
474 sq ft/ 44 sq m

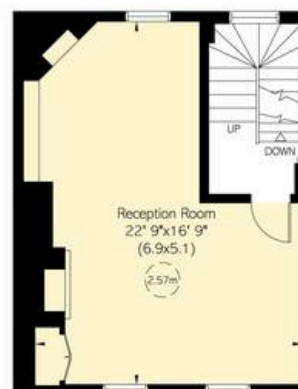
This plan is for layout guidance only. Not drawn to scale unless stated. Windows and door openings are approximate. Whilst every care is taken in the preparation of this plan, please check all dimensions, shapes, and compass bearings before making any decisions reliant upon them.



Third Floor



Ground Floor



First Floor



Second Floor

**RUSSELL
SIMPSON**

Contact Us

+44 (0) 20 3761 9691

13 Kensington Square
London
W8 5HD

kensington@russellsimpson.co.uk