



**RUSSELL
SIMPSON**

Bright one-bedroom apartment in
Earls Court

COURTFIELD GARDENS
EARLS COURT SW5

Courtfield Gardens

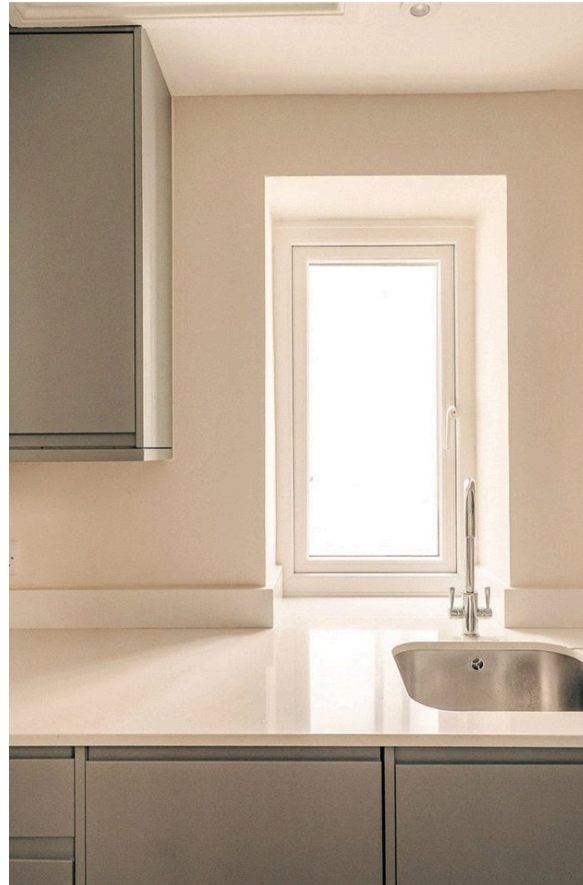
£625 P/W

<div>BEDROOMS</div> <div>1</div>	<div>INTERNAL</div> <div>498 <small>SQ FT</small></div> <div>46 <small>SQM</small></div>	<div>OUTDOOR</div> <div>—</div>	<div>FURNISHED STATUS</div> <div>Furnished</div>
<div>BATHROOMS</div> <div>1</div>		<div>EPC</div> <div>C</div>	<div>COUNCIL TAX</div> <div>RBKC, E</div>

The Property

Well-presented apartment with contemporary interiors

Entering the flat on the first floor, there is a bright reception room with a separate dining area. The space is decorated in neutral colours and benefits from good natural light. The separate kitchen features fitted units and there is integrated storage and space for modern appliances.





The Bedroom

The bedroom is a comfortable size with large windows overlooking trees and neighbouring buildings. The room has built-in storage. The bathroom includes both bath and shower and is presented in good condition.



The Neighbourhood

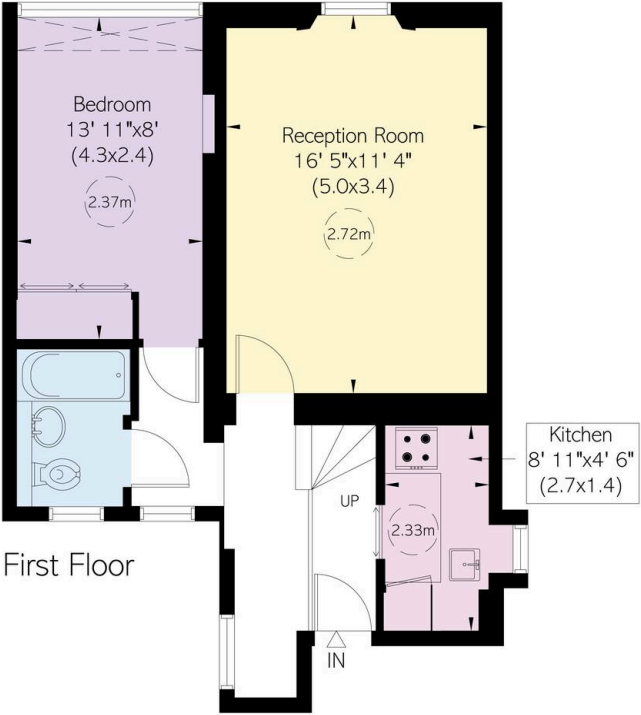
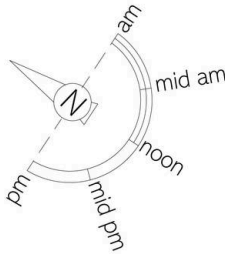
Courtfield Gardens is a quiet residential street in Earls Court, SW5. The location offers excellent transport links with Earls Court Underground station nearby, providing access to the District and Piccadilly lines. The area has a good selection of local shops, cafés and restaurants along Earls Court Road. Kensington Gardens and Hyde Park are within walking distance, while the cultural attractions of South Kensington, including the Natural History Museum and Victoria and Albert Museum, are also close by.

Courtfiled Gardens, SW5

**RUSSELL
SIMPSON**

Approximate Internal Area
498 sq ft/ 46 sq m

This plan is for layout guidance only. Not drawn to scale unless stated. Windows and door openings are approximate. Whilst every care is taken in the preparation of this plan, please check all dimensions, shapes, and compass bearings before making any decisions reliant upon them.



**RUSSELL
SIMPSON**

Contact Us

+44 (0) 20 7225 0277

151A Sydney Street
London
SW3 6NT

chelsea@russellsimpson.co.uk

In accordance with the Property Mis-Description Act 1991, the following details have been prepared in good faith, and are not intended to constitute part of an offer or contract. Any information contained herein (whether in the text, plans or photographs) is given in good faith but should not be relied upon as being a statement of representation of fact. Nothing in these Particulars shall be deemed to be a statement that the property is in good condition or otherwise nor that any services or facilities are in good working order. Any measurements of distances referred to herein are approximate only. October 2021