

RUSSELL SIMPSON

A newly refurbished three bedroom
flat in Cornwall Gardens

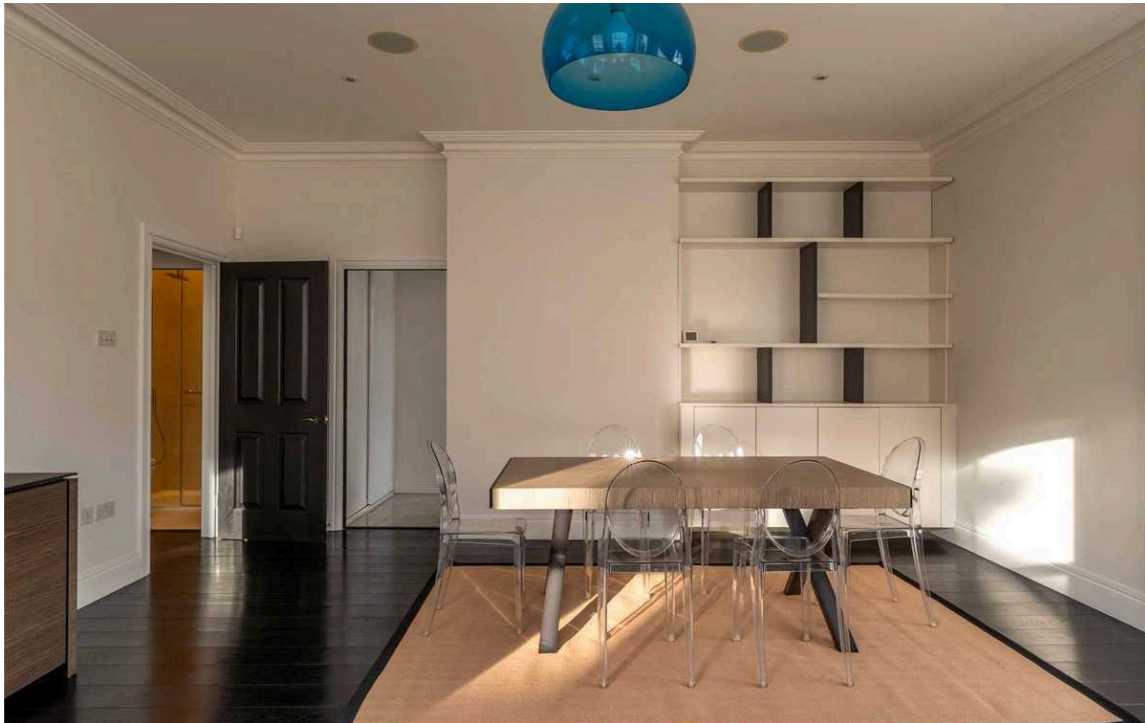
CORNWALL GARDENS
GLOUCESTER ROAD SW7

Cornwall Gardens

£1,350 P/W

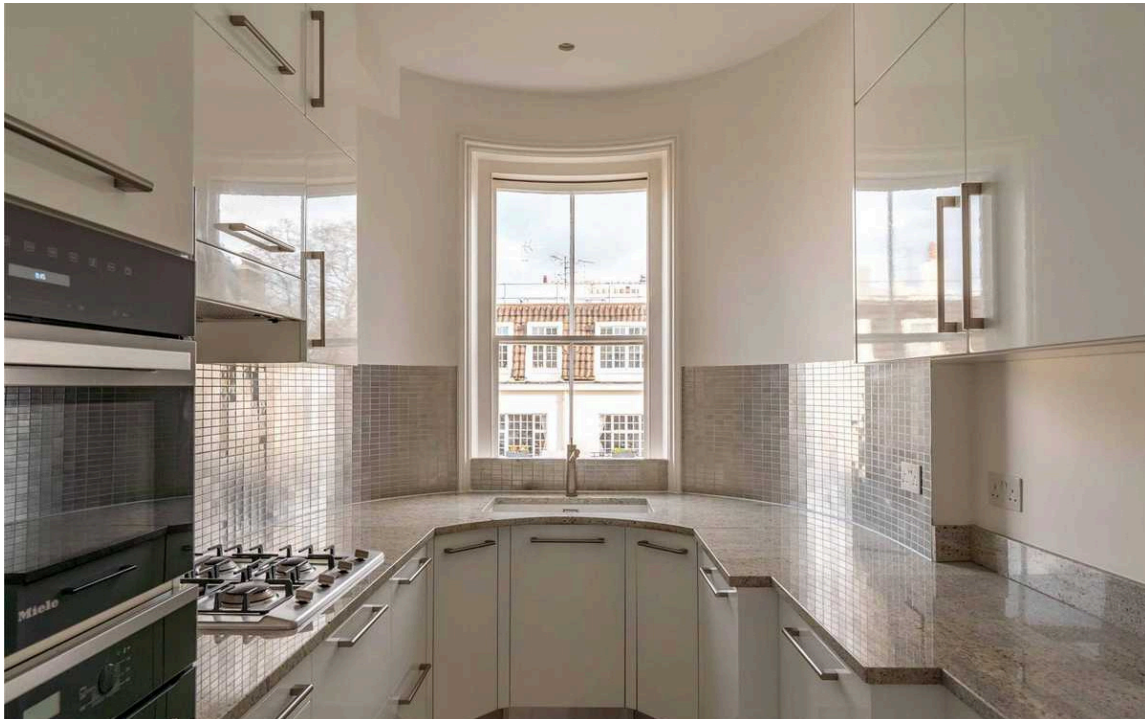
BEDROOMS 3	INTERNAL 1,125 <small>SQ FT</small>	OUTDOOR —	FURNISHED STATUS Furnished / Part Furnished
BATHROOMS 2	104 <small>SQM</small>	EPC C	COUNCIL TAX RBKC, G





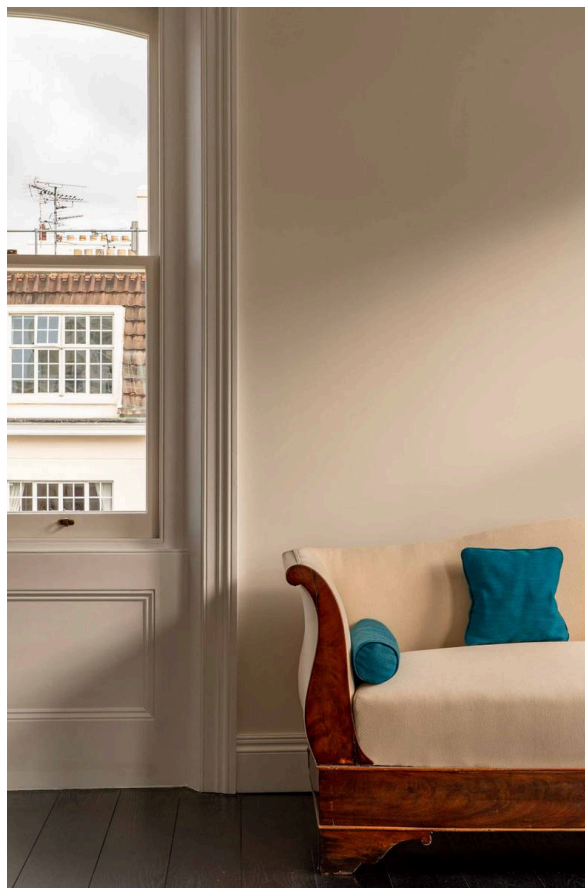
The Property

Situated on the third floor, the apartment has recently undergone a complete refurbishment and is available on a part-furnished basis.



Indoor Spaces

Comprising of a large, double-aspect reception room with a dining area, a modern kitchen with ample storage, three bedrooms, and two bathrooms, this property also comes with a live-in caretaker and benefits from a lift.



img 1

This property enjoys the warmth of winter sunlight.

The Neighbourhood

Cornwall Gardens Court is within close proximity to Kensington High Street with its large selection of shops, restaurants and cafes. The beautiful green spaces of Kensington Palace Gardens and Hyde Park are also a short walk away.

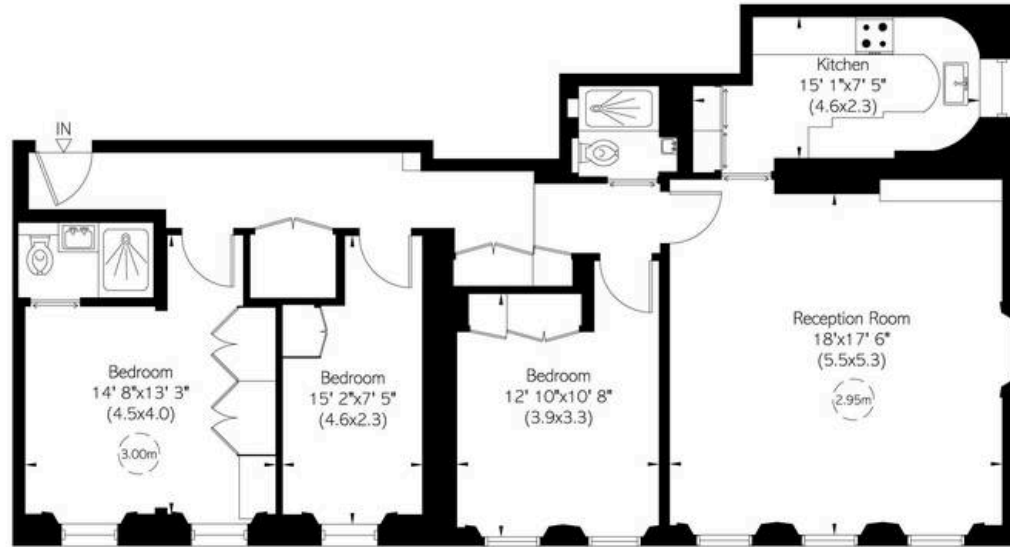
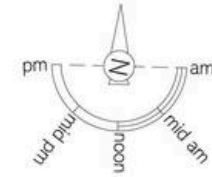


Cornwall Gardens, SW7

**RUSSELL
SIMPSON**

Approximate Internal Area
1,125 sq ft/ 104 sq m

This plan is for layout guidance only. Not drawn to scale unless stated. Windows and door openings are approximate. Whilst every care is taken in the preparation of this plan, please check all dimensions, shapes, and compass bearings before making any decisions reliant upon them.



Third Floor

**RUSSELL
SIMPSON**

Contact Us

+44 (0) 20 7225 0277

151A Sydney Street
London
SW3 6NT

chelsea@russellsimpson.co.uk